

2004  
Update



## Kenya

**EPIDEMIOLOGICAL FACT SHEETS**  
ON HIV/AIDS AND SEXUALLY TRANSMITTED INFECTIONS



Joint United Nations Programme on HIV/AIDS

**UNAIDS**

UNHCR • UNICEF • WFP • UNDP • UNFPA  
UNODC • ILO • UNESCO • WHO • WORLD BANK



World Health  
Organization

## HIV/AIDS estimates

In 2003 and during the first quarter of 2004, UNAIDS and WHO worked closely with national governments and research institutions to recalculate current estimates on people living with HIV/AIDS. These calculations are based on the previously published estimates for 1999 and 2001 and recent trends in HIV/AIDS surveillance in various populations. A methodology developed in collaboration with an international group of experts was used to calculate the new estimates on prevalence and incidence of HIV and AIDS deaths, as well as the number of children infected through mother-to-child transmission of HIV. Different approaches were used to estimate HIV prevalence in countries with low-level, concentrated or generalised epidemics. The current estimates do not claim to be an exact count of infections. Rather, they use a methodology that has thus far proved accurate in producing estimates that give a good indication of the magnitude of the epidemic in individual countries. However, these estimates are constantly being revised as countries improve their surveillance systems and collect more information.

Adults in this report are defined as women and men aged 15 to 49. This age range covers people in their most sexually active years. While the risk of HIV infection obviously continues beyond the age of 50, the vast majority of those who engage in substantial risk behaviours are likely to be infected by this age. The 15 to 49 range was used as the denominator in calculating adult HIV prevalence.

### Estimated number of adults and children living with HIV/AIDS, end of 2003

These estimates include all people with HIV infection, whether or not they have developed symptoms of AIDS, alive at the end of 2003:

Adults and children	1,200,000		
Low estimate	820,000		
High estimate	1,700,000		
Adults (15-49)	1,100,000	Adult rate (%)	6.7
Low estimate	760,000	Low estimate	4.7
High estimate	1,600,000	High estimate	9.6
Children (0-15)	100,000		
Low estimate	61,000		
High estimate	170,000		
Women (15-49)	720,000		
Low estimate	500,000		
High estimate	1,000,000		

### Estimated number of deaths due to AIDS

Estimated number of adults and children who died of AIDS during 2003:

Deaths in 2003	150,000
Low estimate	89,000
High estimate	200,000

### Estimated number of orphans

Estimated number of children who have lost their mother or father or both parents to AIDS and who were alive and under age 17 at the end of 2003:

Current living orphans	650,000
Low estimate	430,000
High estimate	930,000

## Assessment of the epidemiological situation 2004

In 2002, 34 antenatal care clinic sites participated in the HIV sentinel surveillance system. These sites were distributed all over the country and more than half of them were in rural areas. Sentinel surveillance is repeated annually, although only certain sites have been used consistently since the system was established in the late 1980s.

In 2002, the prevalence was 14.3% in urban areas and 6.3% outside urban areas. In 2002, the highest prevalence rate of 35% was reported in Suba, while in Bamba, Kalulumo and Kilifi the rate was 4%. HIV prevalence among women attending antenatal care clinics in Nairobi declined from 24.6% in 1995 to 14.7% in 1999, and to 14.4% in 2001. In Mombasa, HIV prevalence among women attending antenatal care clinics fluctuated between 12.2% and 16.3%, and was 14.2% in 2002. HIV prevalence in Kisumu has been fluctuating with the highest prevalence measured in 2000 (35.0%).

According to the population-based study in Kisumu in 1997/1998, young women were more likely to be infected than men of the same age. Among women aged 15-19 years, HIV prevalence was 23.0%, compared to 3.5% among men of the same age.

Recent DHS in 2003 found an overall prevalence of 6.7% with an increase in differences among urban (10%) versus rural residents (5.6%). As is the case in many African countries, HIV prevalence in Kenya is higher among women (8.7%), than among men 4.5%.

## UNAIDS/WHO Working Group on Global HIV/AIDS and STI Surveillance

Global Surveillance of HIV/AIDS and sexually transmitted infections (STIs) is a joint effort of WHO and UNAIDS. The UNAIDS/WHO Working Group on Global HIV/AIDS and STI Surveillance, initiated in November 1996, guides respective activities. The primary objective of the Working Group is to strengthen national, regional and global structures and networks for improved monitoring and surveillance of HIV/AIDS and STIs. For this purpose, the Working Group collaborates closely with national AIDS programmes and a number of national and international experts and institutions. The goal of this collaboration is to compile the best information available and to improve the quality of data needed for informed decision-making and planning at national, regional, and global levels. The Epidemiological Fact Sheets are one of the products of this close and fruitful collaboration across the globe.

Within this framework, the Fact Sheets collate the most recent country-specific data on HIV/AIDS prevalence and incidence, together with information on behaviours (e.g. casual sex and condom use) which can spur or stem the transmission of HIV.

Not unexpectedly, information on all of the agreed upon indicators was not available for many countries in 2003. However, these updated Fact Sheets do contain a wealth of information which allows identification of strengths in currently existing programmes and comparisons between countries and regions. The Fact Sheets may also be instrumental in identifying potential partners when planning and implementing improved surveillance systems.

The fact sheets can be only as good as information made available to the UNAIDS/WHO Working Group on Global HIV/AIDS and STI Surveillance. Therefore, the Working Group would like to encourage all programme managers as well as national and international experts to communicate additional information to them whenever such information becomes available. The Working Group also welcomes any suggestions for additional indicators or information proven to be useful in national or international decision-making and planning.

## Basic indicators

For consistency reasons the data used in the table below are taken from official UN publications.

DEMOGRAPHIC DATA	YEAR	ESTIMATE	SOURCE
Total population (thousands)	2004	32,420	UN population division database
Female population aged 15-24 (thousands)	2004	3,929	UN population division database
Population aged 15-49 (thousands)	2004	16,356	UN population division database
Annual population growth rate (%)	1992-2002	2.3	UN population division database
% of population in urban areas	2003	38.8	UN population division database
Average annual growth rate of urban population	2000-2005	4.4	UN population division database
Crude birth rate (births per 1,000 pop.)	2004	31.8	UN population division database
Crude death rate (deaths per 1,000 pop.)	2004	17.3	UN population division database
Maternal mortality rate (per 100,000 live births)	2000	1000	WHO (WHR2004)/UNICEF
Life expectancy at birth (years)	2002	50.9	World Health Report 2004, WHO
Total fertility rate	2002	4.1	World Health Report 2004, WHO
Infant mortality rate (per 1,000 live births)	2000	79	World Health Report 2004, WHO
Under 5 mortality rate (per 1,000 live births)	2000	113	World Health Report 2004, WHO

SOCIO-ECONOMIC DATA	YEAR	ESTIMATE	SOURCE
Gross national income, ppp, per capita (Int.\$)	2002	990	World Bank
Gross domestic product, per capita % growth	2001-2002	-11.2	World Bank
Per capita total expenditure on health (Int.\$)	2001	114	World Health Report 2004, WHO
General government expenditure on health as % of total expenditure on health	2001	21.4	World Health Report 2004, WHO
Total adult illiteracy rate	2000	17.6	UNESCO
Adult male illiteracy rate	2000	11.1	UNESCO
Adult female illiteracy rate	2000	24.0	UNESCO
Gross primary school enrolment ratio, male	2000/2001	95	UNESCO
Gross primary school enrolment ratio, female	2000/2001	93	UNESCO
Gross secondary school enrolment ratio, male	2000/2001	39	UNESCO
Gross secondary school enrolment ratio, female	2000/2001	36	UNESCO

### Contact address

UNAIDS/WHO Working Group on Global  
HIV/AIDS and STI Surveillance  
20, Avenue Appia  
CH - 1211 Geneva 27  
Switzerland  
Fax: +41-22-791-4834

email: [hivstrategicinfo@who.int](mailto:hivstrategicinfo@who.int) or  
[estimates@unaids.org](mailto:estimates@unaids.org)

website: <http://www.who.int/hiv>  
<http://www.unaids.org>

Extracts of the information contained in these fact sheets may be reviewed, reproduced or translated for research or private study but not for sale or for use in conjunction with commercial purposes. Any use of information in these fact sheets should be accompanied by the following acknowledgment "UNAIDS/WHO epidemiological fact sheets on HIV/AIDS and Sexually Transmitted Infections, 2004 Update".

## HIV prevalence in different populations

This section contains information about HIV prevalence in different populations. The data reported in the tables below are mainly based on the HIV database maintained by the United States Bureau of the Census where data from different sources, including national reports, scientific publications and international conferences are compiled. To provide a simple overview of the current situation and trends over time, summary data are given by population group, geographical area (Major Urban Areas versus Outside Major Urban Areas), and year of survey. Studies conducted in the same year are aggregated and the median prevalence rates (in percentages) are given for each of the categories. The maximum and minimum prevalence rates observed, as well as the total number of surveys/sentinel sites, are provided with the median, to give an overview of the diversity of HIV-prevalence results in a given population within the country. Data by sentinel site or specific study from which the medians were calculated are printed at the end of this fact sheet.

The differentiation between the two geographical areas Major Urban Areas and Outside Major Urban Areas is not based on strict criteria, such as the number of inhabitants. For most countries, Major Urban Areas were considered to be the capital city and - where applicable - other metropolitan areas with similar socio-economic patterns. The term Outside Major Urban Areas considers that most sentinel sites are not located in strictly rural areas, even if they are located in somewhat rural districts.

### HIV sentinel surveillance\*

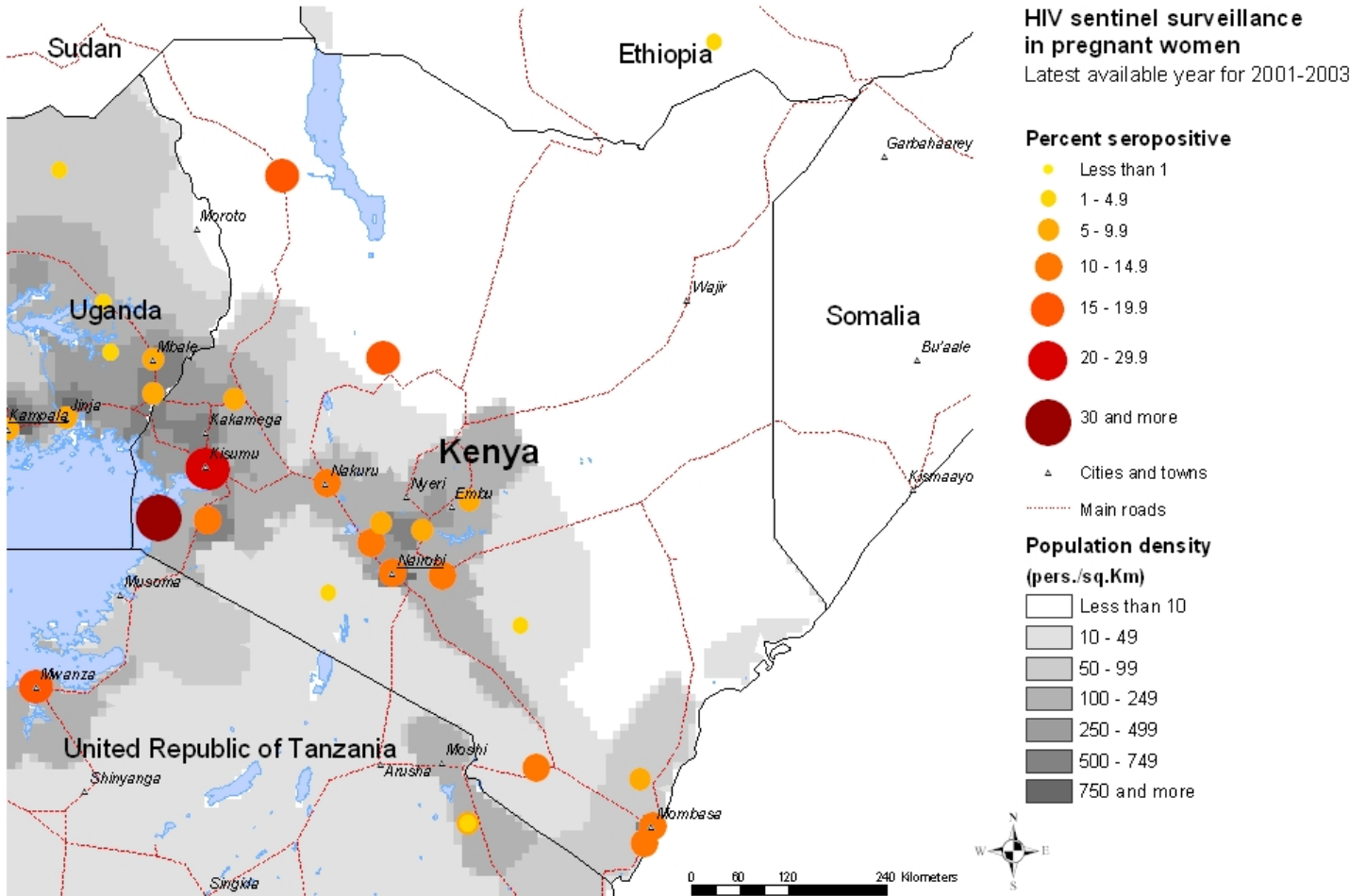
Group	Area		1987	1988	1989	1990	1991	1992	1993	1994	1995	1996	1997	1998	1999	2000	2001	2002	2003
Pregnant women	Major urban areas	N-Sites	1.00		1.00	4.00	6.00	5.00	3.00	3.00	3.00	2.00	2.00	2.00	2.00	3.00	2.00		
		Minimum	2.65		6.55	5.80	7.60	11.00	16.24	12.20	12.25	12.00	15.93	11.00	14.65	12.20	14.30		
		Median	2.65		6.55	8.30	12.57	12.89	16.50	14.84	15.65	15.05	16.67	13.65	15.67	14.98	14.35		
		Maximum	2.65		6.55	10.18	16.67	15.00	16.60	22.00	24.60	18.10	17.40	16.30	16.70	18.40	14.40		
	Outside major urban areas	N-Sites		1.00	2.00	12.00	11.00	11.00	11.00	19.00	18.00	16.00	27.00	21.00	22.00	17.00	20.00		
		Minimum		0.50	0.90	0.99	0	2.04	2.30	0	4.09	4.10	5.40	3.30	5.60	4.40	2.00		
		Median		0.50	2.02	3.21	5.63	7.86	7.50	8.90	10.46	10.75	15.90	14.70	22.70	14.40	11.57		
		Maximum		0.50	3.15	19.23	20.04	29.67	27.50	49.20	27.25	28.10	36.00	37.30	41.00	38.20	31.00		
	Sex workers	Major urban areas	N-Sites	1.00		3.00	2.00	2.00	3.00	1.00	1.00	1.00	1.00	1.00	1.00	1.00	3.00		
			Minimum	80.50		39.34	73.80	75.24	39.00	55.99	54.04	54.61	50.95	50.93	25.32	28.17	24.08		
			Median	80.50		67.23	80.78	80.58	85.49	55.99	54.04	54.61	50.95	50.93	25.32	28.17	27.00		
			Maximum	80.50		69.00	87.76	85.92	86.25	55.99	54.04	54.61	50.95	50.93	25.32	28.17	51.76		
Outside major urban areas		N-Sites												1.00					
		Minimum												74.70					
		Median												74.70					
		Maximum												74.70					
Injecting drug users		Major urban areas	N-Sites	1.00		1.00	2.00	2.00	8.00	1.00	4.00	1.00	4.00		1.00				
			Minimum	9.03		13.83	19.10	14.72	14.72	25.30	9.20	32.00	14.00		29.00				
			Median	9.03		13.83	25.61	16.72	20.64	25.30	13.30	32.00	33.68		29.00				
			Maximum	9.03		13.83	32.11	18.73	30.69	25.30	32.97	32.00	47.75		29.00				
	Outside major urban areas	N-Sites				8.00	7.00	8.00											
		Minimum				3.41	11.72	7.27											
		Median				13.13	17.02	27.16											
		Maximum				33.33	32.69	52.86											
	Men having sex with men	Major urban areas	N-Sites		1.00	1.00	1.00	1.00	1.00		3.00								
			Minimum		16.01	26.50	30.42	30.33	42.31		36.01								
			Median		16.01	26.50	30.42	30.33	42.31		43.68								
			Maximum		16.01	26.50	30.42	30.33	42.31		45.00								
Outside major urban areas		N-Sites								12.00		1.00	1.00						
		Minimum								11.76		17.00	22.00						
		Median								33.52		17.00	22.00						
		Maximum								72.73		17.00	22.00						

\*Detailed data by site can be found in the Annex.

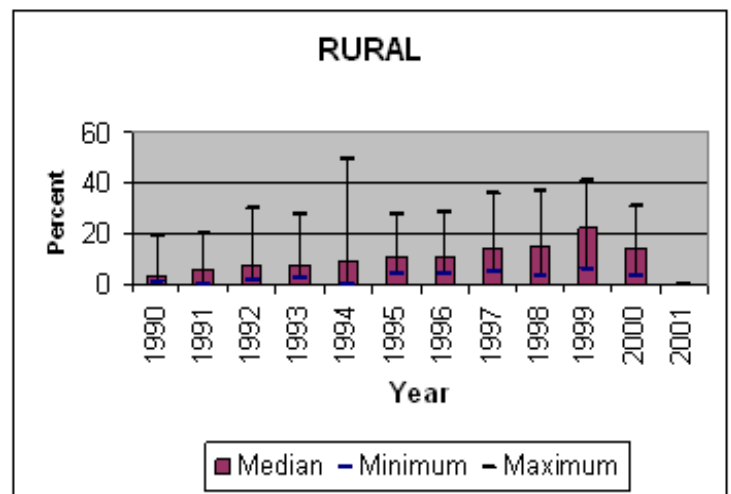
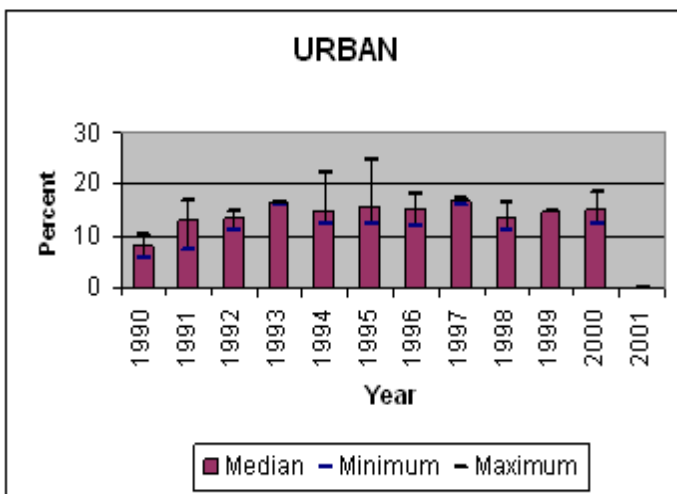
## Maps & charts

Mapping the geographical distribution of HIV prevalence among different population groups may assist in interpreting both the national coverage of the HIV surveillance system as well in explaining differences in levels of prevalence. The UNAIDS/WHO Working Group on Global HIV/AIDS and STI Surveillance, in collaboration with the WHO Public Health Mapping Team, Communicable Diseases, is producing maps showing the location and HIV prevalence in relation to population density, major urban areas and communication routes. For generalized epidemics, these maps show the location of prevalence of antenatal surveillance sites.

Trends in antenatal sentinel surveillance for higher prevalence countries, or in prevalence among selected populations for countries with concentrated epidemics, are a new addition. These are presented for those countries where sufficient data exist.



### Trends in HIV prevalence among antenatal clinic attendees



Median prevalence and ranges are shown in areas with more than one sentinel site.

The boundaries and names shown and the designations used on the map do not imply the expression of any opinion whatsoever on the part of the World Health Organization concerning the legal status of any country, territory, city or area or of its authorities, or concerning the delimitation of its frontiers or boundaries. Dotted lines on maps represent approximate border lines for which there may not yet be full agreement. WHO 2004, all rights reserved.

## Reported AIDS cases

Following WHO and UNAIDS recommendations, AIDS case reporting is carried out in most countries. Data from individual AIDS cases are aggregated at the national level and sent to WHO. However, case reports come from surveillance systems of varying quality. Reporting rates vary substantially from country to country and low reporting rates are common in developing countries due to weaknesses in the health care and epidemiological systems. In addition, countries use different AIDS case definitions. A main disadvantage of AIDS case reporting is that it only provides information on transmission patterns and levels of infection approximately 5-10 years in the past, limiting its usefulness for monitoring recent HIV infections.

Despite these caveats, AIDS case reporting remains an important advocacy tool and is useful in estimating the burden of HIV-related morbidity as well as for short-term planning of health care services. AIDS case reports also provide information on the demographic and geographic characteristics of the affected population and on the relative importance of the various exposure risks. In some situations, AIDS reports can be used to estimate earlier HIV infection patterns using back-calculation. AIDS case reports and AIDS deaths have been dramatically reduced in industrialized countries with the introduction of Anti-Retroviral Therapy (ART).

1979	1980	1981	1982	1983	1984	1985	1986	1987	1988	1989	1990	1991	1992	1993	1994	1995	1996	1997	1998
0	0	0	0	0	0	0	1	1299	2429	4749	7672	9554	11569	12204	8588	9133	6844	4885	2565
1999	2000	2001	2002	2003	Total		UNK	Date of last report											
					81492			9/28/1998											

## Curable sexually transmitted infections (STIs)

The predominant mode of transmission of both HIV and other STIs is sexual intercourse. Measures for preventing sexual transmission of HIV and STIs are the same, as are the target audiences for interventions. In addition, strong evidence supports several biological mechanisms through which STIs facilitate HIV transmission by increasing both HIV infectiousness and HIV susceptibility. Thus, detection and treatment of individuals with STIs is an important part of an HIV control strategy. In summary, if the incidence/prevalence of STIs is high in a country, then there is the possibility of high rates of sexual transmission of HIV. Monitoring trends in STIs provides valuable insight into the likelihood of the importance of sexual transmission of HIV within a country, and is part of second generation surveillance. These trends also assist in assessing the impact of behavioural interventions, such as delaying sexual debut, reducing the number of sex partners and promoting condom use.

Clinical services offering STI care are an important access point for people at high risk for both STIs and HIV. Identifying people with STIs allows for not only the benefit of treating the STI, but for prevention education, HIV testing, identifying HIV-infected persons in need of care, and partner notification for STIs or HIV infection. Consequently, monitoring different components of STI prevention and control can also provide information on HIV prevention and control activities within a country.

### STI syndromes

Reported cases	1996	1997	1998	1999	2000	2001	2002	2003	Incidence 2003
----------------	------	------	------	------	------	------	------	------	----------------

Comments:

Source:

### Syphilis prevalence, women

Percent of blood samples taken from pregnant women aged 15-49 that test positive for syphilis - positive reaginic and treponemal test-during routine screening at selected antenatal clinics.

Year	Area	Rate	Range
2000-2001	Not specified	1.65	1.6-1.7

Comments:

Source: Moses S. Declining Sexually Transmitted Disease and HIV prevalences among antenatal clinic (ANC) attenders in Nairobi, Kenya, from 1992-2001. Available at: <http://www.pulsus.com/cahr2002/abs/abs337P.htm>

### Estimated prevalence of curable STIs among female sex workers

#### - Chlamydia

Year	Area	Rate	Range
1997-1999	Urban	5.35	2.7-9

Comments:

Source: 1) Morison L. Commercial sex and the spread of HIV in four cities in sub-Saharan Africa. AIDS. 2001 Aug;15 Suppl 4:S61-9. 2) Fonck K. A randomized, placebo-controlled trial of monthly azithromycin prophylaxis to prevent sexually transmitted infections and HIV-1 in Kenyan sex workers: study design and baseline findings. Int J STD AIDS. 2000 Dec;11(12):804-11. 3) Martin HL. Hormonal contraception, sexually transmitted diseases, and risk of heterosexual transmission of human immunodeficiency virus type 1. J Infect Dis. 1998 Oct;178(4):1053-9. 4) Fonck K. Sexually transmitted infections and vaginal douching in a population of female sex workers in Nairobi, Kenya. Sex Transm Infect. 2001 Aug;77(4):271-5.

#### - Gonorrhoea

Year	Area	Rate	Range
1997-1999	Urban	7.05	4.3-10
2000-2001	Not specified	1.8	

Comments:

Source: 1) Morison L. Commercial sex and the spread of HIV in four cities in sub-Saharan Africa. AIDS. 2001 Aug;15 Suppl 4:S61-9. 2) Fonck K. A randomized, placebo-controlled trial of monthly azithromycin prophylaxis to prevent sexually transmitted infections and HIV-1 in Kenyan sex workers: study design and baseline findings. Int J STD AIDS. 2000 Dec;11(12):804-11. 3) Martin HL. Hormonal contraception, sexually transmitted diseases, and risk of heterosexual transmission of human immunodeficiency virus type 1. J Infect Dis. 1998 Oct;178(4):1053-9. 4) Fonck K. Sexually transmitted infections and vaginal douching in a population of female sex workers in Nairobi, Kenya. Sex Transm Infect. 2001 Aug;77(4):271-5.

Estimated prevalence of curable STIs among female sex workers (continued)**- Syphilis**

Year	Area	Rate	Range
2000-2001	Urban	12.2	
1997-1999	Urban	6.2	6-11

**Comments:**

**Source:** Richardson BA. Evaluation of a Low-Dose Nonoxynol-9 Gel for the Prevention of Sexually Transmitted Diseases. Sex Trans Dis 2001; 28 (7): 394-400.

**- Trichomoniasis**

Year	Area	Rate	Range
1997-1999	Urban	13.95	7-16

**Comments:**

**Source:** 1) Morison L. Commercial sex and the spread of HIV in four cities in sub-Saharan Africa. AIDS. 2001 Aug;15 Suppl 4:S61-9. 2) Fonck K. A randomized, placebo-controlled trial of monthly azithromycin prophylaxis to prevent sexually transmitted infections and HIV-1 in Kenyan sex workers: study design and baseline findings. Int J STD AIDS. 2000 Dec;11(12):804-11. 3) Martin HL. Hormonal contraception, sexually transmitted diseases, and risk of heterosexual transmission of human immunodeficiency virus type 1. J Infect Dis. 1998 Oct;178(4):1053-9. 4) Fonck K. Sexually transmitted infections and vaginal douching in a population of female sex workers in Nairobi, Kenya. Sex Transm Infect. 2001 Aug;77(4):271-5.



## Health service and care indicators

HIV prevention strategies depend on the twin efforts of care and support for those living with HIV or AIDS, and targeted prevention for all people at risk or vulnerable to the infection. It is difficult to capture such a large range of activities with one or just a few indicators. However, a set of well-established health care indicators may help to identify general strengths and weaknesses of health systems. Specific indicators, such as access to testing and blood screening for HIV, help to measure the capacity of health services to respond to HIV/AIDS - related issues.

### Access to health care

Indicators	Year	Estimate	Source
% of population with access to health services - total			
% of population with access to health services - urban			
% of population with access to health services - rural			
Contraceptive prevalence rate (%)	1998	39	UNICEF/UNPOP
Percentage of contraceptive users using condoms			
% of births attended by skilled health personnel	2000	44.3	WHO
% of 1-yr-old children fully immunized - DPT	2002	84	WHO/UNICEF
% of 1-yr-old children fully immunized - Measles	2001	78	WHO/UNICEF
% of ANC clinics where HIV testing is available			

### Number of adults (15-49) with advanced HIV infection receiving ARV therapy as of June 2004

#### Adults on treatment

Number: 11,000

Source: WHO

### Estimated number of adults (15-49) in need of treatment in 2003

#### Adults needing treatment

Number: 220,000

Source: WHO/UNAIDS

### Coverage of HIV testing and counselling

Number of public and NGO services providing testing and counselling services.

Year	Area	N=
2003	All	304

#### Comments:

Source: Ministry of Health

## Knowledge and behaviour

In most countries the HIV epidemic is driven by behaviours (e.g.: multiple sexual partners, injecting drug use) that expose individuals to the risk of infection. Information on knowledge and on the level and intensity of risk behaviour related to HIV/AIDS is essential in identifying populations most at risk for HIV infection and in better understanding the dynamics of the epidemic. It is also critical information in assessing changes over time as a result of prevention efforts. One of the main goals of the 2nd generation HIV surveillance systems is the promotion of a standard set of indicators defined in the National Guide (Source: National AIDS Programmes, A Guide to Monitoring and Evaluation, UNAIDS/00.17) and regular behavioural surveys in order to monitor trends in behaviours and to target interventions.

The indicators on knowledge and misconceptions are an important prerequisite for prevention programmes to focus on increasing people's knowledge about sexual transmission, and, to overcome the misconceptions that act as a disincentive to behaviour change. Indicators on sexual behaviour and the promotion of safer sexual behaviour are at the core of AIDS programmes, particularly with young people who are not yet sexually active or are embarking on their sexual lives, and who are more amenable to behavioural change than adults. Finally, higher risk male-male sex reports on unprotected anal intercourse, the highest risk behaviour for HIV among men who have sex with men.

### Knowledge of HIV prevention methods

Prevention indicator: Percentage of young people 15-24 who both correctly identify two ways of preventing the sexual transmission of HIV and who reject three misconceptions about HIV transmission.

Year	Male	Female
2000		26

**Comments:**

**Source:** MICS

### Reported condom use at last higher risk sex (young people 15-24)

Prevention indicator: Proportion of young people reporting the use of a condom during sex with a non-regular partner.

Year	Male	Female
1998	43	14

**Comments:**

**Source:** DHS

### Age-mixing in sexual partnerships among young women

The proportion of young women who have had sex in the last 12 months with a partner who is 10 or more years older than themselves.

Year	Area	Age group	Male	Female	All
------	------	-----------	------	--------	-----

**Comments:**

**Source:**

### Reported non-regular sexual partnerships

Prevention indicator: Proportion of young people 15-24 having at least one sex partner other than a regular partner in the last 12 months.

Year	Male	Female
1998	92	39

**Comments:**

**Source:** DHS

Knowledge and behaviour (continued)Ever used a condom

Percentage of people who ever used a condom.

Year	Area	Age group	Male	Female	All
------	------	-----------	------	--------	-----

Comments:

Source:

Adolescent pregnancy

Percentage of teenagers 15-19 who are mothers or pregnant with their first child.

Year	Percentage
------	------------

Comments:

Source:

Age at first sexual experience

Proportion of 15-19 year olds who have had sex before age 15.

Year	Male	Female
1998	32	15

Comments:

Source: DHS

## Prevention indicators

Male and female condoms are the only technology available that can prevent sexual transmission of HIV and other STIs. Persons exposing themselves to the risk of sexual transmission of HIV should have consistent access to high quality condoms. AIDS Programs implement activities to increase both availability of and access to condoms. These activities should be monitored and have resources directed to problem areas. The indicator below highlights the availability of condoms. However, even if condoms are widely available, this does not mean that individuals can or do access them.

### Condom availability nationwide

Total number of condoms available for distribution nationwide during the preceding 12 months, divided by the total population aged 15-49.

Year	N	Rate
------	---	------

Comments:

Source:

### Prevention of mother-to-child transmission (MTCT) nationwide

Percentage of women who were counselled during antenatal care for their most recent pregnancy, accepted an offer of testing and received their test results, of all women who were pregnant at any time in the preceding two years.

Year	N	Rate
------	---	------

Comments:

Source:

Blood safety programs aim to ensure that the majority of blood units are screened for HIV and other infectious agents. This indicator gives an idea of the overall percentage of blood units that have been screened to high enough standards that they can confidently be declared free of HIV.

### Screening of blood transfusions nationwide

Percentage of blood units transfused in the last 12 months that have been adequately screened for HIV according to national or WHO guidelines.

Year	N	Rate
------	---	------

Comments:

Source:

## Sources

Data presented in this Epidemiological Fact Sheet come from several sources, including global, regional and country reports, published documents and articles, posters and presentations at international conferences, and estimates produced by UNAIDS, WHO and other United Nations agencies. This section contains a list of the more relevant sources used for the preparation of the Fact Sheet. Where available, it also lists selected national Web sites where additional information on HIV/AIDS and STI are presented and regularly updated. However, UNAIDS and WHO do not warrant that the information in these sites is complete and correct and shall not be liable whatsoever for any damages incurred as a result of their use.

Ayisi, J. G., A. M. Van Eijk, F. O. Ter Kuile, et al. 2000 Risk Factors for HIV Infection among Asymptomatic Pregnant Women Attending an Antenatal Clinic in Western Kenya *International Journal of STD and AIDS*, vol. 11, no. 6, pp. 393-401.

Brun-Vezinet, F. 1985 Seroepidemiological Studies of LAV in Central Africa *International Symposium on African AIDS*, 11/22-23, Abstract.

Bwayo J. J., M. Otido, D. Oduor, et al. 1992 Regular Clients of Female Sex Workers: Condom Use and Risk of HIV-1 Infection VIII International Conference on AIDS, Amsterdam, 7/19-24, Poster PoC 4182.

Brindle, R. J., P. P. Nunn, W. Githui, et al. 1993 Quantitative Bacillary Response to Treatment in HIV-Associated Pulmonary Tuberculosis *American Review of Respiratory Disease*, vol. 147, no. 4, pp. 958-961.

Bukusi, E., C. Stevens, C. Cohen, et al. 1995 Acute Pelvic Inflammatory Disease at an Outpatient Clinic in Nairobi: Impact of HIV IX International Conference on AIDS and STD in Africa, Kampala, Uganda, 12/10-14, Poster MoB457.

Baltazar, G., T. M. Okeyo, J. Stover, et al. 1996 AIDS in Kenya -- Background - Projections - Impact - Interventions Ministry of Health, NASCOP, NCPD, Third Edition, Kenya, unpublished report.

Bukusi, E., C. Stevens, C. Cohen, et al. 1996 Impact of HIV on Acute Pelvic Inflammatory Disease in a Nairobi Outpatient Clinic XI International Conference on AIDS, Vancouver, 7/7-14, Abstract Mo.C.1618.

Bashir, F., T. Verstraeten, P. Mutuku, et al. 1997 Results of Two Consecutive Surveillance Studies in Kajiado: a Rural Kenyan District Xth International Conference on AIDS and STD in Africa Abidjan, Cote d'Ivoire, 12/7-11, Poster B.682.

Buve, A., M. Carael, R.J. Hayes, et al. 2001 Multicentre Study on Factors Determining Differences in Rate of Spread of HIV in Sub-Saharan Africa: Methods and Prevalence ... *AIDS*, vol. 15, supp. 4, pp. S5-S14.

Baeten, J. M., B. A. Richardson, H. L. Martin Jr., et al. 2000 Trends in HIV-1 Incidence in a Cohort of Prostitutes in Kenya: Implications for HIV-1 Vaccine Efficacy Trials *Journal of Acquired Immune Deficiency Syndromes*, vol. 24, no. 5, pp. 458-464.

Cameron, D. W., F. A. Plummer, J. N. Simonsen, et al. 1987 Female to Male Heterosexual Transmission of HIV Infection in Nairobi III International Conference on AIDS, Washington, D.C., 6/1-5, Abstract MP.91.

Cohen, C., Sinei, S., M. Reilly, et al. 1996 HIV and Acute Pelvic Inflammatory Disease: A Laparoscopic Study in Kenya XI International Conference on AIDS, Vancouver, 7/7-14, Abstract Th.B.113.

Chohan, B., L. Lavreys, K. Mandaliya, et al. 2000 Detection of HIV-1 IgG Antibodies in Saliva Using the Omnisal Saliva Collection Device (Trade Mark) and a Single Enzyme ... X III International AIDS Conference, Durban, South Africa, 7/9-14, Abstract MoPeA2093.

Fonck, K., R. Kaul, J. Kimani, et al. 2000 STI and Vaginal Douching in a Population of Sex Workers in Nairobi, Kenya XIII International AIDS Conference, Durban, South Africa, 7/9-14, Abstract TuPeC3414.

Farquhar, C., D. Mbori-Ngacha, R. Bosire, et al. 2000 Prevalence and Correlates of Partner Notification Regarding HIV-1 in an Antenatal Setting in Nairobi, Kenya XIII International AIDS Conference, Durban, South Africa, 7/9-14, Abstract TuOrC307.

Fonck, K., R. Kaul, J. Kimani, et al. 2000 A Randomized, Placebo-Controlled Trial of Monthly Azithromycin Prophylaxis to Prevent Sexually Transmitted Infections and ... *International Journal of STD and AIDS*, vol. 11, no. 12, pp. 804-811.

Farquhar, C., D. A. Mbori-Ngacha, R. K. Bosire, et al. 2001 Partner Notification by HIV-1 Seropositive Pregnant Women: Association with Infant Feeding Decisions *AIDS*, vol. 15, no. 6, pp. 815-817.

Greenblatt, R. M., S. A. Lukehart, F. A. Plummer, et al. 1988 Genital Ulceration as a Risk Factor for Human Immunodeficiency Virus Infection *AIDS*, vol. 2, no. 1, pp. 47-50.

Gichangi, P., M. Temmerman, A. F. Mohamed, et al. 1992 Rapid Increase in HIV-1 Infection and Syphilis between 1989 and 1991 in Pregnant Women in Nairobi, Kenya VIII International Conference on AIDS, Amsterdam, 7/19-24, Poster PoC 4029.

Gathigi, H. W., J. Bwayo, P. M. Karuga, et al. 1993 The Socio-Economic Status of Prostitutes at a Truck Drivers' Stop and Their Interaction with Male Clients IX International Conference on AIDS, Berlin, 6/6-11, Poster PO-D09-3672.

Gichangi, P. B., J. Ndinya-Achola, L. Haller, et al. 1996 HIV-1 Infection and Cefetamet-Pivoxil Use among Antenatal Clinic Attenders in Nairobi, Kenya XI International Conference on AIDS, Vancouver, 7/7-14, Poster Tu.C.2688.

Glynn, J. R., A. Buve, M. Carael, et al. 2000 Decreased Fertility among HIV-1-Infected Women Attending Antenatal Clinics in Three African Cities *Journal of Acquired Immune Deficiency Syndromes*, vol. 25, no. 4, pp. 345-352.

Gichangi, P. B., K. Fonck, C. Sekande-Kingondu, et al. 2000 Partner Notification of Pregnant Women Infected with Syphilis in Nairobi, Kenya XIII International AIDS Conference, Durban, South Africa, 7/9-14, Abstract MoPeB2230.

Johns Hopkins University 1986 AIDS -- A Public Health Crisis Population Information Program, Population Reports, Issues in World Health, July-Aug., Series L, no. 6, pp. 194-228.

- Johnston, A. G. 1998 HIV Sentinel Surveillance Data for Kenya Center for International Development, Research Triangle Institute, FAX, tables.
- Jackson, D. J., E. N. Njugi, F. A. Plummer, et al. 1999 Stable Antenatal HIV-1 Seroprevalence with High Population Mobility and Marked Seroprevalence Variation among Sentinel Sites .. AIDS, vol. 13, no. 5, pp. 583-589.
- Kreiss, J. K., M. Braddiek, F. A. Plummer, et al. 1987 Congential Transmission of HIV in Nairobi, Kenya II International Symposium: AIDS and Associated Cancers in Africa, Naples, Italy, 10/7-9, Abstract S.9.2.
- Kreiss, J., N. Kiviat, F. Plummer, et al. 1989 HIV, Human Papillomavirus, and Cervical Dysplasia in Nairobi Prostitutes V International Conference on AIDS, Montreal, 6/4-9, Poster M.B.P. 53.
- Kibuga, D. K., S. N. Gathua, P. Nunn 1989 A Study of HIV Infection in Association with Tuberculosis Patients Seen in Infectious Diseases Hospital (IDH) Nairobi V International Conference on AIDS, Montreal, 6/4-9, Abstract Th.G.O. 5.
- Kitabu, M. Z., G. M. Maitha, J. N. Mungai, et al. 1992 Trends and Seroprevalence of HIV amongst Four Population Groups in Nairobi in the Period 1989 to 1991 VIII International Conference on AIDS, Amsterdam, 7/19-24, Poster PoC 4018.
- Kimani, J., I. Mclean, G. Maitha, et al. 1992 An Activated Charcoal Medium in the Primary Isolation of H. Ducreyi VII International Conference on AIDS in Africa, Yaounde, Cameroon, 12/8-11, Abstract W.P.197.
- Kivihya-Ndugga, L. E., J. J. Ochola, G. Otieno, et al. 1994 Clinical and Immunological Markers in Kenyan Pulmonary Tuberculosis Patients with and Without HIV-1 East African Medical Journal, vol. 71, no. 6, pp. 373-375.
- Kenya Ministry of Health 2001 AIDS in Kenya: Background, Projections, Impact, Interventions and Policy Republic of Kenya, Ministry of Health, 6th edition, Nairobi: National AIDS and STD Control, report.
- Loolpait, P. M., A. Nyangao, F. Dikir, et al. 1993 Human Immunodeficiency Virus (HIV) and Syphilis Antibody Serostatus of Antenatals in a Typically Rural Community in Kajiado . . . VIII International Conference on AIDS in Africa, Marrakech, Morocco, 12/12-16, Abstract Th.P.C.092.
- Mougua, G., G. S. Gachihi, S. Adaw, et al. 1989 HIV Seroprevalence Survey among High Risk Females at Mombasa, Kenya V International Conference on AIDS, Montreal, 6/4-9, Poster W.G.P. 27.
- Maitha, G. M., J. M. Simwa, F. A. Plummer 1990 HIV Seroprevalence among High Risk and Low Risk Groups in Nairobi during the Period May 1989 Through May 1990 V International Conference: AIDS in Africa, Kinshasa, Zaire, Oct. 10-12, Poster T.P.E.20.
- Mbugua, G. G., L. N. Muthami, J. M. Kimata, et al. 1991 Rising Trends of HIV Infection among Antenatal Mothers in a Kenyan Rural Area VII International Conference on AIDS, Florence, Italy, 6/16-21, Poster W.C.3283.
- Mungai, J. N., G. M. Maitha, M. Z. Kitabu, et al. 1992 Prevalence of HIV and Other STD's in Three Populations in Nairobi for Year 1991 VIII International Conference on AIDS, Amsterdam, 7/19-24, Poster PoC 4714.
- Mungai, J. N., J. Ombette, J. Kimani, et al. 1992 Laboratory Findings for the Prevalence of HIV, Neisseria Gonorrhoea and Chlamydia Trachomatis Infections among Prostitutes . . . VII International Conference on AIDS in Africa, Yaounde, Cameroon, 12/8-11, Abstract W.P.189.
- Malonza, I. M., F. Keli, R. Kaul, et al. 1999 Sexually Transmitted Diseases and HIV among Female Sex Workers in Nairobi, Kenya XI International Conference on AIDS and STDs in Africa, Lusaka, Zambia, 9/12-16, Abstract 15DT3-3.
- Malonza, I., F. Keli, R. Kaul, et al. 2000 Asymptomatic STDs and HIV among Female Sex Workers in Nairobi, Kenya XIII International AIDS Conference, Durban, South Africa, 7/9-14, Abstract WePeC4365.
- Marum, L. H., B. Chelugot, L. Mwikya, et al. 2002 Estimating Rural Seroprevalence Using Rural Sites and Women's Residence in Sentinel Surveillance for HIV-1 in Kenya XIV International AIDS Conference, Barcelona, Spain, 7/7-12, Poster TuPpC2056.
- Nunn, P. P., S. Gathua, D. Kibuga, et al. 1989 HIV Seroprevalence Survey of Tuberculosis Patients at Infectious Diseases Hospital, Nairobi, Kenya IV Internat. Conf.: AIDS and Assoc. Cancers in Africa, Marseille, Oct. 18-20, Poster 190.
- Ndinya-Achola, J. O., A. E. Ghee, K. K. Holmes, et al. 1993 Gender-Specific Sexual Behaviors among STD Patients at a Nairobi Primary Health Care Clinic IX International Conference on AIDS, Berlin, 6/6-11, Poster PO-D01-3406.
- Nasio, J. M., F. A. Plummer, S. Moses, et al. 1993 Determinants of Condom Use among Heterosexual Men with Sexually Transmitted Diseases (STD) and HIV IX International Conference on AIDS, Berlin, 6/6-11, Abstract PO-D10-3679.
- Ndinya-Achola, J. O., A. N. Kihara, L. D. Fisher, et al. 1994 Clinical Etiologic Diagnosis of Genital Discharge in Males Tenth International Conference on AIDS, Yokohama, Japan, 8/7-12, Abstract 179B.
- Nasio, J. M., N. J. D. Nagelkerke, A. Mwatha, et al. 1996 Genital Ulcer Disease among STD Clinic Attenders in Nairobi: Association with HIV-1 and Circumcision Status International Journal of STD and AIDS, vol. 7, pp. 410-414.
- National AIDS Control Programme of Kenya, Ministry of Health . . 1994 AIDS in Kenya -- Background - Projections - Impact - Interventions Nairobi, Kenya.
- Nunn, P., K. Wasunna, G. Kwanyah, et al. 1990 Cohort Study of HIV Infected Tuberculosis Patients, Nairobi, Kenya: Data at Presentation and Mortality VI International Conference on AIDS, San Francisco, 6/20-21, Abstract Th.B.486.
- NCPD 1993 Technical Session on Epidemiology of HIV/AIDS: 25 January 1993 World Health Organization.
- Ndinya-Achola, J. O., A. E. Ghee, A. N. Kihara, et al. 1997 High HIV Prevalence, Low Condom Use and Gender Differences in Sexual Behaviour among Patients with STD-Related Complaints . . . International Journal of STD and AIDS, vol. 8, no. 8, pp. 506-514.
- National AIDS and STDs Control Programme 1999 Estimating National HIV Prevalence in Kenya from Sentinel Surveillance Data The National AIDS and STDs Control Programme, Nairobi, Kenya, June, report.

National AIDS and STDs Control Programme 2000 Estimating National HIV Prevalence in Kenya from Sentinel Surveillance Data The National AIDS and STDs Control Programme, Nairobi, Kenya, June, report.

Ombette, J., J. Bwayo, G. Maitha, et al. 1993 Sexually Transmitted Diseases (STD) and HIV-1 among Prostitutes and Their Regular Male Clients in Nairobi Kenya IX International Conference on AIDS, Berlin, 6/6-11, Abstract PO-A36-0844.

Owino, E. A., S. O. McLigeyo, S. N. Gathua, et al. 1996 Prevalence of Human Immunodeficiency Virus Infection: Its Impact on the Diagnostic Yields in Exudative Pleural Effusions . . . East African Medical Journal, vol. 73, no. 9, pp. 575-578.

Piot, P., F. A. Plummer, M. A. Rey, et al. 1987 Retrospective Seroepidemiology of AIDS Virus Infection in Nairobi Populations Journal of Infectious Diseases, vol. 155, no. 6, pp. 1108-1112.

Plourde, P. J., F. A. Plummer, J. Pepin, et al. 1992 Human Immunodeficiency Virus Type 1 Infection in Women Attending a Sexually Transmitted Diseases Clinic in Kenya Journal of Infectious Diseases, vol. 166, no. 1, pp. 86-92.

Pattullo, A. L. S., J. M. Nasio, J. O. Ndinya-Achola, et al. 1992 Women with Genital Ulcers often Continue Sexual Activity Prior to Receiving Curative Therapy VIII International Conference on AIDS, Amsterdam, 7/19-24, Abstract PoC 4365.

Rao, I. R. P. 1995 Safe Sex Operational Model: a Tool for Planning and Monitoring Safe Sex Activities in Developing Countries IUVDT World STD/AIDS Congress, Singapore, 3/19-23, Special Session.

Simonsen, J. N., F. A. Plummer, E. N. Ngugi, et al. 1990 HIV Infection among Lower Socioeconomic Strata Prostitutes in Nairobi AIDS, vol. 4, no. 2, pp. 139-144.

Simonsen, J. N., W. Cameron, M. N. Gakinya, et al. 1988 Human Immunodeficiency Virus Infection among Men with Sexually Transmitted Diseases New England Journal of Medicine, vol. 319, no. 5, pp. 274-278.

Smith, N. H., L. Njema, R. Mwangi, et al. 2002 Are Voluntary Counseling and Testing Effective for Identifying HIV-Infected Pregnant Women? XIV International AIDS Conference, Barcelona, Spain, 7/7-12, Abstract TuPeF5388.

Tyndall, M., P. Odhiambo, A. R. Ronald, et al. 1991 The Increasing Seroprevalence of HIV-1 in Males with Other STD's in Nairobi, Kenya VII International Conference on AIDS, Florence, Italy, 6/16-21, Poster W.C.3117.

Temmerman, M., F. M. Ali, J. O. Ndinya-Achola, et al. 1991 Rapid Increase of both HIV-1 and Syphilis among Pregnant Women in Nairobi, Kenya AIDS, vol. 6, no. 10, pp. 1181-1185.

Temmerman, M., F. Jenniskens, M. A. Malisa, et al. 1992 Prevalence Rates of STDs in Women at the STD Referral Clinic and at a MCH Clinic in Nairobi, Kenya VII International Conference on AIDS in Africa, Yaounde, Cameroon, 12/8-11, Poster W.P.198.

Temmerman, M., J. Ndinya-Achola, J. Ambani, et al. 1995 The Right Not to Know HIV-Test Results Lancet, vol. 345, no. 8955, pp. 969-970.

Taelman, H., M. Tyndall, P. Gichangi, et al. 1996 Acute Urethritis among Men in Nairobi, Kenya: Etiologic Diagnosis, Syndromic Treatment and Association with HIV-1 XI International Conference on AIDS, Vancouver, 7/7-14, Abstract Th.B.112.

Tyndall, M. W., N. Kidula, J. Sande, et al. 1997 Behavioural and Social Predictors of HIV-1 Infection in Women: A Comparison of Two Clinics in Nairobi, Kenya Xth International Conference on AIDS and STD in Africa Abidjan, Cote d' Ivoire, 12/7-11, Abstract B.468.

Tyndall, M. W., N. Kidula, J. Sande, et al. 1998 Vulnerability to HIV among Disadvantaged Women in Kenya: Implications for Interventions 12th World AIDS Conference, Geneva, 6/28 - 7/3, Abstract 23449.

Torrens, J. K. 2000 HIV and Tuberculosis in a Rural Hospital in Kenya East African Medical Journal, vol. 77, no. 4, pp. 185-188.

Temmerman, M., P. Gichangi, K. Fonck, et al. 2000 Effect of a Syphilis Control Programme on Pregnancy Outcome in Nairobi, Kenya Sexually Transmitted Infection 2000, vol. 76, pp. 117-121.

Tyndall, M. W., A. R. Ronald, E. Agoki, et al. 1996 Increased Risk of Infection with Human Immunodeficiency Virus Type 1 among Uncircumcised Men Presenting with Genital Ulcer ... Clinical Infectious Diseases, vol. 23, pp. 449-453.

Van Gorkom, J., D. Kibuga, S. Adallah, et al. 1999 HIV Sero-Prevalence among Tuberculosis Patients in Kenya East African Medical Journal, vol. 76, no. 8, pp. 452-456.

Van Eijk, A. M., J. G. Ayisi, F. O. Ter Kuile, et al. 2001 Human Immunodeficiency Virus Increases the Risk of Malaria in Women of All Gravities in Kisumu, Kenya Presented at the 50th Annual Meeting of the American Society of Tropical Medicine and Hygiene, Atlanta, Georgia, 2001, Abstract in the American Society of Trop. Med. & Hyg., vol. 65, no. 3, Abstract 740, pg. 405.

Weekly Review, The 1989 International Conference Focuses on AIDS Joint Publication Research Service: Epidemiology, April 28, no. 008, pp. 1-2.

Wambugu, P., F. A. Plummer, R. C. Brunham, et al. 1991 Are Sexually Transmitted Diseases (STD) Opportunistic Infections in HIV-1 Infected Women? VII International Conference on AIDS, Florence, Italy, 6/16-21, Poster M.C.3061.

Wanjala, P., M. W. Tyndall, E. Agoki, et al. 1992 Health Seeking Behaviour of Men with Genital Ulcer Disease in Nairobi VIII International Conference on AIDS, Amsterdam, 7/19-24, Poster PoC 4310.

**Websites:** [www.aids.africa.com](http://www.aids.africa.com)

## Annex: HIV surveillance by site

Group	Area	1987	1988	1989	1990	1991	1992	1993	1994	1995	1996	1997	1998	1999	2000	2001	2002	2003		
Pregnant women	Outside major urban areas	Kaplong, Kaplong (rural)									4.10	6.40	6.40	5.60	4.40					
		Karurumo, Karurumo (rural)								2.00	10.25		26.60	11.50			6.00			
		Khunyanggo (KEMRI), Khunyanggo (rural)											13.00		14.00					
		Kijabe																12.15		
		Kilimambogo, Kilimambogo (rural)								0										
		Kisii				1.62	4.39	3.50	2.50	8.90	4.33	15.80	16.40	14.70	12.50	15.80	12.70			
		Kisumu							19.60						29.50					
		Kitale				3.47	5.63	21.33	7.50	9.30	10.00	12.10	12.70	10.20	17.60	16.60				
		Kitui				0.99	4.77	2.04	7.50	6.30	4.09	4.50		5.90	9.80	8.60	13.70			
		Kombewa (KEMRI), Kombewa (rural)												36.00		29.00				
		Lodwar																	16.50	
		Machakos district, Machakos district		0.50	3.15															
		Maragua, Maragua (rural)									7.00	12.72		10.80	7.00		9.50	8.00		
		Maralal, Maralal (rural)																	15.00	
		Matayos (KEMRI), Matayos (rural)												13.00		14.00				
		Mbale, Mbale (semirural)									11.90	10.66		15.90	11.80	13.10	24.80	11.00		
		Meru					2.70		2.30	6.90	8.66	15.50		13.80	22.90	22.60	38.20			
		Mosoriot, Mosoriot (rural)									2.40	12.50		9.10	3.30		7.30	4.00		
		Motomo, Motomo (rural)									0	4.70	5.70							
		Attending clinics, Kisumu					19.23	20.04	20.00		30.40	27.25	27.30	33.50	30.61	27.20	35.00	28.50		
		Bamba, Bamba (rural)																	9.00	
		Busia					17.07	10.49	29.67	22.20	19.40	22.00	28.10	28.80	29.70	33.80	21.90			
		Chogoria, Chogoria (rural)											4.10							
		Chulaimbo (KEMRI), Chulaimbo (rural)												22.00		30.00				
		Chulaimbo, Chulaimbo (rural)									49.20	21.84	27.20		37.30	25.90	31.10	25.00		
		Fatima, Fatima (rural)																	22.00	
		Garissa					4.91	0	5.33	3.80	5.90	5.76	5.00	7.60	6.40	6.30				
		Kajiado district, Kajiado district			0.90		1.40	2.10	2.60			6.50	7.50	9.60	7.60					
		Kakamega					5.33	11.46	15.07	8.60	10.30	11.67	10.50	10.00	15.80	12.30	12.00			
		Kangundo, Kangundo (rural)																	13.00	
		Mutomo, Mutomo (rural)																	2.00	
		Nakuru					9.91	13.30	12.50	22.50	30.30	27.17	11.00	24.60	24.70	26.50	10.60	12.20		
		Njambini, Njambini (rural)												5.40	4.10		9.30	6.00		
		Nyahera (KEMRI), Nyahera (rural)												33.00		41.00				
		Nyanze Provincial Gen. Hosp., Kisumu												26.13						
		Nyeri					2.94	4.96	7.86	3.20	6.30	6.19	9.20	6.80	17.30		14.00			
		Provincial Hospital, Kisumu												24.90						
		Rachuonyo dist. (KEMRI), Rachuonyo district/ rural														30.00				
		Siaya (KEMRI), Siaya (rural)												24.00		40.00				
		Sirikwa-Turbo, Sirikwa-Turbo (rural)																	5.00	
		Suba, Suba (rural)																	31.00	
		Thika					2.50	9.57	2.63	27.50	19.60		12.90	19.30	32.70	17.90	21.50			
Tiwi, Tiwi (semirural)									16.90	23.97			33.30	22.80	14.40	10.00				
Usigu (KEMRI), Usigu (rural)												30.00		33.00						
Wesu-Wundanyi, Wesu-Wundanyi (rural)																	7.00			



Group	Area	1987	1988	1989	1990	1991	1992	1993	1994	1995	1996	1997	1998	1999	2000	2001	2002	2003		
Pregnant women	Major urban areas	Attending clinics, Nairobi				11.87	11.00							15.67		14.40				
		City Council Clinics, Nairobi					12.14	12.89	16.24	14.84	15.65		15.93			14.98				
		Kenyatta, Nairobi				5.80	15.76	15.00												
		Langata HC, Nairobi			6.55	8.86	7.60	14.40												
		Mombasa				10.18	16.67	11.06	16.50	12.20	12.25	12.00	17.40	16.30		12.20	14.30			
		Nairobi (1), Nairobi							16.60	22.00	24.60									
Sex workers	Major urban areas	Pumwani MH, Nairobi	2.65		7.75	13.00					18.10		11.00		18.40					
		Athi River, Nairobi						39.00												
		Kibera, Nairobi												25.32	28.17					
		Majengo, Nairobi					85.92	86.25												
		Mombasa			39.34				55.99	54.04	54.61	50.95	50.93				51.76			
		Nairobi (1), Nairobi	80.50		67.23	73.80	75.24	85.49									27.00			
Injecting drug users	Outside major urban areas	Nairobi (2), Nairobi		69.00	87.76											24.08				
		Nairobi (3), Nairobi																		
		Kisumu												74.70						
		STI patients	9.03		13.83			22.56	25.30	13.30		38.42		29.00						
		Major urban areas								32.97	32.00									
		Kenyatta, Nairobi										38.26								
Men having sex with men	Major urban areas	Langata HC, Nairobi				16.72														
		Mombasa				32.11		30.69		9.20										
		Nairobi (1), Nairobi				19.10		20.30				14.00								
		Nairobi (2), Nairobi						21.56												
		Nairobi (3), Nairobi						16.73												
		Outside major urban areas				33.33		49.67												
		Busia				25.47														
		Garissa				6.82	19.90	21.33												
		Kakamega					15.59	16.00												
		Kisii					16.85	32.69	33.61											
		Kisumu				3.41														
		Kitale					12.85	52.86												
		Kitui				16.39	21.74	33.00												
		Nakuru				5.31	11.72	11.54												
Nyeri				9.87	17.02	7.27														
Tuberculosis patients	Major urban areas	Thika																		
		Infected Diseases Hosp., Nairobi				30.42	30.33			43.68										
		Kenyatta, Nairobi						42.31												
		Mombasa								45.00										
		Nairobi (1), Nairobi		16.01	26.50					36.01										
		Outside major urban areas								71.15										
		Busia district																		
		Chogoria, Chogoria (rural)										17.00	22.00							
		Homa Bay dist, Homa Bay district									72.73									
		Kakamega dist, Kakamega district									33.33									
		Kiambu district									33.80									
		Kilifi district									24.49									
		Kisii district									25.64									
		Kisumu district									60.82									
		Kitui district									33.72									
		Kwale district									29.03									
Meru district									19.74											
Nakuru district									41.10											
Trans Nzoia district									11.76											