

2004
Update



South Africa

EPIDEMIOLOGICAL FACT SHEETS
ON HIV/AIDS AND SEXUALLY TRANSMITTED INFECTIONS



Joint United Nations Programme on HIV/AIDS

UNAIDS

UNHCR • UNICEF • WFP • UNDP • UNFPA
UNODC • ILO • UNESCO • WHO • WORLD BANK



World Health
Organization

HIV/AIDS estimates

In 2003 and during the first quarter of 2004, UNAIDS and WHO worked closely with national governments and research institutions to recalculate current estimates on people living with HIV/AIDS. These calculations are based on the previously published estimates for 1999 and 2001 and recent trends in HIV/AIDS surveillance in various populations. A methodology developed in collaboration with an international group of experts was used to calculate the new estimates on prevalence and incidence of HIV and AIDS deaths, as well as the number of children infected through mother-to-child transmission of HIV. Different approaches were used to estimate HIV prevalence in countries with low-level, concentrated or generalised epidemics. The current estimates do not claim to be an exact count of infections. Rather, they use a methodology that has thus far proved accurate in producing estimates that give a good indication of the magnitude of the epidemic in individual countries. However, these estimates are constantly being revised as countries improve their surveillance systems and collect more information.

Adults in this report are defined as women and men aged 15 to 49. This age range covers people in their most sexually active years. While the risk of HIV infection obviously continues beyond the age of 50, the vast majority of those who engage in substantial risk behaviours are likely to be infected by this age. The 15 to 49 range was used as the denominator in calculating adult HIV prevalence.

Estimated number of adults and children living with HIV/AIDS, end of 2003

These estimates include all people with HIV infection, whether or not they have developed symptoms of AIDS, alive at the end of 2003:

Adults and children	5,300,000		
Low estimate	4,500,000		
High estimate	6,200,000		
Adults (15-49)	5,100,000	Adult rate (%)	21.5
Low estimate	4,300,000	Low estimate	18.5
High estimate	5,900,000	High estimate	24.9
Children (0-15)	230,000		
Low estimate	150,000		
High estimate	340,000		
Women (15-49)	2,900,000		
Low estimate	2,500,000		
High estimate	3,300,000		

Estimated number of deaths due to AIDS

Estimated number of adults and children who died of AIDS during 2003:

Deaths in 2003	370,000
Low estimate	270,000
High estimate	520,000

Estimated number of orphans

Estimated number of children who have lost their mother or father or both parents to AIDS and who were alive and under age 17 at the end of 2003:

Current living orphans	1,100,000
Low estimate	710,000
High estimate	1,500,000

Assessment of the epidemiological situation 2004

National sentinel surveillance surveys of antenatal clinic (ANC) attendees were conducted in South Africa since 1990. Surveillance shows a consistent and dramatic increase among pregnant women tested up to 2002. HIV information is available by province. In KwaZulu-Natal, Western Cape, Eastern Cape and Gauteng provinces, where the major urban areas of Johannesburg, Pretoria, Durban, and Port Elizabeth are located, HIV prevalence among ANC attendees tested increased from less than 1 percent in 1990 to a median of 28 percent in 2002. In Free State, North Cape, Mpumalanga, Northern and North West provinces, HIV prevalence among ANC attendees tested increased from less than 1 percent in 1990 to 26 percent in 2002.

Age data is available for the years 1991 through 2002. HIV prevalence among ANC women less than 20 years of age increased from 2 percent in 1991 to 21 percent in 1998. Since 1998, HIV prevalence in this age group declined to 15 percent. Since 1998, HIV prevalence among ANC women 20-24 years of age has remained around 24 percent.

HIV prevalence among sex workers tested in KwaZulu-Natal increased from 50 percent in 1996-1997 to 61 percent in 1998. In 2000, 50 percent of sex workers tested were HIV positive. In the late 1990s, HIV prevalence among sex workers in the mining areas of Carletonville and Khutsong had reached 70 percent.

Information on HIV prevalence among STD clinic patients is available from Johannesburg since 1988. Among male STD clinic patients, HIV prevalence increased from 1.5 percent in 1988 to 19 percent in 1994; and among females, HIV prevalence increased from 1 percent in 1988 to 25 percent in 1994. In Durban, from 1995 to 1999, HIV prevalence for both male and female STD clinic patients tested increased from 40 percent to 54 percent. In 2000, 64 percent of male and 50 percent of female STD clinic patients tested HIV positive. There is very little information on HIV prevalence for STD clinic patients tested outside the major urban areas. In 1998, in Cape Town, 10 percent of male patients tested were HIV positive.

In 1999, in six sites outside the major urban areas, 56 percent of truck drivers tested were HIV positive.

There is limited information available on HIV prevalence for men who have sex with men (MSM). In 1986, in Durban and KwaZulu-Natal, median HIV prevalence was 8 percent. In Cape Town, HIV prevalence was 11 percent.

UNAIDS/WHO Working Group on Global HIV/AIDS and STI Surveillance

Global Surveillance of HIV/AIDS and sexually transmitted infections (STIs) is a joint effort of WHO and UNAIDS. The UNAIDS/WHO Working Group on Global HIV/AIDS and STI Surveillance, initiated in November 1996, guides respective activities. The primary objective of the Working Group is to strengthen national, regional and global structures and networks for improved monitoring and surveillance of HIV/AIDS and STIs. For this purpose, the Working Group collaborates closely with national AIDS programmes and a number of national and international experts and institutions. The goal of this collaboration is to compile the best information available and to improve the quality of data needed for informed decision-making and planning at national, regional, and global levels. The Epidemiological Fact Sheets are one of the products of this close and fruitful collaboration across the globe.

Within this framework, the Fact Sheets collate the most recent country-specific data on HIV/AIDS prevalence and incidence, together with information on behaviours (e.g. casual sex and condom use) which can spur or stem the transmission of HIV.

Not unexpectedly, information on all of the agreed upon indicators was not available for many countries in 2003. However, these updated Fact Sheets do contain a wealth of information which allows identification of strengths in currently existing programmes and comparisons between countries and regions. The Fact Sheets may also be instrumental in identifying potential partners when planning and implementing improved surveillance systems.

The fact sheets can be only as good as information made available to the UNAIDS/WHO Working Group on Global HIV/AIDS and STI Surveillance. Therefore, the Working Group would like to encourage all programme managers as well as national and international experts to communicate additional information to them whenever such information becomes available. The Working Group also welcomes any suggestions for additional indicators or information proven to be useful in national or international decision-making and planning.

Basic indicators

For consistency reasons the data used in the table below are taken from official UN publications.

DEMOGRAPHIC DATA	YEAR	ESTIMATE	SOURCE
Total population (thousands)	2004	45,214	UN population division database
Female population aged 15-24 (thousands)	2004	4,792	UN population division database
Population aged 15-49 (thousands)	2004	24,403	UN population division database
Annual population growth rate (%)	1992-2002	1.5	UN population division database
% of population in urban areas	2003	56.7	UN population division database
Average annual growth rate of urban population	2000-2005	1.4	UN population division database
Crude birth rate (births per 1,000 pop.)	2004	22	UN population division database
Crude death rate (deaths per 1,000 pop.)	2004	19	UN population division database
Maternal mortality rate (per 100,000 live births)	2000	230	WHO (WHR2004)/UNICEF
Life expectancy at birth (years)	2002	50.7	World Health Report 2004, WHO
Total fertility rate	2002	2.6	World Health Report 2004, WHO
Infant mortality rate (per 1,000 live births)	2000	49	World Health Report 2004, WHO
Under 5 mortality rate (per 1,000 live births)	2000	71	World Health Report 2004, WHO

SOCIO-ECONOMIC DATA	YEAR	ESTIMATE	SOURCE
Gross national income, ppp, per capita (Int.\$)	2002	9,870	World Bank
Gross domestic product, per capita % growth	2001-2002	2.2	World Bank
Per capita total expenditure on health (Int.\$)	2001	652	World Health Report 2004, WHO
General government expenditure on health as % of total expenditure on health	2001	41.4	World Health Report 2004, WHO
Total adult illiteracy rate	2000	14.8	UNESCO
Adult male illiteracy rate	2000	14.0	UNESCO
Adult female illiteracy rate	2000	15.4	UNESCO
Gross primary school enrolment ratio, male	2000/2001	115	UNESCO
Gross primary school enrolment ratio, female	2000/2001	108	UNESCO
Gross secondary school enrolment ratio, male	2000/2001	83	UNESCO
Gross secondary school enrolment ratio, female	2000/2001	91	UNESCO

Contact address

UNAIDS/WHO Working Group on Global
HIV/AIDS and STI Surveillance
20, Avenue Appia
CH - 1211 Geneva 27
Switzerland
Fax: +41-22-791-4834

email: hivstrategicinfo@who.int or
estimates@unaids.org

website: <http://www.who.int/hiv>
<http://www.unaids.org>

Extracts of the information contained in these fact sheets may be reviewed, reproduced or translated for research or private study but not for sale or for use in conjunction with commercial purposes. Any use of information in these fact sheets should be accompanied by the following acknowledgment "UNAIDS/WHO epidemiological fact sheets on HIV/AIDS and Sexually Transmitted Infections, 2004 Update".

HIV prevalence in different populations

This section contains information about HIV prevalence in different populations. The data reported in the tables below are mainly based on the HIV database maintained by the United States Bureau of the Census where data from different sources, including national reports, scientific publications and international conferences are compiled. To provide a simple overview of the current situation and trends over time, summary data are given by population group, geographical area (Major Urban Areas versus Outside Major Urban Areas), and year of survey. Studies conducted in the same year are aggregated and the median prevalence rates (in percentages) are given for each of the categories. The maximum and minimum prevalence rates observed, as well as the total number of surveys/sentinel sites, are provided with the median, to give an overview of the diversity of HIV-prevalence results in a given population within the country. Data by sentinel site or specific study from which the medians were calculated are printed at the end of this fact sheet.

The differentiation between the two geographical areas Major Urban Areas and Outside Major Urban Areas is not based on strict criteria, such as the number of inhabitants. For most countries, Major Urban Areas were considered to be the capital city and - where applicable - other metropolitan areas with similar socio-economic patterns. The term Outside Major Urban Areas considers that most sentinel sites are not located in strictly rural areas, even if they are located in somewhat rural districts.

HIV sentinel surveillance*

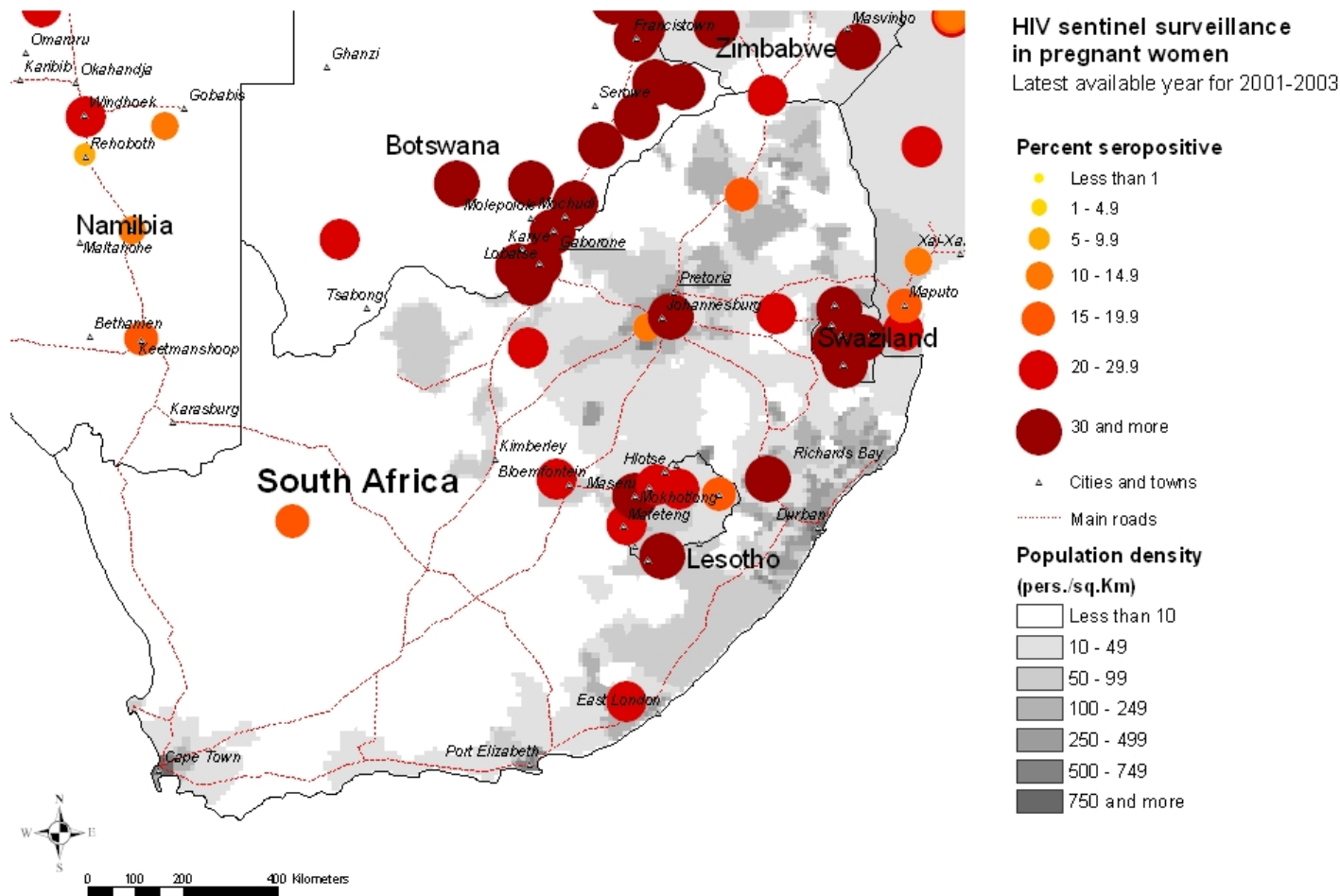
Group	Area		1987	1988	1989	1990	1991	1992	1993	1994	1995	1996	1997	1998	1999	2000	2001	2002	2003	
Pregnant women	Major urban areas	N-Sites				4.00	4.00	4.00	4.00	4.00	5.00	4.00	4.00	4.00	4.00	4.00	4.00	4.00		
		Minimum				0.06	0.08	0.25	0.56	1.55	1.66	3.99	6.29	5.20	7.10	8.70	8.60	12.40		
		Median				0.55	0.85	1.75	3.04	5.94	12.03	13.45	14.85	19.20	20.95	24.30	25.75	27.60		
		Maximum				1.59	2.20	2.71	9.34	13.52	23.75	19.74	26.92	32.50	32.50	36.20	33.50	36.50		
	Outside major urban areas	N-Sites				5.00	5.00	5.00	5.00	5.00	5.00	5.00	5.00	5.00	5.00	5.00	5.00	5.00	5.00	
		Minimum				0.20	0.12	0.65	1.07	1.80	4.89	6.24	8.20	9.90	10.10	11.20	14.50	15.10		
		Median				0.38	1.21	1.05	2.19	6.68	8.30	16.29	18.09	21.30	23.00	22.90	25.20	26.20		
		Maximum				1.05	6.54	3.06	4.34	12.77	16.18	23.81	22.55	30.00	27.90	29.70	30.10	28.80		
	Sex workers	Major urban areas	N-Sites											1.00	1.00		1.00			
			Minimum												50.34	61.11		50.30		
			Median												50.34	61.11		50.30		
			Maximum												50.34	61.11		50.30		
Outside major urban areas		N-Sites												1.00	3.00	2.00				
		Minimum												44.20	56.00	68.60				
		Median												44.20	67.20	70.40				
		Maximum												44.20	69.00	72.20				
Injecting drug users	Major urban areas	N-Sites		4.00	2.00	2.00	2.00	2.00	2.00	2.00	1.00	1.00	1.00	2.00	1.00	3.00	1.00			
		Minimum		0.75	1.90	5.09	8.55	12.65	15.77	18.76	39.89	47.06	52.30	41.80	53.72	50.00	45.00			
		Median		1.50	2.29	5.58	9.45	15.26	18.65	21.74	39.89	47.06	52.30	49.15	53.72	64.34	45.00			
		Maximum		3.20	2.69	6.07	10.34	17.88	21.54	24.71	39.89	47.06	52.30	56.50	53.72	78.00	45.00			
	Outside major urban areas	N-Sites	1.00	1.00	1.00										1.00					
		Minimum	0	0.23	0.08										9.90					
		Median	0	0.23	0.08										9.90					
		Maximum	0	0.23	0.08										9.90					
	Men having sex with men	Major urban areas	N-Sites																	
			Minimum																	
			Median																	
			Maximum																	
Outside major urban areas		N-Sites																		
		Minimum																		
		Median																		
		Maximum																		
Tuberculosis patients	Major urban areas	N-Sites			2.00	1.00	1.00	1.00											1.00	
		Minimum			0	4.70	8.70	29.80											68.50	
		Median			1.01	4.70	8.70	29.80											68.50	
		Maximum			2.01	4.70	8.70	29.80											68.50	
	Outside major urban areas	N-Sites					2.00	1.00	2.00	1.00	2.00	1.00	1.00		1.00	1.00				
		Minimum					0.47	42.00	35.00	46.00	55.00	38.00	68.00		53.35	52.00				
		Median					14.74	42.00	39.00	46.00	56.50	38.00	68.00		53.35	52.00				
		Maximum					29.00	42.00	43.00	46.00	58.00	38.00	68.00		53.35	52.00				

*Detailed data by site can be found in the Annex.

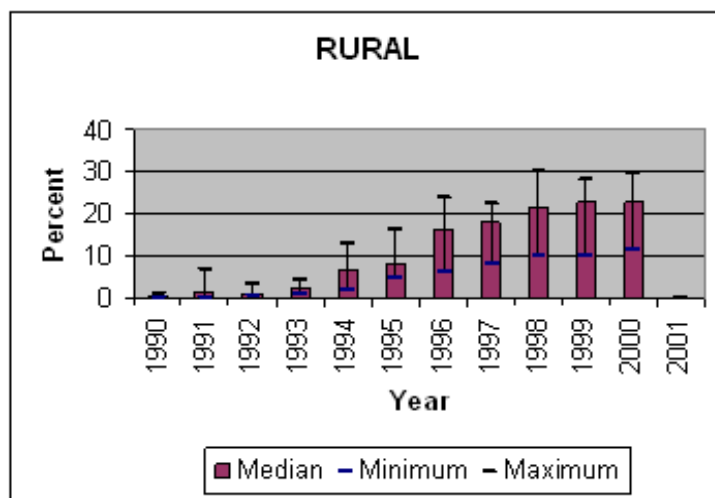
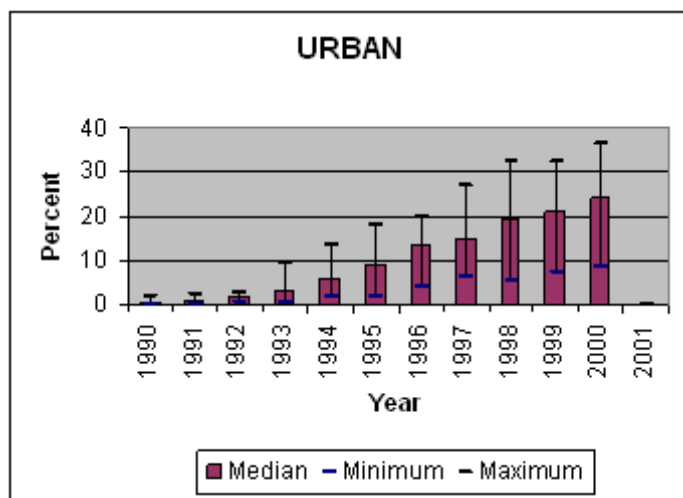
Maps & charts

Mapping the geographical distribution of HIV prevalence among different population groups may assist in interpreting both the national coverage of the HIV surveillance system as well in explaining differences in levels of prevalence. The UNAIDS/WHO Working Group on Global HIV/AIDS and STI Surveillance, in collaboration with the WHO Public Health Mapping Team, Communicable Diseases, is producing maps showing the location and HIV prevalence in relation to population density, major urban areas and communication routes. For generalized epidemics, these maps show the location of prevalence of antenatal surveillance sites.

Trends in antenatal sentinel surveillance for higher prevalence countries, or in prevalence among selected populations for countries with concentrated epidemics, are a new addition. These are presented for those countries where sufficient data exist.



Trends in HIV prevalence among antenatal clinic attendees



Median prevalence and ranges are shown in areas with more than one sentinel site.

The boundaries and names shown and the designations used on the map do not imply the expression of any opinion whatsoever on the part of the World Health Organization concerning the legal status of any country, territory, city or area or of its authorities, or concerning the delimitation of its frontiers or boundaries. Dotted lines on maps represent approximate border lines for which there may not yet be full agreement. WHO 2004, all rights reserved.

Reported AIDS cases

Following WHO and UNAIDS recommendations, AIDS case reporting is carried out in most countries. Data from individual AIDS cases are aggregated at the national level and sent to WHO. However, case reports come from surveillance systems of varying quality. Reporting rates vary substantially from country to country and low reporting rates are common in developing countries due to weaknesses in the health care and epidemiological systems. In addition, countries use different AIDS case definitions. A main disadvantage of AIDS case reporting is that it only provides information on transmission patterns and levels of infection approximately 5-10 years in the past, limiting its usefulness for monitoring recent HIV infections.

Despite these caveats, AIDS case reporting remains an important advocacy tool and is useful in estimating the burden of HIV-related morbidity as well as for short-term planning of health care services. AIDS case reports also provide information on the demographic and geographic characteristics of the affected population and on the relative importance of the various exposure risks. In some situations, AIDS reports can be used to estimate earlier HIV infection patterns using back-calculation. AIDS case reports and AIDS deaths have been dramatically reduced in industrialized countries with the introduction of Anti-Retroviral Therapy (ART).

1979	1980	1981	1982	1983	1984	1985	1986	1987	1988	1989	1990	1991	1992	1993	1994	1995	1996	1997	1998
0	0	0	2	4	8	8	34	51	98	184	345	549	887	1882	3816	4219	738		
1999	2000	2001	2002	2003	Total		UNK	Date of last report											
					12825			10/30/1996											

Curable sexually transmitted infections (STIs)

The predominant mode of transmission of both HIV and other STIs is sexual intercourse. Measures for preventing sexual transmission of HIV and STIs are the same, as are the target audiences for interventions. In addition, strong evidence supports several biological mechanisms through which STIs facilitate HIV transmission by increasing both HIV infectiousness and HIV susceptibility. Thus, detection and treatment of individuals with STIs is an important part of an HIV control strategy. In summary, if the incidence/prevalence of STIs is high in a country, then there is the possibility of high rates of sexual transmission of HIV. Monitoring trends in STIs provides valuable insight into the likelihood of the importance of sexual transmission of HIV within a country, and is part of second generation surveillance. These trends also assist in assessing the impact of behavioural interventions, such as delaying sexual debut, reducing the number of sex partners and promoting condom use.

Clinical services offering STI care are an important access point for people at high risk for both STIs and HIV. Identifying people with STIs allows for not only the benefit of treating the STI, but for prevention education, HIV testing, identifying HIV-infected persons in need of care, and partner notification for STIs or HIV infection. Consequently, monitoring different components of STI prevention and control can also provide information on HIV prevention and control activities within a country.

STI syndromes

Reported cases	1996	1997	1998	1999	2000	2001	2002	2003	Incidence 2003
----------------	------	------	------	------	------	------	------	------	----------------

Comments:

Source:

Syphilis prevalence, women

Percent of blood samples taken from pregnant women aged 15-49 that test positive for syphilis - positive reaginic and treponemal test - during routine screening at selected antenatal clinics.

Year	Area	Rate	Range
------	------	------	-------

Comments:

Source:

Estimated prevalence of curable STIs among female sex workers

- Chlamydia

Year	Area	Rate	Range
1997-1999	Rural	16.4	

Comments:

Source: Ramjee G. Sexually transmitted infections among sex workers in KwaZulu-Natal, South Africa. Sex Transm Dis 1998; 25 (7): 346-349.

- Gonorrhoea

Year	Area	Rate	Range
1997-1999	Rural	14.3	

Comments:

Source: Ramjee G. Sexually transmitted infections among sex workers in KwaZulu-Natal, South Africa. Sex Transm Dis 1998; 25 (7): 346-349.

Estimated prevalence of curable STIs among female sex workers (continued)**- Syphilis**

Year	Area	Rate	Range
1997-1999	Rural	42.1	

Comments:

Source: Ramjee G. Sexually transmitted infections among sex workers in KwaZulu-Natal, South Africa. Sex Transm Dis 1998; 25 (7): 346-349.

- Trichomoniasis

Year	Area	Rate	Range
1997-1999	Rural	41.3	

Comments:

Source: Ramjee G. Sexually transmitted infections among sex workers in KwaZulu-Natal, South Africa. Sex Transm Dis 1998; 25 (7): 346-349.

Health service and care indicators

HIV prevention strategies depend on the twin efforts of care and support for those living with HIV or AIDS, and targeted prevention for all people at risk or vulnerable to the infection. It is difficult to capture such a large range of activities with one or just a few indicators. However, a set of well-established health care indicators may help to identify general strengths and weaknesses of health systems. Specific indicators, such as access to testing and blood screening for HIV, help to measure the capacity of health services to respond to HIV/AIDS - related issues.

Access to health care

Indicators	Year	Estimate	Source
% of population with access to health services - total			
% of population with access to health services - urban			
% of population with access to health services - rural			
Contraceptive prevalence rate (%)	1998	56.3	UNICEF/UNPOP
Percentage of contraceptive users using condoms			
% of births attended by skilled health personnel	2000	84.4	WHO
% of 1-yr-old children fully immunized - DPT	2002	82	WHO/UNICEF
% of 1-yr-old children fully immunized - Measles	2001	72	WHO/UNICEF
% of ANC clinics where HIV testing is available			

Number of adults (15-49) with advanced HIV infection receiving ARV therapy as of June 2004

Adults on treatment

Number: 20,000

Source: WHO

Estimated number of adults (15-49) in need of treatment in 2003

Adults needing treatment

Number: 750,000

Source: WHO/UNAIDS

Coverage of HIV testing and counselling

Number of public and NGO services providing testing and counselling services.

Year	Area	N=
------	------	----

Comments:

Source:

Knowledge and behaviour

In most countries the HIV epidemic is driven by behaviours (e.g.: multiple sexual partners, injecting drug use) that expose individuals to the risk of infection. Information on knowledge and on the level and intensity of risk behaviour related to HIV/AIDS is essential in identifying populations most at risk for HIV infection and in better understanding the dynamics of the epidemic. It is also critical information in assessing changes over time as a result of prevention efforts. One of the main goals of the 2nd generation HIV surveillance systems is the promotion of a standard set of indicators defined in the National Guide (Source: National AIDS Programmes, A Guide to Monitoring and Evaluation, UNAIDS/00.17) and regular behavioural surveys in order to monitor trends in behaviours and to target interventions.

The indicators on knowledge and misconceptions are an important prerequisite for prevention programmes to focus on increasing people's knowledge about sexual transmission, and, to overcome the misconceptions that act as a disincentive to behaviour change. Indicators on sexual behaviour and the promotion of safer sexual behaviour are at the core of AIDS programmes, particularly with young people who are not yet sexually active or are embarking on their sexual lives, and who are more amenable to behavioural change than adults. Finally, higher risk male-male sex reports on unprotected anal intercourse, the highest risk behaviour for HIV among men who have sex with men.

Knowledge of HIV prevention methods

Prevention indicator: Percentage of young people 15-24 who both correctly identify two ways of preventing the sexual transmission of HIV and who reject three misconceptions about HIV transmission.

Year	Male	Female
1998		20

Comments:

Source: DHS

Reported condom use at last higher risk sex (young people 15-24)

Prevention indicator: Proportion of young people reporting the use of a condom during sex with a non-regular partner.

Year	Male	Female
1998		20

Comments:

Source: DHS

Age-mixing in sexual partnerships among young women

The proportion of young women who have had sex in the last 12 months with a partner who is 10 or more years older than themselves.

Year	Area	Age group	Male	Female	All
------	------	-----------	------	--------	-----

Comments:

Source:

Reported non-regular sexual partnerships

Prevention indicator: Proportion of young people 15-24 having at least one sex partner other than a regular partner in the last 12 months.

Year	Male	Female
------	------	--------

Comments:

Source:

Knowledge and behaviour (continued)Ever used a condom

Percentage of people who ever used a condom.

Year	Area	Age group	Male	Female	All
------	------	-----------	------	--------	-----

Comments:

Source:

Adolescent pregnancy

Percentage of teenagers 15-19 who are mothers or pregnant with their first child.

Year	Percentage
1998	16.8

Comments:

Source:

Age at first sexual experience

Proportion of 15-19 year olds who have had sex before age 15.

Year	Male	Female
1998		9

Comments:

Source: DHS

Prevention indicators

Male and female condoms are the only technology available that can prevent sexual transmission of HIV and other STIs. Persons exposing themselves to the risk of sexual transmission of HIV should have consistent access to high quality condoms. AIDS Programs implement activities to increase both availability of and access to condoms. These activities should be monitored and have resources directed to problem areas. The indicator below highlights the availability of condoms. However, even if condoms are widely available, this does not mean that individuals can or do access them.

Condom availability nationwide

Total number of condoms available for distribution nationwide during the preceding 12 months, divided by the total population aged 15-49.

Year	N	Rate
------	---	------

Comments:

Source:

Prevention of mother-to-child transmission (MTCT) nationwide

Percentage of women who were counselled during antenatal care for their most recent pregnancy, accepted an offer of testing and received their test results, of all women who were pregnant at any time in the preceding two years.

Year	N	Rate
------	---	------

Comments:

Source:

Blood safety programs aim to ensure that the majority of blood units are screened for HIV and other infectious agents. This indicator gives an idea of the overall percentage of blood units that have been screened to high enough standards that they can confidently be declared free of HIV.

Screening of blood transfusions nationwide

Percentage of blood units transfused in the last 12 months that have been adequately screened for HIV according to national or WHO guidelines.

Year	N	Rate
------	---	------

Comments:

Source:

Sources

Data presented in this Epidemiological Fact Sheet come from several sources, including global, regional and country reports, published documents and articles, posters and presentations at international conferences, and estimates produced by UNAIDS, WHO and other United Nations agencies. This section contains a list of the more relevant sources used for the preparation of the Fact Sheet. Where available, it also lists selected national Web sites where additional information on HIV/AIDS and STI are presented and regularly updated. However, UNAIDS and WHO do not warrant that the information in these sites is complete and correct and shall not be liable whatsoever for any damages incurred as a result of their use.

Becker, W. B. 1986 HTLV-3 Infection in the RSA South African Medical Journal, Oct. 11, suppl no. 11, pp. 26-27.

Bergemann, A., A. S. Karstaedt 1996 The Spectrum of Meningitis in a Population with High Prevalence of HIV Disease Q J Med, vol. 89, pp. 499-504.

Couper, I. D., S. B. Vumase 1996 HIV in Northern KwaZulu-Natal South African Medical Journal, vol. 86, no. 2, p. 179.

Chen, C. Y., S. A. Morse, J. Love, et al. 1998 Effect of HIV on Emergence of Genital Herpes Simplex Virus-2 (HSV) among Male STD Clinic Patients in South Africa 38th Intersci Conf Antimicrob Agents Chemother., San Diego, CA, 1998, Sept. 24-27, Abst. no. H-30, Abstract in National Library of Medicine: Internet Grateful Med. v2.6.3. AIDS/202710774.

Connolly, C., A. Reid, G. Davies, et al. 1999 Relapse and Mortality among HIV-Infected and Uninfected Patients with Tuberculosis Successfully Treated with Twice Weekly ... AIDS, vol. 13, no. 12, pp. 1543-1547.

Campbell, L. H. Hausler 2000 A Base Line Assessment of HIV Counselling, Testing and TB Services in Preparation for Introduction of TB Preventive Therapy ... XIII International AIDS Conference, Durban, South Africa, 7/9-14, Abstract WePeC4416.

Floyd, K., R. A. Reid, D. Wilkinson, et al. 1999 Admission Trends in a Rural South African Hospital during the Early Years of the HIV Epidemic Journal of the American Medical Association, vol. 282, no. 11, pp. 1087-1091.

Kharsany, A. B. M., Y. Mahabeer, C. Connolly, et al. 2000 Changing Aetiology of Genital Ulcer Disease (GUD) in STD Clinic Attenders with a Rising HIV Prevalence XIII International AIDS Conference, Durban, South Africa, 7/9-14, Abstract ThOrC728.

Martin, D. J., J. G. M. Sim, G. J. Sole, et al. 1995 CD4+ Lymphocyte Count in African Patients Co-Infected with HIV and Tuberculosis Journal of Acquired Immune Deficiency Syndromes and Human Retrovirology, vol. 8, no. 4, pp. 386-391.

Morar, N. S., G. Ramjee, S. S. Abdool Karim 1998 Safe Sex Practices among Sex Workers at Risk of HIV Infection 12th World AIDS Conference, Geneva, 6/28 - 7/3, Poster 33287.

Makubalo, L. E. 1998 Eighth Annual National HIV Sero-Prevalence Survey of Women Attending Antenatal Clinics in South Africa 1997 Department of Health, Health Systems Research and Epidemiology, June, report.

Marais, D. J., E. Vardas, G. Ramjee, et al. 2000 The Impact of Human Immunodeficiency Virus Type 1 Status on Human Papillomavirus (HPV) Prevalence and HPV Antibodies in ... Journal of Infectious Diseases, vol. 182, no. 4, pp. 1239-1242.

Moodley, P., D. Wilkinson, C. Connolly, et al. 2001 Male Urethritis: Impact of HIV Co-Infection and Response to Syndromic Management Presented at International Congress of Sexually Transmitted Infections, ISSTD/ISTD, Berlin, Germany, 24-27 June 2001, Abstract in International Journal of STD & AIDS, vol. 12, suppl. 2, p. 106.

Moodley, P., D. Wilkinson, P. D. J. Sturm, et al. 2001 Association between HIV-1 Infection, the Aetiology of Genital Ulcer Disease and Response to Syndromic Management Presented at International Congress of Sexually Transmitted Infections, ISSTD/ISTD, Berlin, Germany, 24-27 June 2001, Abstract in International Journal of STD & AIDS, vol. 12, suppl. 2, pp. 106-107.

O'Farrell, N., I. Windsor, P. Becker 1990 Risk Factors for HIV-1 Amongst STD Clinic Attenders in Durban, South Africa VI International Conference on AIDS, San Francisco, 6/20-24, Poster F.C.604.

Regional Virus Laboratory 1989 Department of Virology, Faculty of Medicine, University of Natal Paper Unpublished.

RSA Department of National Health and Population Development 1991 AIDS in South Africa: Status on World AIDS Day 1991 Epidemiological Comments, vol. 18, no. 11, pp. 229-249.

RSA Department of National Health and Population Development 1991 First National HIV Survey of Women Attending Antenatal Clinics, South Africa, October/November 1990 Epidemiological Comments, vol. 18, no. 2, pp. 35-44.

RSA Department of National Health and Population Development 1992 Second National Survey of Women Attending Antenatal Clinics, South Africa, October/November 1991 Epidemiological Comments, vol. 19 no. 5, pp. 80-92.

RSA Dept. of National Health and Population Development 1993 Third National HIV Survey of Women Attending Antenatal Clinics, South Africa, October/November 1992 Epidemiological Comments, vol. 20, no. 3, pp. 35-50.

RSA Department of National Health and Population Development 1994 Fourth National HIV Survey of Women Attending Antenatal Clinics, South Africa, October/ November 1993 Epidemiological Comments, vol. 21, no. 4, pp. 68-78.

RSA Department of National Health 1994 NIV Sentinel Surveillance Epidemiological Comments, vol. 21, no. 11, pp. 230-231.

RSA Department of Health 1995 Fifth National HIV Survey in Women Attending Antenatal Clinics of the Public Health Services in South Africa, Oct./Nov. 1994 Epidemiological Comments, vol. 22, no. 5, pp. 90-100.

RSA Department of Health 1996 Sixth National Survey of Women Attending Antenatal Clinics of the Public Health Services in the Republic of South Africa, ... Epidemiological Comments, vol. 23, no. 1, pp. 3-16.

RSA Department of Health 1997 Seventh National HIV Survey of Women Attending Antenatal Clinics of the Public Health Services in the Republic of South ... Epidemiological Comments, vol. 23, no. 2, pp. 4-16.

Ramjee, G., S. S. Abdool Karim, A. W. Sturm 1998 Sexually Transmitted Infections among Sex Workers in KwaZulu-Natal, South Africa Sexually Transmitted Diseases, vol. 25, pp. 346-349.

RSA Department of Health 1999 1998 National Antenatal HIV Sero-Prevalence Survey in South Africa Health Systems Research and Epidemiology, Department of Health, Republic of South Africa, final report.

RSA Department of Health 2000 1999 National HIV Sero-Prevalence Survey of Women Attending Public Antenatal Clinics in South Africa Health Systems Research & Epidemiology, Department of Health, Republic of South Africa, Summary report.

Rustomjee, R., S. Abdool Karim, A. Kharsany 2000 A Randomised Control Trial of Azitromycin Versus Doxycycline/Ciprofloxacin in the Treatment of Sexually Transmitted Chlamydia ... XIII International AIDS Conference, Durban, South Africa, 7/9-14, Abstract WePeC4334.

Ramjee, G., E. Gouws, Z. Stein 2000 HIV Prevalence among Truck Drivers in Kwazulu-Natal. South Africa Implications for the Explosive Nature of the South ... XIII International AIDS Conference, Durban, South Africa, 7/9-14, Poster TuPpD1194.

RSA Department of Health 2001 2000 National HIV and Syphilis Sero-Prevalence Survey of Women Attending Public Antenatal Clinics in South Africa Department of Health, Republic of South Africa, report.

RSA Department of Health 2002 2001 National HIV and Syphilis Sero-Prevalence Survey of Women Attending Public Antenatal Clinics in South Africa Department of Health, Republic of South Africa, Summary report.

Rustomjee, R., J. Levin, C. Gray, et al. 2002 Differences in Immune-Reconstitution Following Tuberculosis Therapy in HIV Positive & HIV Negative Individuals XIV International AIDS Conference, Barcelona, Spain, 7/7-12, Abstract ThPeC7569.

RSA Department of Health 2003 National HIV and Syphilis Antenatal Sero-Prevalence Survey in South Africa: 2002 Department of Health, Republic of South Africa, summary report.

Sher, R. 1989 HIV Infection in South Africa, 1982-1988: A Review South African Medical Journal, vol. 76, p. 314-318.

Schoub, B. D., A. N. Smith, S. Johnson, et al. 1990 Consideration on the Further Expansion of the AIDS Epidemic in South Africa - 1990 South African Medical Journal, vol. 77, pp. 613-618.

Smith, A. 2000 HIV/AIDS in KwaZulu-Natal and South Africa AIDS Analysis Africa, vol. 11, no. 1, pp. 5-9.

Tshibangu, N. N. 1993 HIV Infection in Bophuthatswana: Epidemiological Surveillance 1987-1989 South African Medical Journal, vol. 83, pp. 36-39.

Talijaard, D., B. Williams, C. Campbell, et al. 2002 The Response of a South African Mining Community to the Epidemic of HIV XIV International AIDS Conference, Barcelona, Spain, 7/7-12, Abstract ThPeD7715.

Van Dam, J., R. Ballard, G. Neilssen, et al. 2000 STD and HIV Infection in Carletonville, South Africa: A Community-Based Survey XIII International AIDS Conference, Durban, South Africa, 7/9-14, Poster WePeC4391.

Williams, B., C. Campbell, D. Gilgen, et al. 2000 Assessing the Risk HIV/AIDS in the Carletonville Gold Mining Area XIII International AIDS Conference, Durban, South Africa, 7/9-14, Poster MoPpC1026.

Wilkinson, D. and G. R. Davies 1997 The Increasing Burden of Tuberculosis in Rural South Africa - Impact of the HIV Epidemic South African Medical Journal, vol. 87, no. 4, pp. 447-450.

Websites: www.aids.africa.com
www.uct.ac.za/depts/mmi/index.html
www.mrc.ac.za/aids/intro.html

Annex: HIV surveillance by site

Group	Area	1987	1988	1989	1990	1991	1992	1993	1994	1995	1996	1997	1998	1999	2000	2001	2002	2003		
Pregnant women	Major urban areas	Eastern Cape Province			0.44	0.58	0.96	1.94	4.57	6.00	8.17	12.61	15.90	18.00	20.20	21.70	23.60			
		Gauteng Province			0.66	1.12	2.53	4.13	7.31	12.03	18.74	17.09	22.50	23.90	28.40	29.80	31.60			
		KwaZulu-Natal Province			1.59	2.20	2.71	9.34	13.52	20.99	19.74	26.92	32.50	32.50	36.20	33.50	36.50			
		Western Cape Province			0.06	0.08	0.25	0.56	1.55	1.66	3.99	6.29	5.20	7.10	8.70	8.60	12.40			
	Outside major urban areas	Free State Province			0.60	1.48	3.06	4.34	9.89	11.03	17.94	19.57	22.80	27.90	27.90	30.10	28.80			
		Mpumalanga Province			0.38	1.21	2.23	2.40	12.77	16.18	16.29	22.55	30.00	27.30	29.70	29.20	28.60			
		North-West Province			1.05	6.54	0.94	2.19	6.68	8.30	23.81	18.09	21.30	23.00	22.90	25.20	26.20			
		Northern Cape Province			0.20	0.12	0.65	1.07	1.80	5.34	6.24	8.63	9.90	10.10	11.20	15.90	15.10			
Sex workers	Major urban areas	KwaZulu-Natal Province										50.34	61.11		50.30					
		Outside major urban areas	Carletonville											69.00	68.60					
	Outside major urban areas	Five sites										44.20								
		Khutsong												67.20	72.20					
Injecting drug users	Major urban areas	Durban (1), Durban		2.54						39.89	47.06	52.30	56.50	53.72	64.34	45.00				
		Durban (2), Durban												41.80						
STI patients	Major urban areas	Johannesburg		0.93	2.29	5.58	9.45	15.26	18.65	21.74										
		Outside major urban areas	Bophuthatswan a Republic	0	0.23	0.08														
	Outside major urban areas	Cape Town												9.90						
Men having sex with men	Major urban areas	Durban (1), Durban																		
		Johannesburg																		
Tuberculosis patients	Major urban areas	Natal Province																		
		Outside major urban areas	Cape Town																	
		Johannesburg			0															
		King George V Hospital, KwaZulu reg			2.01															
	Major urban areas	KwaZulu region				4.70	8.70													
		KwaZulu-Natal Province																		68.50
		Rietfontein Hospital, Johannesburg						29.80												
		Outside major urban areas	Ciskei region				0.47													
Outside major urban areas	Hlabisa district, Hlabisa district							35.00		58.00		68.00		53.35						
	Hlabisa Hospital, Hlabisa district				29.00	42.00	43.00	46.00	55.00											
	Port Shepstone														52.00					
	Soweto										38.00									