

2004
Update



Central African Republic

EPIDEMIOLOGICAL FACT SHEETS
ON HIV/AIDS AND SEXUALLY TRANSMITTED INFECTIONS



Joint United Nations Programme on HIV/AIDS

UNAIDS

UNHCR • UNICEF • WFP • UNDP • UNFPA
UNODC • ILO • UNESCO • WHO • WORLD BANK



World Health
Organization

HIV/AIDS estimates

In 2003 and during the first quarter of 2004, UNAIDS and WHO worked closely with national governments and research institutions to recalculate current estimates on people living with HIV/AIDS. These calculations are based on the previously published estimates for 1999 and 2001 and recent trends in HIV/AIDS surveillance in various populations. A methodology developed in collaboration with an international group of experts was used to calculate the new estimates on prevalence and incidence of HIV and AIDS deaths, as well as the number of children infected through mother-to-child transmission of HIV. Different approaches were used to estimate HIV prevalence in countries with low-level, concentrated or generalised epidemics. The current estimates do not claim to be an exact count of infections. Rather, they use a methodology that has thus far proved accurate in producing estimates that give a good indication of the magnitude of the epidemic in individual countries. However, these estimates are constantly being revised as countries improve their surveillance systems and collect more information.

Adults in this report are defined as women and men aged 15 to 49. This age range covers people in their most sexually active years. While the risk of HIV infection obviously continues beyond the age of 50, the vast majority of those who engage in substantial risk behaviours are likely to be infected by this age. The 15 to 49 range was used as the denominator in calculating adult HIV prevalence.

Estimated number of adults and children living with HIV/AIDS, end of 2003

These estimates include all people with HIV infection, whether or not they have developed symptoms of AIDS, alive at the end of 2003:

Adults and children	260,000		
Low estimate	160,000		
High estimate	410,000		
Adults (15-49)	240,000	Adult rate (%)	13.5
Low estimate	150,000	Low estimate	8.3
High estimate	380,000	High estimate	21.2
Children (0-15)	21,000		
Low estimate	11,000		
High estimate	38,000		
Women (15-49)	130,000		
Low estimate	83,000		
High estimate	210,000		

Estimated number of deaths due to AIDS

Estimated number of adults and children who died of AIDS during 2003:

Deaths in 2003	23,000
Low estimate	13,000
High estimate	40,000

Estimated number of orphans

Estimated number of children who have lost their mother or father or both parents to AIDS and who were alive and under age 17 at the end of 2003:

Current living orphans	110,000
Low estimate	77,000
High estimate	160,000

UNAIDS/WHO Working Group on Global HIV/AIDS and STI Surveillance

Global Surveillance of HIV/AIDS and sexually transmitted infections (STIs) is a joint effort of WHO and UNAIDS. The UNAIDS/WHO Working Group on Global HIV/AIDS and STI Surveillance, initiated in November 1996, guides respective activities. The primary objective of the Working Group is to strengthen national, regional and global structures and networks for improved monitoring and surveillance of HIV/AIDS and STIs. For this purpose, the Working Group collaborates closely with national AIDS programmes and a number of national and international experts and institutions. The goal of this collaboration is to compile the best information available and to improve the quality of data needed for informed decision-making and planning at national, regional, and global levels. The Epidemiological Fact Sheets are one of the products of this close and fruitful collaboration across the globe.

Within this framework, the Fact Sheets collate the most recent country-specific data on HIV/AIDS prevalence and incidence, together with information on behaviours (e.g. casual sex and condom use) which can spur or stem the transmission of HIV.

Not unexpectedly, information on all of the agreed upon indicators was not available for many countries in 2003. However, these updated Fact Sheets do contain a wealth of information which allows identification of strengths in currently existing programmes and comparisons between countries and regions. The Fact Sheets may also be instrumental in identifying potential partners when planning and implementing improved surveillance systems.

The fact sheets can be only as good as information made available to the UNAIDS/WHO Working Group on Global HIV/AIDS and STI Surveillance. Therefore, the Working Group would like to encourage all programme managers as well as national and international experts to communicate additional information to them whenever such information becomes available. The Working Group also welcomes any suggestions for additional indicators or information proven to be useful in national or international decision-making and planning.

Assessment of the epidemiological situation 2004

In 2002, HIV surveillance was conducted among pregnant women attending 48 antenatal care clinics in 17 districts. Although HIV sentinel surveillance was established in 1986, no surveys were conducted between 1997 and 2000.

In 2002, only 8 of the 48 ANC sites reported HIV prevalence rates of <10%. In Bangui, HIV prevalence among ANC attendees remained relatively stable between 1986 and 1990 in the range of 4.7% to 6.8%. The median HIV prevalence among women attending two antenatal care clinics in Bangui remained relatively stable (9.3%-14.0%) between 1994 and 2002.

Basic indicators

For consistency reasons the data used in the table below are taken from official UN publications.

DEMOGRAPHIC DATA	YEAR	ESTIMATE	SOURCE
Total population (thousands)	2004	3,912	UN population division database
Female population aged 15-24 (thousands)	2004	409	UN population division database
Population aged 15-49 (thousands)	2004	1,784	UN population division database
Annual population growth rate (%)	1992-2002	2.1	UN population division database
% of population in urban areas	2003	42.5	UN population division database
Average annual growth rate of urban population	2000-2005	2.5	UN population division database
Crude birth rate (births per 1,000 pop.)	2004	37.3	UN population division database
Crude death rate (deaths per 1,000 pop.)	2004	22.3	UN population division database
Maternal mortality rate (per 100,000 live births)	2000	1100	WHO (WHR2004)/UNICEF
Life expectancy at birth (years)	2002	42.9	World Health Report 2004, WHO
Total fertility rate	2002	5	World Health Report 2004, WHO
Infant mortality rate (per 1,000 live births)	2000	120	World Health Report 2004, WHO
Under 5 mortality rate (per 1,000 live births)	2000	179	World Health Report 2004, WHO

SOCIO-ECONOMIC DATA	YEAR	ESTIMATE	SOURCE
Gross national income, ppp, per capita (Int.\$)	2002	1,190	World Bank
Gross domestic product, per capita % growth	2001-2002	2.6	World Bank
Per capita total expenditure on health (Int.\$)	2001	58	World Health Report 2004, WHO
General government expenditure on health as % of total expenditure on health	2001	51.2	World Health Report 2004, WHO
Total adult illiteracy rate	2000	53.3	UNESCO
Adult male illiteracy rate	2000	40.3	UNESCO
Adult female illiteracy rate	2000	65.1	UNESCO
Gross primary school enrolment ratio, male	2000/2001	89	UNESCO
Gross primary school enrolment ratio, female	2000/2001	61	UNESCO
Gross secondary school enrolment ratio, male	2000/2001	not available	UNESCO
Gross secondary school enrolment ratio, female	2000/2001	not available	UNESCO

Contact address

UNAIDS/WHO Working Group on Global
HIV/AIDS and STI Surveillance
20, Avenue Appia
CH - 1211 Geneva 27
Switzerland
Fax: +41-22-791-4834

email: hivstrategicinfo@who.int or
estimates@unaids.org

website: <http://www.who.int/hiv>

<http://www.unaids.org>

Extracts of the information contained in these fact sheets may be reviewed, reproduced or translated for research or private study but not for sale or for use in conjunction with commercial purposes. Any use of information in these fact sheets should be accompanied by the following acknowledgment "UNAIDS/WHO epidemiological fact sheets on HIV/AIDS and Sexually Transmitted Infections, 2004 Update".

HIV prevalence in different populations

This section contains information about HIV prevalence in different populations. The data reported in the tables below are mainly based on the HIV database maintained by the United States Bureau of the Census where data from different sources, including national reports, scientific publications and international conferences are compiled. To provide a simple overview of the current situation and trends over time, summary data are given by population group, geographical area (Major Urban Areas versus Outside Major Urban Areas), and year of survey. Studies conducted in the same year are aggregated and the median prevalence rates (in percentages) are given for each of the categories. The maximum and minimum prevalence rates observed, as well as the total number of surveys/sentinel sites, are provided with the median, to give an overview of the diversity of HIV-prevalence results in a given population within the country. Data by sentinel site or specific study from which the medians were calculated are printed at the end of this fact sheet.

The differentiation between the two geographical areas Major Urban Areas and Outside Major Urban Areas is not based on strict criteria, such as the number of inhabitants. For most countries, Major Urban Areas were considered to be the capital city and - where applicable - other metropolitan areas with similar socio-economic patterns. The term Outside Major Urban Areas considers that most sentinel sites are not located in strictly rural areas, even if they are located in somewhat rural districts.

HIV sentinel surveillance*

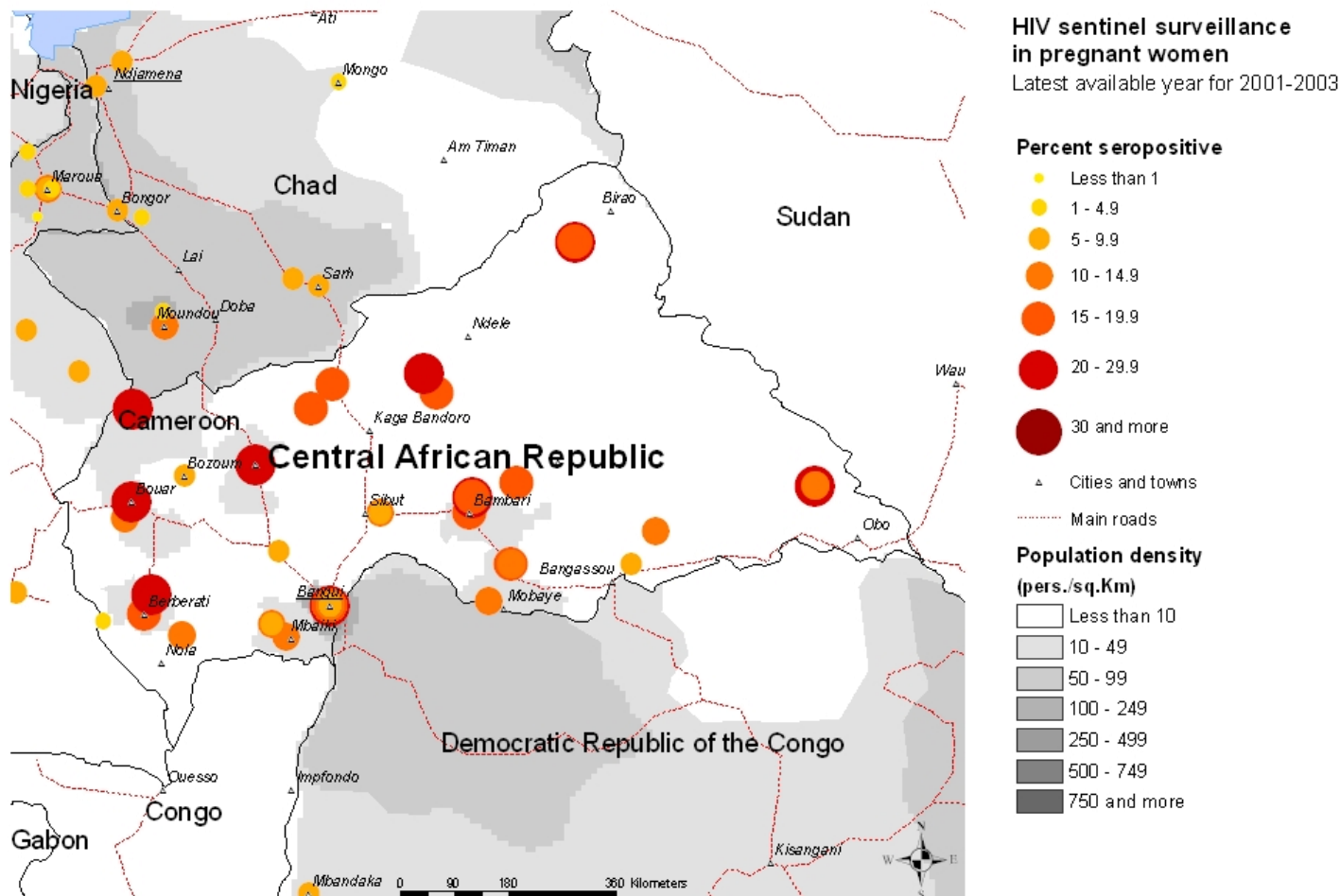
Group	Area		1987	1988	1989	1990	1991	1992	1993	1994	1995	1996	1997	1998	1999	2000	2001	2002	2003	
Pregnant women	Major urban areas	N-Sites	1.00	1.00	1.00	3.00			1.00	2.00	2.00	3.00	3.00						11.00	
		Minimum	5.20	6.90	8.00	6.00			16.00	5.33	6.40	8.80	10.80						7.00	
		Median	5.20	6.90	8.00	6.78			16.00	9.33	10.40	11.60	12.80						15.00	
		Maximum	5.20	6.90	8.00	7.90			16.00	13.33	14.40	14.80	15.20						21.00	
	Outside major urban areas	N-Sites			1.00	6.00	4.00	3.00	7.00	9.00	10.00	10.00	8.00							37.00
		Minimum			0.03	1.56	3.00	3.70	6.50	2.67	6.88	1.60	5.33							4.00
		Median			0.03	6.47	8.04	5.00	7.70	10.00	12.20	13.70	12.20							15.00
		Maximum			0.03	7.70	9.09	7.60	13.50	16.67	20.00	20.00	22.00							28.00
Sex workers	Major urban areas	N-Sites	1.00		1.00															
		Minimum	13.60		18.90															
		Median	13.60		18.90															
		Maximum	13.60		18.90															
Injecting drug users	Major urban areas	N-Sites			2.00	1.00		1.00	1.00	2.00	3.00	2.00	2.00		1.00			1.00		
		Minimum			14.06	16.45		30.00	31.00	9.30	22.00	14.00	16.00		27.86			26.33		
		Median			17.55	16.45		30.00	31.00	17.31	28.82	19.00	22.38		27.86			26.33		
		Maximum			21.05	16.45		30.00	31.00	25.32	34.01	24.00	28.77		27.86			26.33		
	Outside major urban areas	N-Sites			6.00	2.00	2.00	1.00	3.00	4.00	4.00	2.00								
		Minimum			16.07	15.29	28.00	21.50	26.74	18.90	27.30	25.89								
		Median			18.67	18.64	29.70	21.50	30.38	40.50	34.65	26.61								
		Maximum			22.95	22.00	31.40	21.50	30.67	48.24	46.10	27.33								
Men having sex with men	Major urban areas	N-Sites	1.00	1.00		1.00			1.00	1.00			1.00							
		Minimum	27.70	30.00		37.72			68.70	62.05			82.00							
		Median	27.70	30.00		37.72			68.70	62.05			82.00							
		Maximum	27.70	30.00		37.72			68.70	62.05			82.00							

*Detailed data by site can be found in the Annex.

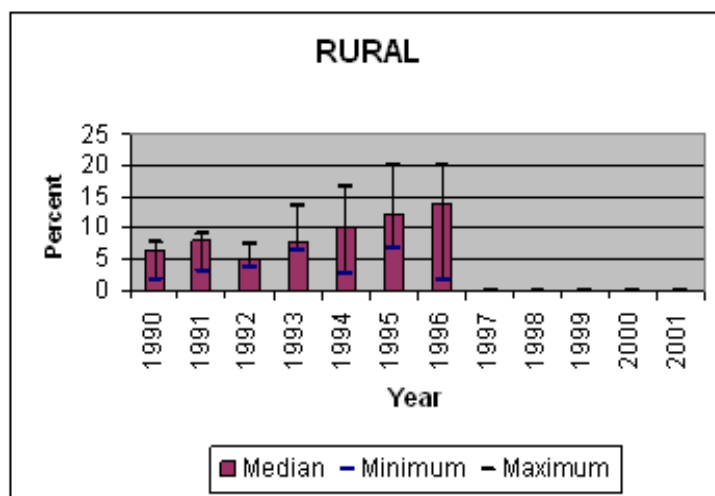
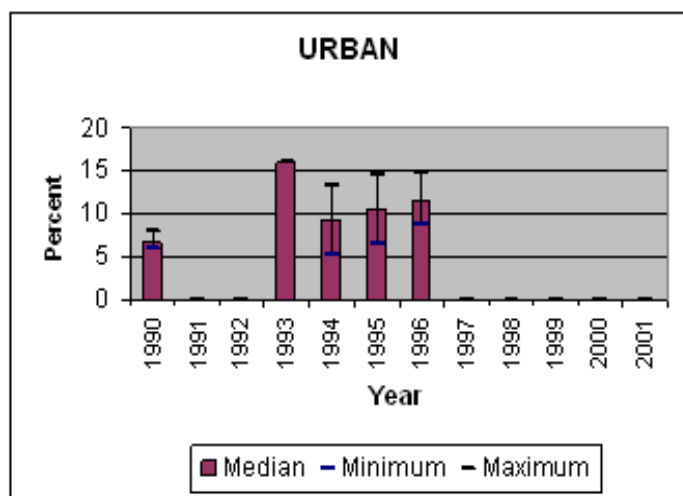
Maps & charts

Mapping the geographical distribution of HIV prevalence among different population groups may assist in interpreting both the national coverage of the HIV surveillance system as well in explaining differences in levels of prevalence. The UNAIDS/WHO Working Group on Global HIV/AIDS and STI Surveillance, in collaboration with the WHO Public Health Mapping Team, Communicable Diseases, is producing maps showing the location and HIV prevalence in relation to population density, major urban areas and communication routes. For generalized epidemics, these maps show the location of prevalence of antenatal surveillance sites.

Trends in antenatal sentinel surveillance for higher prevalence countries, or in prevalence among selected populations for countries with concentrated epidemics, are a new addition. These are presented for those countries where sufficient data exist.



Trends in HIV prevalence among antenatal clinic attendees



Median prevalence and ranges are shown in areas with more than one sentinel site.

The boundaries and names shown and the designations used on the map do not imply the expression of any opinion whatsoever on the part of the World Health Organization concerning the legal status of any country, territory, city or area or of its authorities, or concerning the delimitation of its frontiers or boundaries. Dotted lines on maps represent approximate border lines for which there may not yet be full agreement. WHO 2004, all rights reserved.

Reported AIDS cases

Following WHO and UNAIDS recommendations, AIDS case reporting is carried out in most countries. Data from individual AIDS cases are aggregated at the national level and sent to WHO. However, case reports come from surveillance systems of varying quality. Reporting rates vary substantially from country to country and low reporting rates are common in developing countries due to weaknesses in the health care and epidemiological systems. In addition, countries use different AIDS case definitions. A main disadvantage of AIDS case reporting is that it only provides information on transmission patterns and levels of infection approximately 5-10 years in the past, limiting its usefulness for monitoring recent HIV infections.

Despite these caveats, AIDS case reporting remains an important advocacy tool and is useful in estimating the burden of HIV-related morbidity as well as for short-term planning of health care services. AIDS case reports also provide information on the demographic and geographic characteristics of the affected population and on the relative importance of the various exposure risks. In some situations, AIDS reports can be used to estimate earlier HIV infection patterns using back-calculation. AIDS case reports and AIDS deaths have been dramatically reduced in industrialized countries with the introduction of Anti-Retroviral Therapy (ART).

1979	1980	1981	1982	1983	1984	1985	1986	1987	1988	1989	1990	1991	1992	1993	1994	1995	1996	1997	1998
0	0	0	0	0	0	0	0	108	622	432	1312	840	636	290	50	649	2077	0	
1999	2000	2001	2002	2003	Total		UNK	Date of last report											
					7016			5/30/1997											

Curable sexually transmitted infections (STIs)

The predominant mode of transmission of both HIV and other STIs is sexual intercourse. Measures for preventing sexual transmission of HIV and STIs are the same, as are the target audiences for interventions. In addition, strong evidence supports several biological mechanisms through which STIs facilitate HIV transmission by increasing both HIV infectiousness and HIV susceptibility. Thus, detection and treatment of individuals with STIs is an important part of an HIV control strategy. In summary, if the incidence/prevalence of STIs is high in a country, then there is the possibility of high rates of sexual transmission of HIV. Monitoring trends in STIs provides valuable insight into the likelihood of the importance of sexual transmission of HIV within a country, and is part of second generation surveillance. These trends also assist in assessing the impact of behavioural interventions, such as delaying sexual debut, reducing the number of sex partners and promoting condom use.

Clinical services offering STI care are an important access point for people at high risk for both STIs and HIV. Identifying people with STIs allows for not only the benefit of treating the STI, but for prevention education, HIV testing, identifying HIV-infected persons in need of care, and partner notification for STIs or HIV infection. Consequently, monitoring different components of STI prevention and control can also provide information on HIV prevention and control activities within a country.

STI syndromes

Reported cases	1996	1997	1998	1999	2000	2001	2002	2003	Incidence 2003
----------------	------	------	------	------	------	------	------	------	----------------

Comments:

Source:

Syphilis prevalence, women

Percent of blood samples taken from pregnant women aged 15-49 that test positive for syphilis - positive reaginic and treponemal test-during routine screening at selected antenatal clinics.

Year	Area	Rate	Range
------	------	------	-------

Comments:

Source:

Estimated prevalence of curable STIs among female sex workers

- Chlamydia

Year	Area	Rate	Range
------	------	------	-------

Comments:

Source:

- Gonorrhoea

Year	Area	Rate	Range
------	------	------	-------

Comments:

Source:

Estimated prevalence of curable STIs among female sex workers (continued)**- Syphilis**

Year	Area	Rate	Range
------	------	------	-------

Comments:

Source:

- Trichomoniasis

Year	Area	Rate	Range
------	------	------	-------

Comments:

Source:

Health service and care indicators

HIV prevention strategies depend on the twin efforts of care and support for those living with HIV or AIDS, and targeted prevention for all people at risk or vulnerable to the infection. It is difficult to capture such a large range of activities with one or just a few indicators. However, a set of well-established health care indicators may help to identify general strengths and weaknesses of health systems. Specific indicators, such as access to testing and blood screening for HIV, help to measure the capacity of health services to respond to HIV/AIDS - related issues.

Access to health care

Indicators	Year	Estimate	Source
% of population with access to health services - total			
% of population with access to health services - urban			
% of population with access to health services - rural			
Contraceptive prevalence rate (%)	1990-1999	15	UNICEF/UNPOP
Percentage of contraceptive users using condoms			
% of births attended by skilled health personnel	2000	44	WHO
% of 1-yr-old children fully immunized - DPT	2002	40	WHO/UNICEF
% of 1-yr-old children fully immunized - Measles	2001	35	WHO/UNICEF
% of ANC clinics where HIV testing is available			

Number of adults (15-49) with advanced HIV infection receiving ARV therapy as of June 2004

Adults on treatment

Number: 100

Source: WHO

Estimated number of adults (15-49) in need of treatment in 2003

Adults needing treatment

Number: 39,000

Source: WHO/UNAIDS

Coverage of HIV testing and counselling

Number of public and NGO services providing testing and counselling services.

Year	Area	N=
------	------	----

Comments:

Source:

Knowledge and behaviour

In most countries the HIV epidemic is driven by behaviours (e.g.: multiple sexual partners, injecting drug use) that expose individuals to the risk of infection. Information on knowledge and on the level and intensity of risk behaviour related to HIV/AIDS is essential in identifying populations most at risk for HIV infection and in better understanding the dynamics of the epidemic. It is also critical information in assessing changes over time as a result of prevention efforts. One of the main goals of the 2nd generation HIV surveillance systems is the promotion of a standard set of indicators defined in the National Guide (Source: National AIDS Programmes, A Guide to Monitoring and Evaluation, UNAIDS/00.17) and regular behavioural surveys in order to monitor trends in behaviours and to target interventions.

The indicators on knowledge and misconceptions are an important prerequisite for prevention programmes to focus on increasing people's knowledge about sexual transmission, and, to overcome the misconceptions that act as a disincentive to behaviour change. Indicators on sexual behaviour and the promotion of safer sexual behaviour are at the core of AIDS programmes, particularly with young people who are not yet sexually active or are embarking on their sexual lives, and who are more amenable to behavioural change than adults. Finally, higher risk male-male sex reports on unprotected anal intercourse, the highest risk behaviour for HIV among men who have sex with men.

Knowledge of HIV prevention methods

Prevention indicator: Percentage of young people 15-24 who both correctly identify two ways of preventing the sexual transmission of HIV and who reject three misconceptions about HIV transmission.

Year	Male	Female
2000		5

Comments:

Source: MICS

Reported condom use at last higher risk sex (young people 15-24)

Prevention indicator: Proportion of young people reporting the use of a condom during sex with a non-regular partner.

Year	Male	Female

Comments: For this indicator only data will be shown if they were collected after 1998.

Source:

Age-mixing in sexual partnerships among young women

The proportion of young women who have had sex in the last 12 months with a partner who is 10 or more years older than themselves.

Year	Area	Age group	Male	Female	All

Comments:

Source:

Reported non-regular sexual partnerships

Prevention indicator: Proportion of young people 15-24 having at least one sex partner other than a regular partner in the last 12 months.

Year	Male	Female

Comments:

Source:

Knowledge and behaviour (continued)Ever used a condom

Percentage of people who ever used a condom.

Year	Area	Age group	Male	Female	All
------	------	-----------	------	--------	-----

Comments:

Source:

Adolescent pregnancy

Percentage of teenagers 15-19 who are mothers or pregnant with their first child.

Year	Percentage
------	------------

Comments:

Source:

Age at first sexual experience

Proportion of 15-19 year olds who have had sex before age 15.

Year	Male	Female
------	------	--------

Comments:

Source:

Prevention indicators

Male and female condoms are the only technology available that can prevent sexual transmission of HIV and other STIs. Persons exposing themselves to the risk of sexual transmission of HIV should have consistent access to high quality condoms. AIDS Programs implement activities to increase both availability of and access to condoms. These activities should be monitored and have resources directed to problem areas. The indicator below highlights the availability of condoms. However, even if condoms are widely available, this does not mean that individuals can or do access them.

Condom availability nationwide

Total number of condoms available for distribution nationwide during the preceding 12 months, divided by the total population aged 15-49.

Year	N	Rate
------	---	------

Comments:

Source:

Prevention of mother-to-child transmission (MTCT) nationwide

Percentage of women who were counselled during antenatal care for their most recent pregnancy, accepted an offer of testing and received their test results, of all women who were pregnant at any time in the preceding two years.

Year	N	Rate
------	---	------

Comments:

Source:

Blood safety programs aim to ensure that the majority of blood units are screened for HIV and other infectious agents. This indicator gives an idea of the overall percentage of blood units that have been screened to high enough standards that they can confidently be declared free of HIV.

Screening of blood transfusions nationwide

Percentage of blood units transfused in the last 12 months that have been adequately screened for HIV according to national or WHO guidelines.

Year	N	Rate
------	---	------

Comments:

Source:

Sources

Data presented in this Epidemiological Fact Sheet come from several sources, including global, regional and country reports, published documents and articles, posters and presentations at international conferences, and estimates produced by UNAIDS, WHO and other United Nations agencies. This section contains a list of the more relevant sources used for the preparation of the Fact Sheet. Where available, it also lists selected national Web sites where additional information on HIV/AIDS and STI are presented and regularly updated. However, UNAIDS and WHO do not warrant that the information in these sites is complete and correct and shall not be liable whatsoever for any damages incurred as a result of their use.

Breton, G., Y. Service, E. Kassa-Kelembo, et al. 1999 Tuberculose et VIH: 3 Annees D'Experience d'un Service de Medecine a Bangui (Republique Centrafricaine) XI International Conference on AIDS and STDs in Africa, Lusaka, Zambia, 9/12-16, Abstract 14PT55-36.

Cathebras, P., J. A. Vohito, M. L. Yete, et al. 1988 Tuberculosis and Human Immunodeficiency Virus Infection in the Central African Republic *Med Trop (Mars)*, 1988, vol. 48, no. 4, pps. 401-407, Abstract in National Library of Medicine: Internet Grateful Med. V2.6.3, MED/89126898.

CAR Ministry of Public Health and Social Affairs 1990 Resultats de la Premiere Phase de la Surveillance Epidemiologique par Postes Sentinelles Ministere de la Sante Publique et des Affaires Sociales Direction Generale de la Sante Publique Programme National de Lutte Contre le SIDA.

CAR Ministry of Public Health and Social Affairs 1991 Rapport de Surveillance du VIH par Reseau Sentinelle Ministere de la Sante Publique et des Affaires Sociales Direction Generale de la Sante Publique, Direction de la Medecine Preventive et des Grandes Endemies, Programme National de Lutte Contre le SIDA.

Gresenguet, G., P. Somse, M. C. Georges-Courbot, et al. 1988 Sero-Prevalence of HIV Infection in Central Africa Over a Three Year Period (1985-1987) IV International Conference on AIDS, Stockholm, 6/13-14, Poster 5032.

Georges, A. J., M. C. Georges-Courbot, P. M. V. Martin, et al. 1989 Infection and Morbidity due to HIV in Central African Republic IV Internat. Conf.: AIDS and Assoc. Cancers in Africa, Marseille, Oct. 18-20, Poster 077.

Gresenguet, G., L. Belec, P. M. V. Martin, et al. 1991 Seroprevalence de l'Infection a VIH1 au Sein des Consultants de la Clinique des Maladies Sexuellement Transmissibles de ... *Bulletin de la Societe de Pathologie Exotique*, vol. 84, no. 3, pp. 240-246.

Garin, B., B. Di Costanzo, E. Kassa-Kelembho, et al. 1993 Role de la Tuberculose et de ses Formes Resistantes dans l'Infection a VIH/SIDA en Republique Centrafricaine VIII International Conference on AIDS in Africa, Marrakech, Morocco, 12/12-16, Session T.O.P.033.

Gresenguet, G., J. K. Kreiss, M. K. Chapko, et al. 1997 HIV Infection and Vaginal Douching in Central Africa *AIDS*, vol. 11, no. 1, pp. 101-106.

Garin, B., P. Glaziou, E. Kassa-Kekembho, et al. 1997 High Mortality Rates in a Tuberculosis Cohort Study in Bangui, Central Africa Republic Xth International Conference on AIDS and STD in Africa Abidjan, Cote d'Ivoire, 12/7-11, Abstract B.1113.

Lesbordes, J. L., C. Pichoud, L. Vitvitski, et al. 1989 Les Marqueurs des Hepatites a VHB et VHD Facteurs de Risque de l'Infection a VIH et du Sida a Bangui IV Internat. Conf.: AIDS and Assoc. Cancers in Africa, Marseille, Oct. 18-20, Poster 178.

Massanga, M., J. Ndoyo, D. J. Hu, et al. 1996 A Highly Heterogeneous HIV-1 Epidemic in the Central African Republic *Emerging Infectious Diseases*, vol. 2, no. 3, pp. 222-224.

Mattera, D., J. Mazi, M. Massanga, et al. 1997 Evolution de l'Epidemie a VIH-SIDA en Republique Centrafricaine Entre 1994 et 1996 a Travers la Serosurveillance Sentinelle ... Xth International Conference on AIDS and STD in Africa Abidjan, Cote d'Ivoire, 12/7-11, Poster B.1166.

Mbopi Keou, F. X., G. Gresenguet, P. Mayaud, et al. 1999 Major Genital Carriage and Replication of Herpes Simplex Virus Type 2 in HIV-1 Infected Women Living in Central Africa XI International Conference on AIDS and STDs in Africa, Lusaka, Zambia, 9/12-16, Abstract 14ET5-3.

Mbopikeou, F. 2001 Association of Genital Replication of HSV-2 with Increasing HIV-1 RNA, but not HIV-1 Proviral DNA Genital Shedding in HIV ... XIIth International Conference on AIDS and STDs in Africa, Ouagadougou, Burkina Faso, 12/9-13, Abstract 10BT4-3.

Ministry of Health 1997 Rapport de la Serosurveillance Sentinelle de l'Infection a VIH en Republique Centrafricaine: Annee 1997 National AIDS Programme.

Matsika-Claquin, M. D. 2002 Cartographie de l'Infection a VIH en Republique Centrafricaine Institut Pasteur de Bangui, decembre, rapport final.

Nuwaha, F. 1998 Contemporary Treatment of Tuberculosis in HIV Prevalent Countries in Sub-Saharan Africa *East African Medical Journal*, vol. 75, no. 6, pp. 358-363.

Pascal, B. 1995 Situation Epidemiologique du SIDA en Republique Centrafricaine *Info SIDA*, no. 004, fevrier, pp. 3-6.

Somse, P., A. J. Georges, R. M. Siopathis, et al. 1989 Les Aspects Epidemiologiques des Affections Liees Aux VIH 1 et 2 en Republique Centrafricaine V International Conference on AIDS, Montreal, 6/4-9, Poster W.G.O. 28.

Websites: www.aids.africa.com

Annex: HIV surveillance by site

Group	Area	1987	1988	1989	1990	1991	1992	1993	1994	1995	1996	1997	1998	1999	2000	2001	2002	2003			
Pregnant women	Major urban areas	Bangui	5.20	6.90	8.00			16.00													
		Boy-Rabe, Bangui																		14.00	
		CSSU, Bangui																		16.00	
		CSU Begoua, Bangui																		9.00	
		CSU Bimbo, Bangui								5.33	6.40	8.80	15.20							9.00	
		CSU Castor, Bangui				7.90				13.33	14.40	14.80	12.80								16.00
		CSU Gobongo, Bangui																			21.00
		CSU Lakouanga, Bangui																			18.00
		CSU Malimaka, Bangui																			15.00
		CSU Mamadou M'Baiki, Bangui				6.00															16.00
	CSU Ouango Bangui, Bangui																			13.00	
	CSU Petevo, Bangui				6.78							11.60	10.80							7.00	
	Outside major urban areas	Bambari				7.70	9.09			13.33	14.40	15.60									
		Bangassou								10.00	19.20	15.30									
		Batangafa, Batangafa (rural)						7.60	6.50												
		Berberati				7.40				10.67	17.46	19.90									
		Bossangoa (1), Bossangoa				5.80	7.00	5.00	7.50	6.08	9.60	9.20									
		Bossangoa (2), Bossangoa					9.09														
		Bouar				6.70						20.00	20.00								
		Bouca								13.50											
		Bozoum								7.70	13.25	8.18	13.60								
		Bria									16.67	18.40	12.80								
		CS Alindao & Elim, Basse-Kotto Pref																			18.00
		CS Amdafok, Vakaga Prefecture/ rura																			28.00
		CS Baboua, Nana-Mambere Prefecture/																			11.00
		CS Bamingui, Bamingui-Bangorou Pref																			27.00
		CS Batangafa, Batangafa (rural)																			15.00
		CS Bayanga, Sangha-Mbaere Prefectur																			13.00
		CS Boda, Lobaye Prefecture/ rural																			9.00
		CS Bossebele, Ombella-Mpoko Prefec																			9.00
		CS Bossongo, Lobaye Prefecture/ rur																			11.00
		CS Dekoa, Kemo Prefecture/ rural																			7.00
		CS Gamboula, Gamboula (rural)																			4.00
CS Kabo, Kabo (rural)																				18.00	
CS Kembe, Basse-Kotto Prefecture/ r																				14.00	
CS Kouango, Ouaka Prefecture/ rural																			21.00		
CS Mboki, Haut-Mbomou Prefecture/ r																			11.00		
CS Mbres, Nana-Grebizi Prefecture/ rural																			15.00		
CS Ngaoundaye, Ngaoundaye (rural)																			22.00		
CS Niem, Nana-Mambere Prefecture/ r																			11.00		
CS Paoua, Paoua (rural)																			17.00		
CS Rafai, Mbomou Prefecture/ rural																			10.00		
CS Zemio, Haut-Mbomou Prefe																			21.00		

Group	Area	1987	1988	1989	1990	1991	1992	1993	1994	1995	1996	1997	1998	1999	2000	2001	2002	2003		
Pregnant women	Outside major urban areas	CSEB, Gamboula (rural)			1.56															
		Gamboula, Gamboula (rural)			0.03		3.00	3.70		2.67	6.88	1.60								
		Hop. Bambari, Bambari											22.00					18.00		
		Hop. Bangassou, Bangassou											11.60					9.00		
		Hop. Berberati, Berberati											12.99					17.00		
		Hop. Birao, Vakaga Prefecture/ urba																	15.00	
		Hop. Bossangoa, Bossangoa												13.20					20.00	
		Hop. Bouar, Bouar												12.80					20.00	
		Hop. Bozoum, Bozoum																	9.00	
		Hop. Bria, Bria																	19.00	
		Hop. Carnot, Mambere Kadei Prefectu																	22.00	
		Hop. Gamboula, Gamboula (rural)												6.29						
		Hop. Ippy, Ouaka Prefecture/ rural																	16.00	
		Hop. Kaga-Bandoro, Nana-Grebizi Prefecture/ urban																	15.00	
		Hop. M'Baiki, M'Baiki													7.63				11.00	
		Hop. Mobaye, Mobaye													5.33				10.00	
		Hop. Ndele, Bamingui-Bangorou Pref.																	18.00	
		Hop. Nola, Sangha-Mbaere Prefecture																	11.00	
		Hop. Sibut, Kemo Prefecture/ urban																	10.00	
							6.25													
								7.40												
									5.33	7.56	13.80									
									6.00	10.00	10.30									
								8.69												
								9.69												
Sex workers	Major urban areas	Bangui	13.60	18.90																
Injecting drug users																				
STI patients	Major urban areas	Bangui		17.55	16.45		30.00	31.00	25.32	34.01				27.86		26.33				
		CRMST, Bangui									28.82	24.00	28.77							
		CSS, Bangui							9.30	22.00	14.00	16.00								
	Outside major urban areas	Bambari				21.47	15.29	31.40												
		Berberati				20.00														
		Bossangoa (1), Bossangoa				16.50	22.00	28.00	21.50											
		Bouar				16.07														
		Hop. Bambari, Bambari								26.74	40.00	36.00	25.89							
		Hop. Bouar, Bouar				17.33					48.24	46.10	27.33							
		Hop. Bozoum, Bozoum								30.67	18.90	33.30								
Hop. Bria, Bria								30.38	41.00	27.30										
Men having sex with men																				
Tuberculosis patients	Major urban areas	Bangui	27.70	30.00	37.72			68.70	62.05			82.00								