

2004  
Update



## Burkina Faso

**EPIDEMIOLOGICAL FACT SHEETS**  
ON HIV/AIDS AND SEXUALLY TRANSMITTED INFECTIONS



Joint United Nations Programme on HIV/AIDS

**UNAIDS**

UNHCR • UNICEF • WFP • UNDP • UNFPA  
UNODC • ILO • UNESCO • WHO • WORLD BANK



World Health  
Organization

## HIV/AIDS estimates

In 2003 and during the first quarter of 2004, UNAIDS and WHO worked closely with national governments and research institutions to recalculate current estimates on people living with HIV/AIDS. These calculations are based on the previously published estimates for 1999 and 2001 and recent trends in HIV/AIDS surveillance in various populations. A methodology developed in collaboration with an international group of experts was used to calculate the new estimates on prevalence and incidence of HIV and AIDS deaths, as well as the number of children infected through mother-to-child transmission of HIV. Different approaches were used to estimate HIV prevalence in countries with low-level, concentrated or generalised epidemics. The current estimates do not claim to be an exact count of infections. Rather, they use a methodology that has thus far proved accurate in producing estimates that give a good indication of the magnitude of the epidemic in individual countries. However, these estimates are constantly being revised as countries improve their surveillance systems and collect more information.

Adults in this report are defined as women and men aged 15 to 49. This age range covers people in their most sexually active years. While the risk of HIV infection obviously continues beyond the age of 50, the vast majority of those who engage in substantial risk behaviours are likely to be infected by this age. The 15 to 49 range was used as the denominator in calculating adult HIV prevalence.

### Estimated number of adults and children living with HIV/AIDS, end of 2003

These estimates include all people with HIV infection, whether or not they have developed symptoms of AIDS, alive at the end of 2003:

Adults and children	300,000		
Low estimate	190,000		
High estimate	470,000		
Adults (15-49)	270,000	Adult rate (%)	4.2
Low estimate	170,000	Low estimate	2.7
High estimate	420,000	High estimate	6.5
Children (0-15)	31,000		
Low estimate	18,000		
High estimate	56,000		
Women (15-49)	150,000		
Low estimate	98,000		
High estimate	240,000		

### Estimated number of deaths due to AIDS

Estimated number of adults and children who died of AIDS during 2003:

Deaths in 2003	29,000
Low estimate	18,000
High estimate	47,000

### Estimated number of orphans

Estimated number of children who have lost their mother or father or both parents to AIDS and who were alive and under age 17 at the end of 2003:

Current living orphans	260,000
Low estimate	180,000
High estimate	370,000

## Assessment of the epidemiological situation 2004

HIV sentinel surveillance among women attending antenatal care clinics has been conducted annually at five sites, located in five out of the eight regions, since 1997. In 2000, a survey of HIV prevalence was conducted among sex workers in Bobo-Dioulasso.

In 2000, 'seaters' sex workers in Bobo-Dioulasso had an HIV prevalence of 55% while 'roamers' sex workers had a rate of 31%.

In 2001, the median HIV prevalence among young women aged 15-24 years attending antenatal care clinics was 4.1%, ranging from 2.1% in Tenkodogo to 4.8% in Bobo-Dioulasso and Gaoua.

In 2002, the median HIV prevalence among women attending antenatal care clinics at the five surveillance sites was 4.6%, prevalence ranging from 2.1% in Tenkodogo to 6.5% in Bobo-Dioulasso. Median HIV prevalence among attendees among the same antenatal care clinics in rural areas remained stable between 1998 and 2002, while median prevalence among the same antenatal care clinics in urban areas decreased from 8.2% to 5.6%.

In 2004 a National Population Based survey linked to DHS found overall 1.9% prevalence with big differences among urban (3.1%) versus rural areas (1.0%). There were also more infected women than men 3.4 % among female participants versus 2.7% among males.

## UNAIDS/WHO Working Group on Global HIV/AIDS and STI Surveillance

Global Surveillance of HIV/AIDS and sexually transmitted infections (STIs) is a joint effort of WHO and UNAIDS. The UNAIDS/WHO Working Group on Global HIV/AIDS and STI Surveillance, initiated in November 1996, guides respective activities. The primary objective of the Working Group is to strengthen national, regional and global structures and networks for improved monitoring and surveillance of HIV/AIDS and STIs. For this purpose, the Working Group collaborates closely with national AIDS programmes and a number of national and international experts and institutions. The goal of this collaboration is to compile the best information available and to improve the quality of data needed for informed decision-making and planning at national, regional, and global levels. The Epidemiological Fact Sheets are one of the products of this close and fruitful collaboration across the globe.

Within this framework, the Fact Sheets collate the most recent country-specific data on HIV/AIDS prevalence and incidence, together with information on behaviours (e.g. casual sex and condom use) which can spur or stem the transmission of HIV.

Not unexpectedly, information on all of the agreed upon indicators was not available for many countries in 2003. However, these updated Fact Sheets do contain a wealth of information which allows identification of strengths in currently existing programmes and comparisons between countries and regions. The Fact Sheets may also be instrumental in identifying potential partners when planning and implementing improved surveillance systems.

The fact sheets can be only as good as information made available to the UNAIDS/WHO Working Group on Global HIV/AIDS and STI Surveillance. Therefore, the Working Group would like to encourage all programme managers as well as national and international experts to communicate additional information to them whenever such information becomes available. The Working Group also welcomes any suggestions for additional indicators or information proven to be useful in national or international decision-making and planning.

## Basic indicators

For consistency reasons the data used in the table below are taken from official UN publications.

DEMOGRAPHIC DATA	YEAR	ESTIMATE	SOURCE
Total population (thousands)	2004	13,393	UN population division database
Female population aged 15-24 (thousands)	2004	1,385	UN population division database
Population aged 15-49 (thousands)	2004	5,865	UN population division database
Annual population growth rate (%)	1992-2002	2.9	UN population division database
% of population in urban areas	2003	17.6	UN population division database
Average annual growth rate of urban population	2000-2005	5.0	UN population division database
Crude birth rate (births per 1,000 pop.)	2004	47.5	UN population division database
Crude death rate (deaths per 1,000 pop.)	2004	17	UN population division database
Maternal mortality rate (per 100,000 live births)	2000	1000	WHO (WHR2004)/UNICEF
Life expectancy at birth (years)	2002	41.7	World Health Report 2004, WHO
Total fertility rate	2002	6.7	World Health Report 2004, WHO
Infant mortality rate (per 1,000 live births)	2000	117	World Health Report 2004, WHO
Under 5 mortality rate (per 1,000 live births)	2000	225	World Health Report 2004, WHO

SOCIO-ECONOMIC DATA	YEAR	ESTIMATE	SOURCE
Gross national income, ppp, per capita (Int.\$)	2002	1,010	World Bank
Gross domestic product, per capita % growth	2001-2002	3.1	World Bank
Per capita total expenditure on health (Int.\$)	2001	27	World Health Report 2004, WHO
General government expenditure on health as % of total expenditure on health	2001	60.1	World Health Report 2004, WHO
Total adult illiteracy rate	2000	76.1	UNESCO
Adult male illiteracy rate	2000	66.1	UNESCO
Adult female illiteracy rate	2000	85.9	UNESCO
Gross primary school enrolment ratio, male	2000/2001	52	UNESCO
Gross primary school enrolment ratio, female	2000/2001	37	UNESCO
Gross secondary school enrolment ratio, male	2000/2001	12	UNESCO
Gross secondary school enrolment ratio, female	2000/2001	8	UNESCO

### Contact address

UNAIDS/WHO Working Group on Global  
HIV/AIDS and STI Surveillance  
20, Avenue Appia  
CH - 1211 Geneva 27  
Switzerland  
Fax: +41-22-791-4834

email: [hivstrategicinfo@who.int](mailto:hivstrategicinfo@who.int) or  
[estimates@unaids.org](mailto:estimates@unaids.org)

website: <http://www.who.int/hiv>

<http://www.unaids.org>

Extracts of the information contained in these fact sheets may be reviewed, reproduced or translated for research or private study but not for sale or for use in conjunction with commercial purposes. Any use of information in these fact sheets should be accompanied by the following acknowledgment "UNAIDS/WHO epidemiological fact sheets on HIV/AIDS and Sexually Transmitted Infections, 2004 Update".

## HIV prevalence in different populations

This section contains information about HIV prevalence in different populations. The data reported in the tables below are mainly based on the HIV database maintained by the United States Bureau of the Census where data from different sources, including national reports, scientific publications and international conferences are compiled. To provide a simple overview of the current situation and trends over time, summary data are given by population group, geographical area (Major Urban Areas versus Outside Major Urban Areas), and year of survey. Studies conducted in the same year are aggregated and the median prevalence rates (in percentages) are given for each of the categories. The maximum and minimum prevalence rates observed, as well as the total number of surveys/sentinel sites, are provided with the median, to give an overview of the diversity of HIV-prevalence results in a given population within the country. Data by sentinel site or specific study from which the medians were calculated are printed at the end of this fact sheet.

The differentiation between the two geographical areas Major Urban Areas and Outside Major Urban Areas is not based on strict criteria, such as the number of inhabitants. For most countries, Major Urban Areas were considered to be the capital city and - where applicable - other metropolitan areas with similar socio-economic patterns. The term Outside Major Urban Areas considers that most sentinel sites are not located in strictly rural areas, even if they are located in somewhat rural districts.

### HIV sentinel surveillance\*

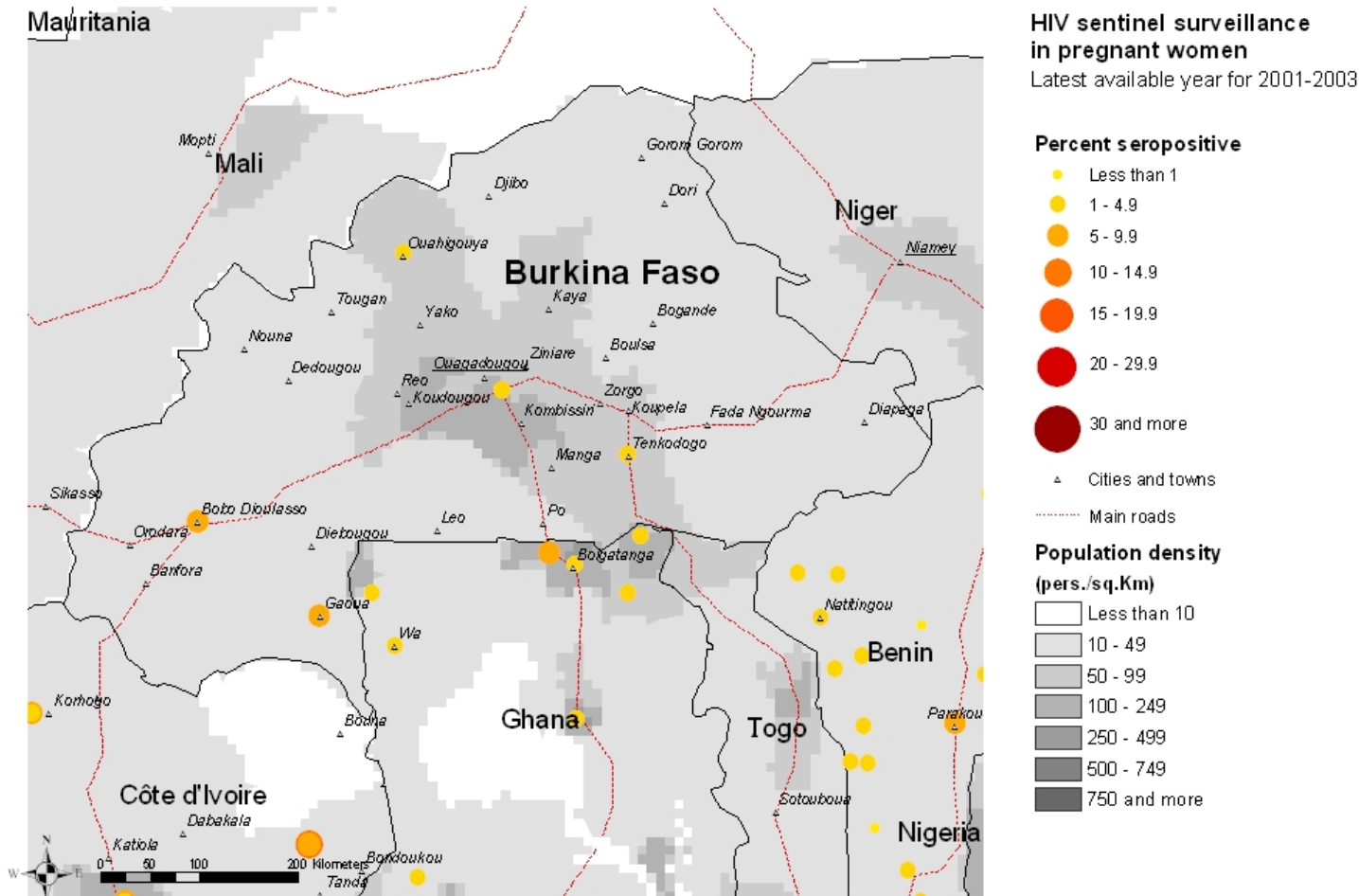
Group	Area		1987	1988	1989	1990	1991	1992	1993	1994	1995	1996	1997	1998	1999	2000	2001	2002	2003	
Pregnant women	Major urban areas	N-Sites	1.00			1.00	1.00				2.00	3.00	3.00	5.00	4.00	4.00		4.00		
		Minimum	7.50			4.90	7.80				7.50	9.16	6.36	5.90	4.60	4.80		4.40		
		Median	7.50			4.90	7.80				7.90	9.60	7.10	7.36	7.35	6.30		5.25		
		Maximum	7.50			4.90	7.80				8.30	10.00	9.70	8.30	8.40	7.20		6.00		
	Outside major urban areas	N-Sites	2.00				2.00	3.00	1.00	4.00	2.00			1.00	3.00	3.00	4.00		6.00	
		Minimum	3.10				5.00	6.60	10.80	5.10	6.50			5.29	4.00	3.80	1.50		2.12	
		Median	4.45				9.50	7.30	10.80	5.75	8.25			5.29	4.30	6.00	4.16		4.15	
		Maximum	5.80				14.00	12.50	10.80	9.70	10.00			5.29	6.60	6.00	13.41		5.90	
Sex workers	Major urban areas	N-Sites			1.00						2.00				2.00					
		Minimum			64.00							57.20				28.60				
		Median			64.00							58.20				30.75				
		Maximum			64.00							59.20				32.90				
Injecting drug users																				
STI patients	Major urban areas	N-Sites	2.00			1.00	1.00	1.00								2.00				
		Minimum	23.00			19.60	17.50	41.82								17.40				
		Median	41.00			19.60	17.50	41.82								21.95				
		Maximum	59.00			19.60	17.50	41.82								26.50				
Men having sex with men																				
Tuberculosis patients	Major urban areas	N-Sites	1.00		2.00	1.00	1.00		1.00											
		Minimum	42.00		14.00	23.50	25.80		36.62											
		Median	42.00		18.90	23.50	25.80		36.62											
		Maximum	42.00		23.80	23.50	25.80		36.62											

\*Detailed data by site can be found in the Annex.

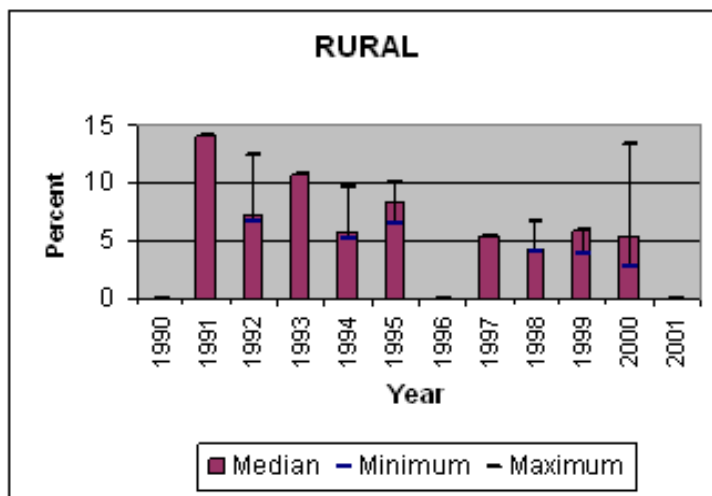
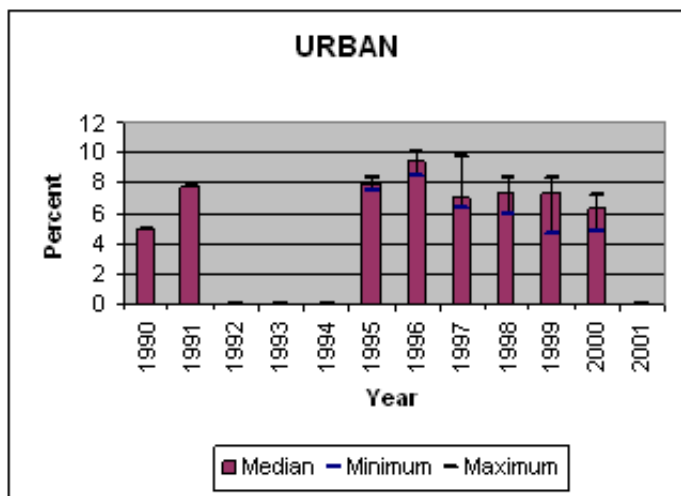
## Maps & charts

Mapping the geographical distribution of HIV prevalence among different population groups may assist in interpreting both the national coverage of the HIV surveillance system as well in explaining differences in levels of prevalence. The UNAIDS/WHO Working Group on Global HIV/AIDS and STI Surveillance, in collaboration with the WHO Public Health Mapping Team, Communicable Diseases, is producing maps showing the location and HIV prevalence in relation to population density, major urban areas and communication routes. For generalized epidemics, these maps show the location of prevalence of antenatal surveillance sites.

Trends in antenatal sentinel surveillance for higher prevalence countries, or in prevalence among selected populations for countries with concentrated epidemics, are a new addition. These are presented for those countries where sufficient data exist.



Trends in HIV prevalence among antenatal clinic attendees



Median prevalence and ranges are shown in areas with more than one sentinel site.

The boundaries and names shown and the designations used on the map do not imply the expression of any opinion whatsoever on the part of the World Health Organization concerning the legal status of any country, territory, city or area or of its authorities, or concerning the delimitation of its frontiers or boundaries. Dotted lines on maps represent approximate border lines for which there may not yet be full agreement. WHO 2004, all rights reserved.

## Reported AIDS cases

Following WHO and UNAIDS recommendations, AIDS case reporting is carried out in most countries. Data from individual AIDS cases are aggregated at the national level and sent to WHO. However, case reports come from surveillance systems of varying quality. Reporting rates vary substantially from country to country and low reporting rates are common in developing countries due to weaknesses in the health care and epidemiological systems. In addition, countries use different AIDS case definitions. A main disadvantage of AIDS case reporting is that it only provides information on transmission patterns and levels of infection approximately 5-10 years in the past, limiting its usefulness for monitoring recent HIV infections.

Despite these caveats, AIDS case reporting remains an important advocacy tool and is useful in estimating the burden of HIV-related morbidity as well as for short-term planning of health care services. AIDS case reports also provide information on the demographic and geographic characteristics of the affected population and on the relative importance of the various exposure risks. In some situations, AIDS reports can be used to estimate earlier HIV infection patterns using back-calculation. AIDS case reports and AIDS deaths have been dramatically reduced in industrialized countries with the introduction of Anti-Retroviral Therapy (ART).

1979	1980	1981	1982	1983	1984	1985	1986	1987	1988	1989	1990	1991	1992	1993	1994	1995	1996	1997	1998
0	0	0	0	0	0	0	10	21	394	351	202	835	1073	836	1892	1684	1838	2216	2166
1999	2000	2001	2002	2003	Total	UNK	Date of last report												
2031	1532	1063			19989	0	7/11/2004												

## Curable sexually transmitted infections (STIs)

The predominant mode of transmission of both HIV and other STIs is sexual intercourse. Measures for preventing sexual transmission of HIV and STIs are the same, as are the target audiences for interventions. In addition, strong evidence supports several biological mechanisms through which STIs facilitate HIV transmission by increasing both HIV infectiousness and HIV susceptibility. Thus, detection and treatment of individuals with STIs is an important part of an HIV control strategy. In summary, if the incidence/prevalence of STIs is high in a country, then there is the possibility of high rates of sexual transmission of HIV. Monitoring trends in STIs provides valuable insight into the likelihood of the importance of sexual transmission of HIV within a country, and is part of second generation surveillance. These trends also assist in assessing the impact of behavioural interventions, such as delaying sexual debut, reducing the number of sex partners and promoting condom use.

Clinical services offering STI care are an important access point for people at high risk for both STIs and HIV. Identifying people with STIs allows for not only the benefit of treating the STI, but for prevention education, HIV testing, identifying HIV-infected persons in need of care, and partner notification for STIs or HIV infection. Consequently, monitoring different components of STI prevention and control can also provide information on HIV prevention and control activities within a country.

### STI syndromes

Reported cases	1996	1997	1998	1999	2000	2001	2002	2003	Incidence 2003
Genital Ulcer		76							

**Comments:**

**Source:** Ministère de la Santé. Rétro information sur les données de serosurveillance et de cas de SIDA au Burkina Faso. 1998.

### Syphilis prevalence, women

Percent of blood samples taken from pregnant women aged 15-49 that test positive for syphilis - positive reaginic and treponemal test - during routine screening at selected antenatal clinics.

Year	Area	Rate	Range
1997-1999	Urban	0.17	0.13/0.21

**Comments:**

**Source:** Sombie I. Seroprevalence of syphilis among women attending urban antenatal clinics in Burkina Faso, 1995-8. Sex. Transm. Inf. 2000; 76: 314-316.

### Estimated prevalence of curable STIs among female sex workers

#### - Chlamydia

Year	Area	Rate	Range

**Comments:**

**Source:**

#### - Gonorrhoea

Year	Area	Rate	Range

**Comments:**

**Source:**

Estimated prevalence of curable STIs among female sex workers (continued)**- Syphilis**

Year	Area	Rate	Range
------	------	------	-------

Comments:

Source:

**- Trichomoniasis**

Year	Area	Rate	Range
------	------	------	-------

Comments:

Source:

## Health service and care indicators

HIV prevention strategies depend on the twin efforts of care and support for those living with HIV or AIDS, and targeted prevention for all people at risk or vulnerable to the infection. It is difficult to capture such a large range of activities with one or just a few indicators. However, a set of well-established health care indicators may help to identify general strengths and weaknesses of health systems. Specific indicators, such as access to testing and blood screening for HIV, help to measure the capacity of health services to respond to HIV/AIDS - related issues.

### Access to health care

Indicators	Year	Estimate	Source
% of population with access to health services - total			
% of population with access to health services - urban			
% of population with access to health services - rural			
Contraceptive prevalence rate (%)	1999	11.9	UNICEF/UNPOP
Percentage of contraceptive users using condoms			
% of births attended by skilled health personnel	2000	31	WHO
% of 1-yr-old children fully immunized - DPT	2002	41	WHO/UNICEF
% of 1-yr-old children fully immunized - Measles	2001	46	WHO/UNICEF
% of ANC clinics where HIV testing is available			

### Number of adults (15-49) with advanced HIV infection receiving ARV therapy as of June 2004

#### Adults on treatment

Number: 2,000

Source: WHO

### Estimated number of adults (15-49) in need of treatment in 2003

#### Adults needing treatment

Number: 43,000

Source: WHO/UNAIDS

### Coverage of HIV testing and counselling

Number of public and NGO services providing testing and counselling services.

Year	Area	N=
------	------	----

Comments:

Source:

## Knowledge and behaviour

In most countries the HIV epidemic is driven by behaviours (e.g.: multiple sexual partners, injecting drug use) that expose individuals to the risk of infection. Information on knowledge and on the level and intensity of risk behaviour related to HIV/AIDS is essential in identifying populations most at risk for HIV infection and in better understanding the dynamics of the epidemic. It is also critical information in assessing changes over time as a result of prevention efforts. One of the main goals of the 2nd generation HIV surveillance systems is the promotion of a standard set of indicators defined in the National Guide (Source: National AIDS Programmes, A Guide to Monitoring and Evaluation, UNAIDS/00.17) and regular behavioural surveys in order to monitor trends in behaviours and to target interventions.

The indicators on knowledge and misconceptions are an important prerequisite for prevention programmes to focus on increasing people's knowledge about sexual transmission, and, to overcome the misconceptions that act as a disincentive to behaviour change. Indicators on sexual behaviour and the promotion of safer sexual behaviour are at the core of AIDS programmes, particularly with young people who are not yet sexually active or are embarking on their sexual lives, and who are more amenable to behavioural change than adults. Finally, higher risk male-male sex reports on unprotected anal intercourse, the highest risk behaviour for HIV among men who have sex with men.

### Knowledge of HIV prevention methods

Prevention indicator: Percentage of young people 15-24 who both correctly identify two ways of preventing the sexual transmission of HIV and who reject three misconceptions about HIV transmission.

Year	Male	Female
1998		

Comments:

Source: DHS

### Reported condom use at last higher risk sex (young people 15-24)

Prevention indicator: Proportion of young people reporting the use of a condom during sex with a non-regular partner.

Year	Male	Female
1999	55	41

Comments:

Source: DHS

### Age-mixing in sexual partnerships among young women

The proportion of young women who have had sex in the last 12 months with a partner who is 10 or more years older than themselves.

Year	Area	Age group	Male	Female	All

Comments:

Source:

### Reported non-regular sexual partnerships

Prevention indicator: Proportion of young people 15-24 having at least one sex partner other than a regular partner in the last 12 months.

Year	Male	Female
1999	82	19

Comments:

Source: DHS

Knowledge and behaviour (continued)Ever used a condom

Percentage of people who ever used a condom.

Year	Area	Age group	Male	Female	All
------	------	-----------	------	--------	-----

Comments:

Source:

Adolescent pregnancy

Percentage of teenagers 15-19 who are mothers or pregnant with their first child.

Year	Percentage
------	------------

Comments:

Source:

Age at first sexual experience

Proportion of 15-19 year olds who have had sex before age 15.

Year	Male	Female
1999	8	12

Comments:

Source: DHS

## Prevention indicators

Male and female condoms are the only technology available that can prevent sexual transmission of HIV and other STIs. Persons exposing themselves to the risk of sexual transmission of HIV should have consistent access to high quality condoms. AIDS Programs implement activities to increase both availability of and access to condoms. These activities should be monitored and have resources directed to problem areas. The indicator below highlights the availability of condoms. However, even if condoms are widely available, this does not mean that individuals can or do access them.

### Condom availability nationwide

Total number of condoms available for distribution nationwide during the preceding 12 months, divided by the total population aged 15-49.

Year	N	Rate
------	---	------

Comments:

Source:

### Prevention of mother-to-child transmission (MTCT) nationwide

Percentage of women who were counselled during antenatal care for their most recent pregnancy, accepted an offer of testing and received their test results, of all women who were pregnant at any time in the preceding two years.

Year	N	Rate
------	---	------

Comments:

Source:

Blood safety programs aim to ensure that the majority of blood units are screened for HIV and other infectious agents. This indicator gives an idea of the overall percentage of blood units that have been screened to high enough standards that they can confidently be declared free of HIV.

### Screening of blood transfusions nationwide

Percentage of blood units transfused in the last 12 months that have been adequately screened for HIV according to national or WHO guidelines.

Year	N	Rate
------	---	------

Comments:

Source:

## Sources

Data presented in this Epidemiological Fact Sheet come from several sources, including global, regional and country reports, published documents and articles, posters and presentations at international conferences, and estimates produced by UNAIDS, WHO and other United Nations agencies. This section contains a list of the more relevant sources used for the preparation of the Fact Sheet. Where available, it also lists selected national Web sites where additional information on HIV/AIDS and STI are presented and regularly updated. However, UNAIDS and WHO do not warrant that the information in these sites is complete and correct and shall not be liable whatsoever for any damages incurred as a result of their use.

Burkina Faso Ministry of Health 1997 La Surveillance Epidemiologique de l'Infection a VIH, du SIDA, et des Maladies Sexuellement Transmises au Burkina Faso Ministere de la Sante, O.C.C.G.E, Ouagadougou, juin, rapport final.

Burkina Faso Ministere de la Sante 1999 Rapport Sur les Donnees de Serosurveillance Site Sentinelle et la Notification des Cas de SIDA et des MST au 31 decembre 1998 DMP/SPCNL-SIDA-MST, Mai, unpublished report.

Bazie, B., W. Traore, S. R. Tiendrebeogo, et al. 2002 Rapport Technique de Serosurveillance VIH Dans les Cinq Sites Sentinelles de Ouagadougou, Bobo-Dioulasso, Ouahigouya Presidence du Faso, Conseil National de Lutte, contre le Sida et les IST, Secretariat Permanent, Burkina Faso, Janvier, report.

Babou, B. 2003 Recapitulatif de Statistiques sur le VIH/SIDA au Burkina Faso: 2002 E-mail communication.

Cartoux, M., P. Msellati, N. Meda, et al. 1998 Attitude of Pregnant Women Towards HIV Testing in Abidjan, Cote d'Ivoire and Bobo-Dioulasso, Burkina Faso AIDS, vol. 12, no. 17, pp. 2337-2344.

Dao, B., B. Nacro, H. Dahourou, et al. 1998 Coinfection with Hepatitis B and HIV in Pregnant Women in Bobo Dioulasso, Burkina Faso 12th World AIDS Conference, Geneva, 6/28 - 7/3, Abstract 22259.

Fao, P., Y. Nebie, N. Meda, et al. 2001 Facteurs de Risque de l'Infection a VIH Chez les Femmes Enceintes dans le District de Houde Region Sanitaire de Bobo ... XIIth International Conference on AIDS and STDs in Africa, Ouagadougou, Burkina Faso, 12/9-13, Abstract 10PT5-376.

Kanki, P. J., S. M'Boup, D. Richard, et al. 1987 Human T-lymphotropic Virus Type 4 and the Human Immunodeficiency Virus in West Africa Science, vol. 236, no. 4803, pp. 827-831.

Lalle, B., K. Bocar, O. L. Hamade, et al. 1989 Epidemiological Situation and the Organization of the Effort Against AIDS in Burkina Faso Paper presented at Reunion Inter-etats Pour l'Elaboration d'un Plan de Lutte Coordonee Contre le SIDA, Bobo Dioulasso, Burkina Faso, May 22-24., pp. 1-4.

Malkin, J. E., Th. Prazuck, F. Simonnet, et al. 1989 Tuberculose et Infection a HIV a Bobo-Dioulasso (Burkina Faso) V International Conference on AIDS, Montreal, 6/4-9, Poster M.G.P. 26.

Meda, N., S. Ledru, M. Fofana, et al. 1995 Sexually Transmitted Diseases and Human Immunodeficiency Virus Infection among Women with Genital Infections in ... International Journal of STD and AIDS, vol. 6, no. 4, pp. 273-277.

Meda, N., M. T. Zoundi-Guigui, P. Van de Perre, et al. 1999 HIV Infection among Pregnant Women in Bobo-Dioulasso, Burkina Faso: Comparison of Voluntary and Blinded Seroprevalence Estimates International Journal of STD and AIDS, vol. 10, no. 11, pp. 738-740.

Meda, N., P. Msellati, L. Mandelbrot, et al. 1997 Tolerance et Acceptabilite de la Desinfection Vaginale par des Ovules de Chlorure de Benzalkonium (CdB) dans la Reduction de ... Xth International Conference on AIDS and STD in Africa Abidjan, Cote d'Ivoire, 12/7-11, Abstract B.1312.

Ouangre, A. M. Cartoux, A. Ouedraogo, et al. 1999 Prevention des MST/VIH chez les Prostituees en Afrique de l'Quest: Une Necessite de L'Elargir aux Programmes de la ... XI International Conference on AIDS and STDs in Africa, Lusaka, Zambia, 9/12-16, Abstract 14PT37-14.

Ouangre, A., N. Nagot, A. Ouedraogo, et al. 2001 Comportements Sexuels et Prevalence du VIH et des IST Chez les Professionnelles et les Non Professionnelles du Sexe ... XIIth International Conference on AIDS and STD in Africa, Ouagadougou, Burkina Faso, 12/9-13, Poster 10PT5-372.

Prazuck, T., B. Heylinck, J. M. V. Yameogo, et al. 1991 Mother-to-Child Transmission of HIV Viruses in South-west Burkina Faso: Intermediate Results VII International Conference on AIDS, Florence, Italy, 6/16-21, Abstract M.C.3089.

Prazuck, T., J. B. Guiard-Schmid, J. M. V. Yameogo, et al. 1991 Transmission Materno-Infantile de VIH-1, VIH-2 et Doubles Profils dans L'Ouest du Burkina Faso VI International Conference on AIDS in Africa, Dakar, Senegal 12/16-19, Poster M.A.269.

Rochereau, A., S. Lankoande, M. Yameogo, et al. 1991 Surveillance Serologique des Infections a VIH dans Trois Populations Sentinelles a Bobo-Dioulasso VI International Conference on AIDS in Africa, Dakar, Senegal, 12/16-19, Poster T.A.105.

Soudre, R. P. Ouedraogo, J. W. Krebs, et al. 1988 Seroprevalence of HIV-1 and HIV-2 in Burkino Faso IV International Conference on AIDS, Stockholm, 6/13-14, Abstract 5029.

Sangare, L., N. Meda, S. Lankoande, et al. 1997 HIV Infection among Pregnant Women in Burkina Faso: A Nationwide Serosurvey International Journal of STD and AIDS, vol. 8, no. 10, October, pp. 646-651.

Seye, A. 1999 Mobilisons - Nous Pour une Lutte Efficace Contre la Propagation du VIH/SIDA/IST Bulletin de Retro-Information sur le SIDA, Burkina Faso, no. 004.

Sombie, I., I. Compaore, P. Del Campon, et al. 2001 Spectre des Germes de MST et Sensibilite de Neissaria Gonorrhoea au Antibiotiques Chez des Patients Consultants Pour Signes ... XIIth International Conference on AIDS and STDs in Africa, Ouagadougou, Burkina Faso, 12/9-13, Abstract 10DT4-2.

Yameogo, M., S. Ledru, B. Cauchoix, et al. 1993 Mycobacteries et Infection a VIH chez des Tuberculeux Pulmonaires a Bobo Dioulasso, Burkina Faso VIII International Conference on AIDS in Africa, Marrakech, Morocco, 12/12-16, Abstract Th.P.B.067.

Websites: [www.aids.africa.com](http://www.aids.africa.com)



## Annex: HIV surveillance by site

Group	Area	1987	1988	1989	1990	1991	1992	1993	1994	1995	1996	1997	1998	1999	2000	2001	2002	2003		
Pregnant women	Major urban areas	Bobo-Dioulasso (1), Bobo-Dioulasso			4.90	7.80				7.50	9.60	9.70					5.68			
		Bobo-Dioulasso (2), Bobo-Dioulasso																6.00		
		Clinics, Bobo-Dioulasso												5.90						
		Hamdallaye, Bobo-Dioulasso												8.10	4.60	5.40				
		Koko & Hamdallaye, Bobo-Dioulasso										10.00								
		Kossodo, Ouagadougou												6.36	8.30	8.40	4.80			
		Ouagadougou (1), Ouagadougou	7.50								8.30								4.82	
		Ouagadougou (2), Ouagadougou																	4.40	
		Saint-Camille, Ouagadougou													6.95	7.50	7.20			
		Sarfalao, Bobo-Dioulasso													7.10	7.36	7.20	7.20		
	Social Security (CNSS) & Farakan, B											9.16								
	Outside major urban areas	Banfara	3.10				5.00													
		Dedougou								5.10										
		Dori								9.70										
		Fada N'Gourma									6.50									
		Gaoua	5.80			14.00	12.50	10.80	5.70					4.00	6.00			1.50	5.00	
		Hounde district																		
Ouahigouya						7.30				10.00		5.29	6.60	6.00				4.66		
SMI de CSPS Naba Tigre, Kappalin et																	13.41			
SMI des CSPS No. 1 & 2, Tenkodogo																	2.86			
SMI du Centre Medical & SMI du Bour																	5.45			
Sex workers	Major urban areas	Bobo-Dioulasso (1), Bobo-Dioulasso							57.20					30.75						
		Ouagadougou (1), Ouagadougou			64.00					59.20										
	Injecting drug users	Major urban areas	Bobo-Dioulasso (1), Bobo-Dioulasso			19.60	17.50								21.95					
			Centre Hospitalier National Souro S						41.82											
			Ouagadougou (1), Ouagadougou	59.00																
STI patients	Major urban areas	Ouagadougou (2), Ouagadougou	23.00																	
		Men having sex with men																		
Tuberculosis patients	Major urban areas	Bobo-Dioulasso (1), Bobo-Dioulasso			23.80	23.50	25.80		36.62											
		Ouagadougou (1), Ouagadougou	42.00		14.00															