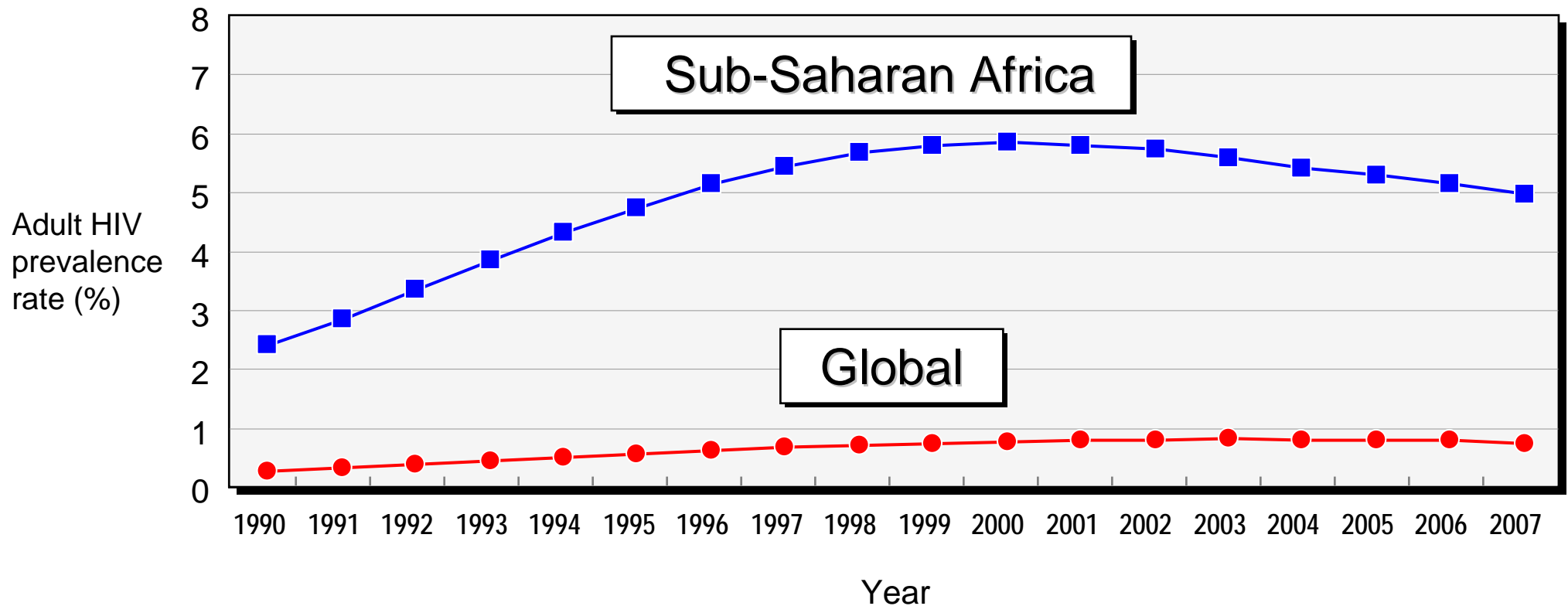
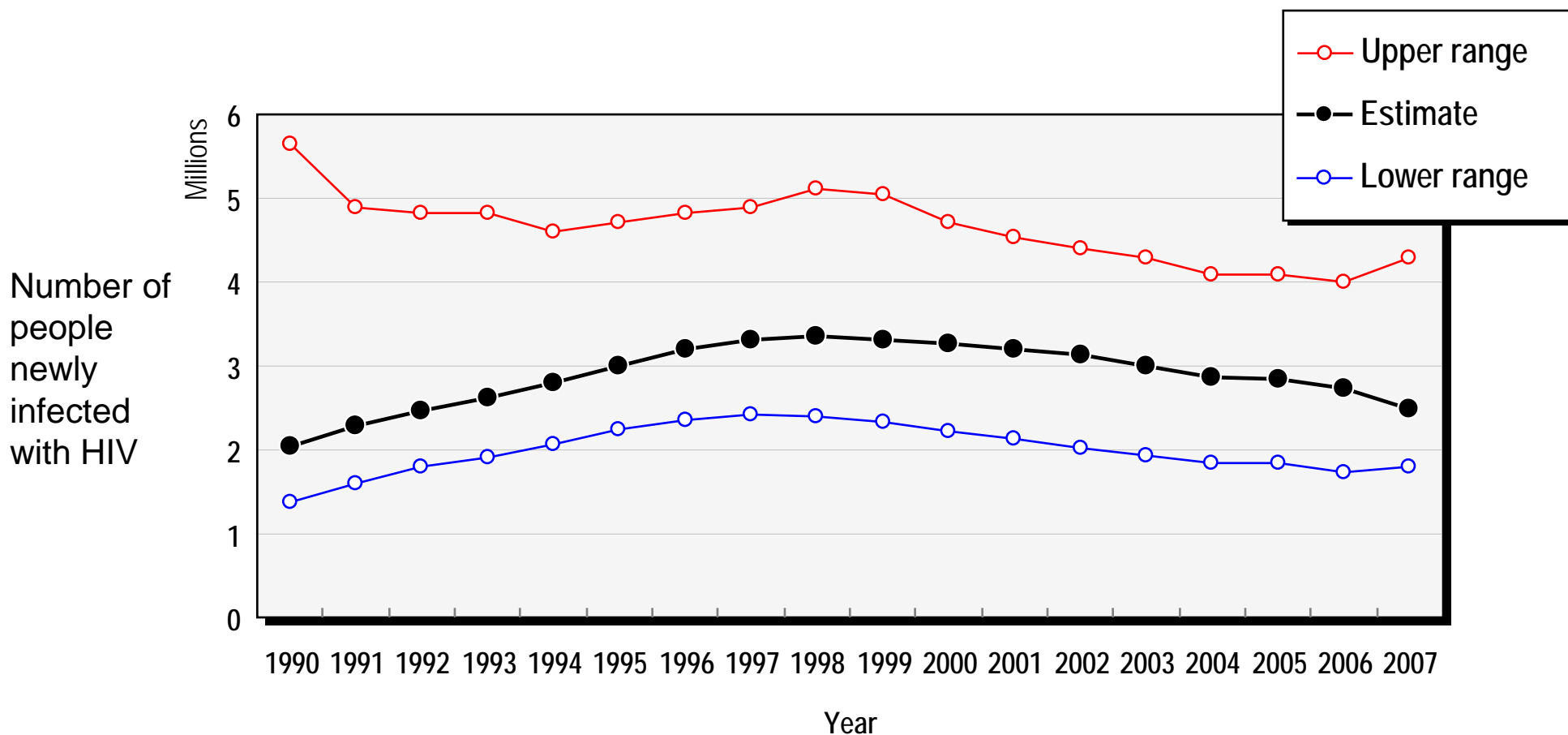


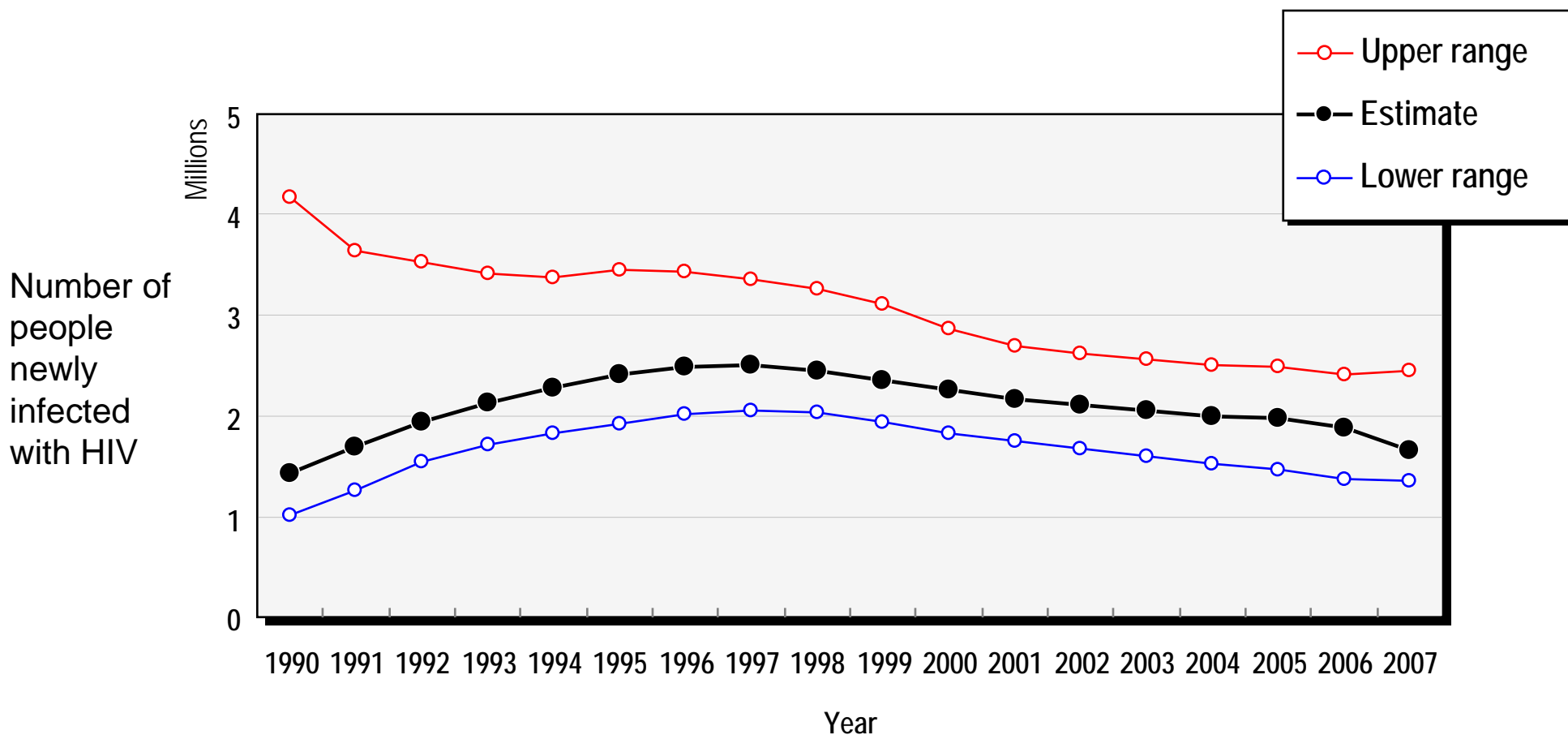
Estimated adult (15–49 years) HIV prevalence rate (%) globally and in Sub-Saharan Africa, 1990–2007



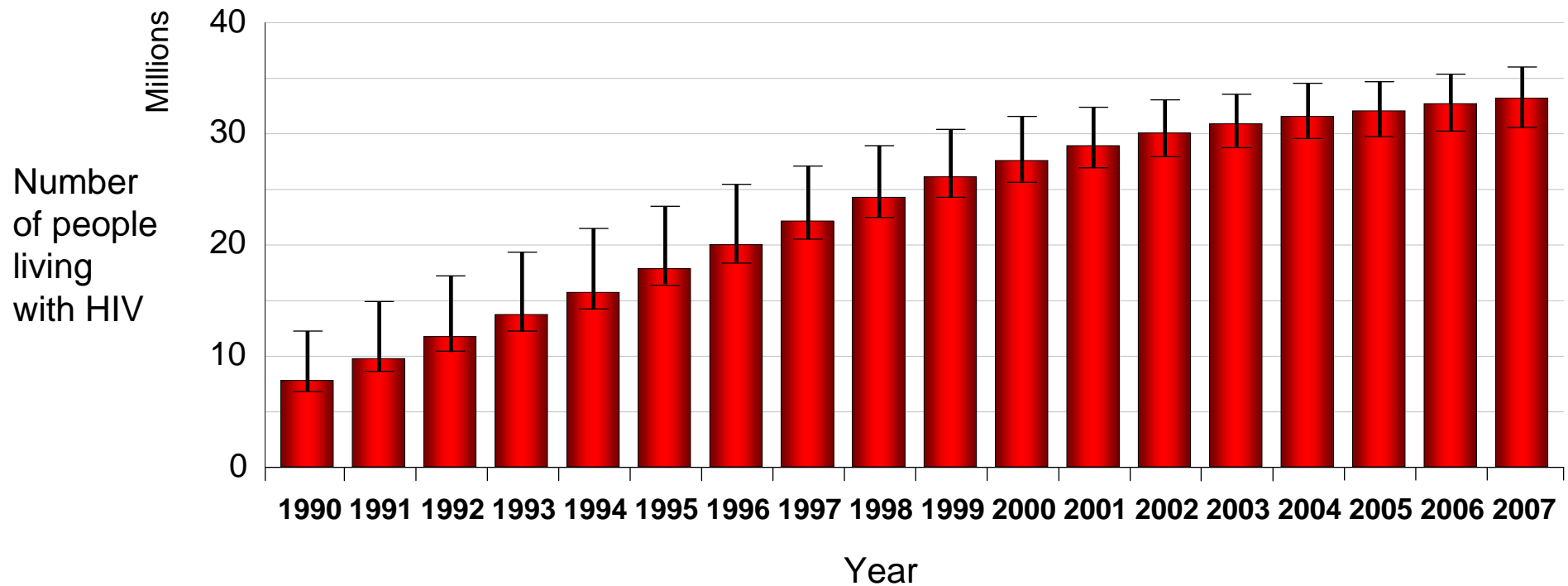
Estimated number of people newly infected with HIV globally, 1990–2007



Estimated number of people newly infected with HIV in Sub-Saharan Africa, 1990–2007

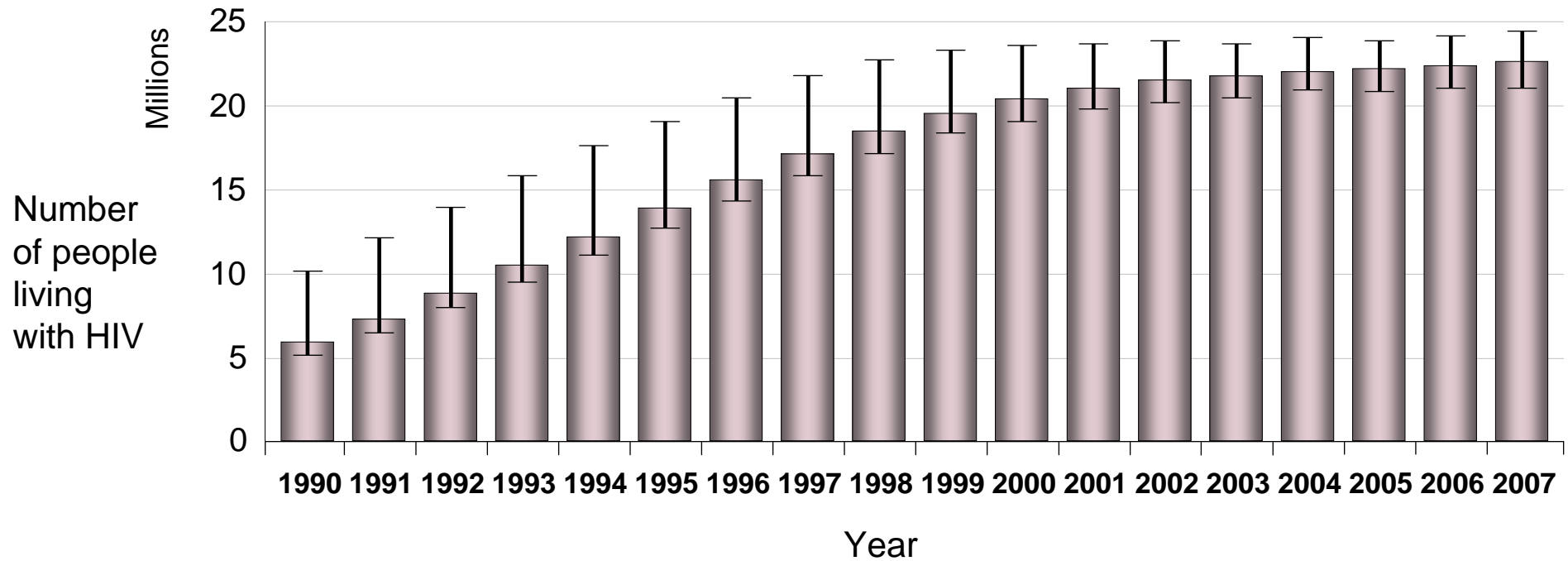


Estimated number of people living with HIV globally, 1990–2007



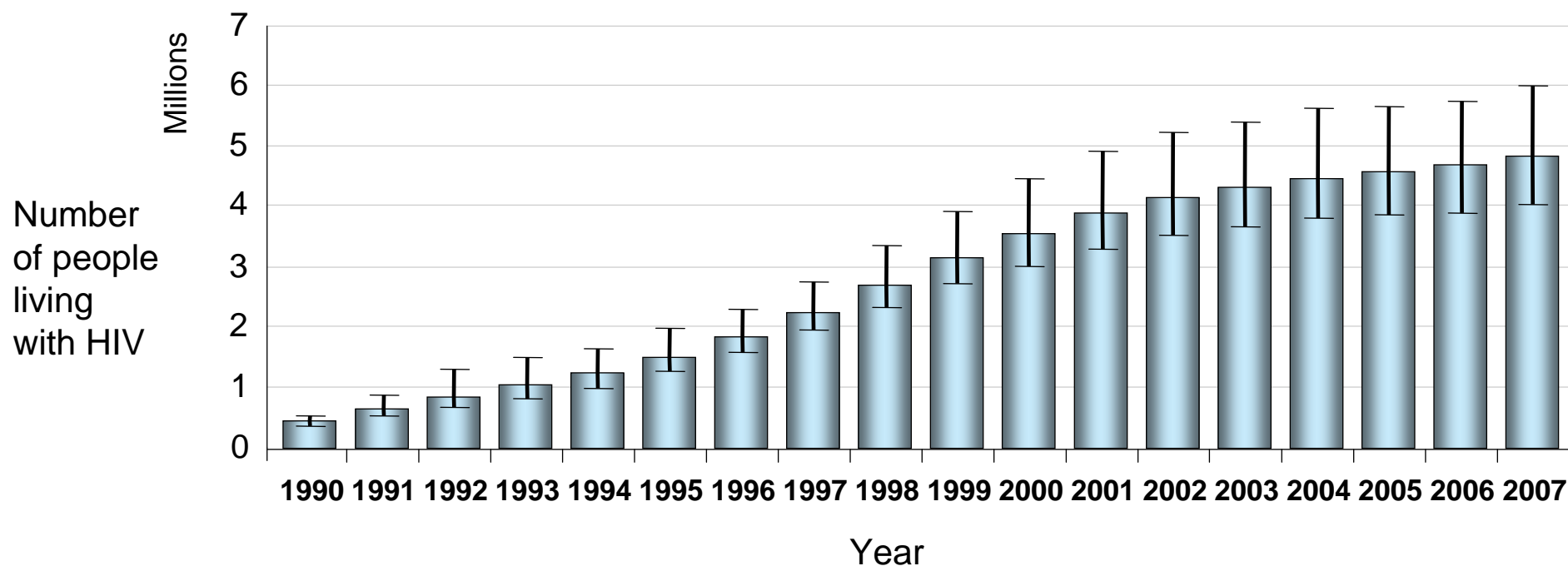
 *This bar indicates the range*

Estimated number of people living with HIV in Sub-Saharan Africa, 1990–2007



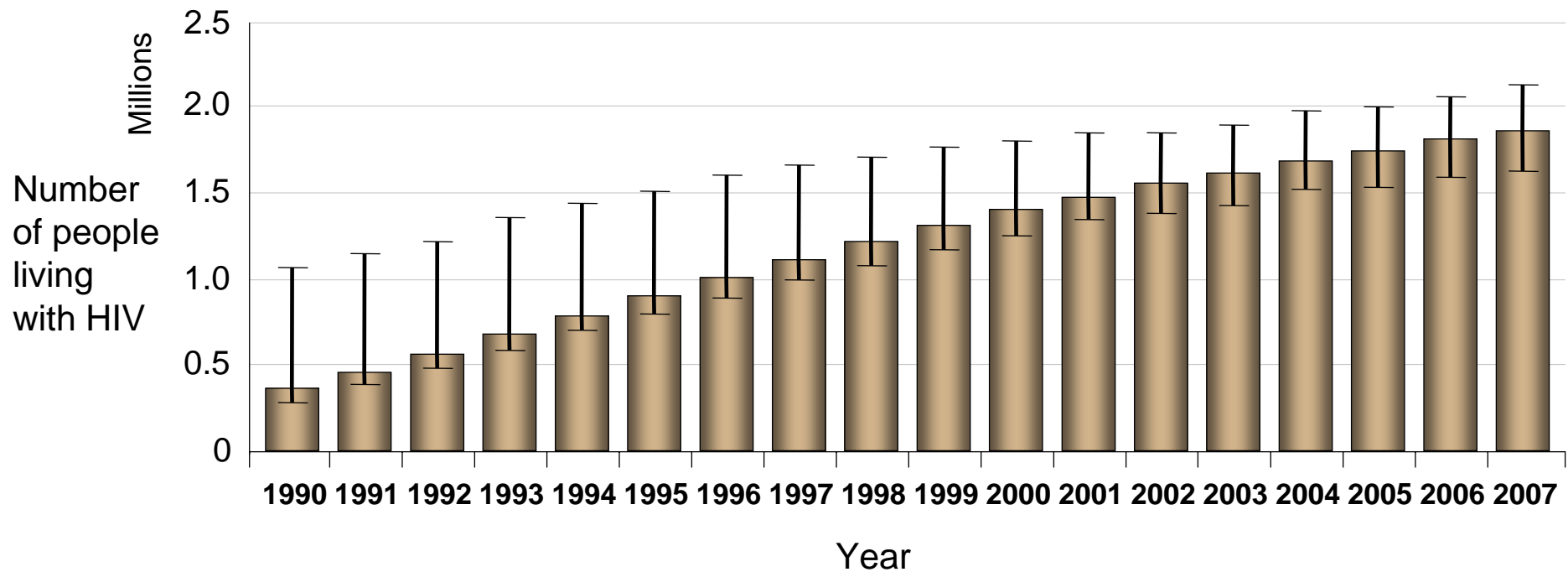
 *This bar indicates the range*

Estimated number of people living with HIV in Asia, 1990–2007



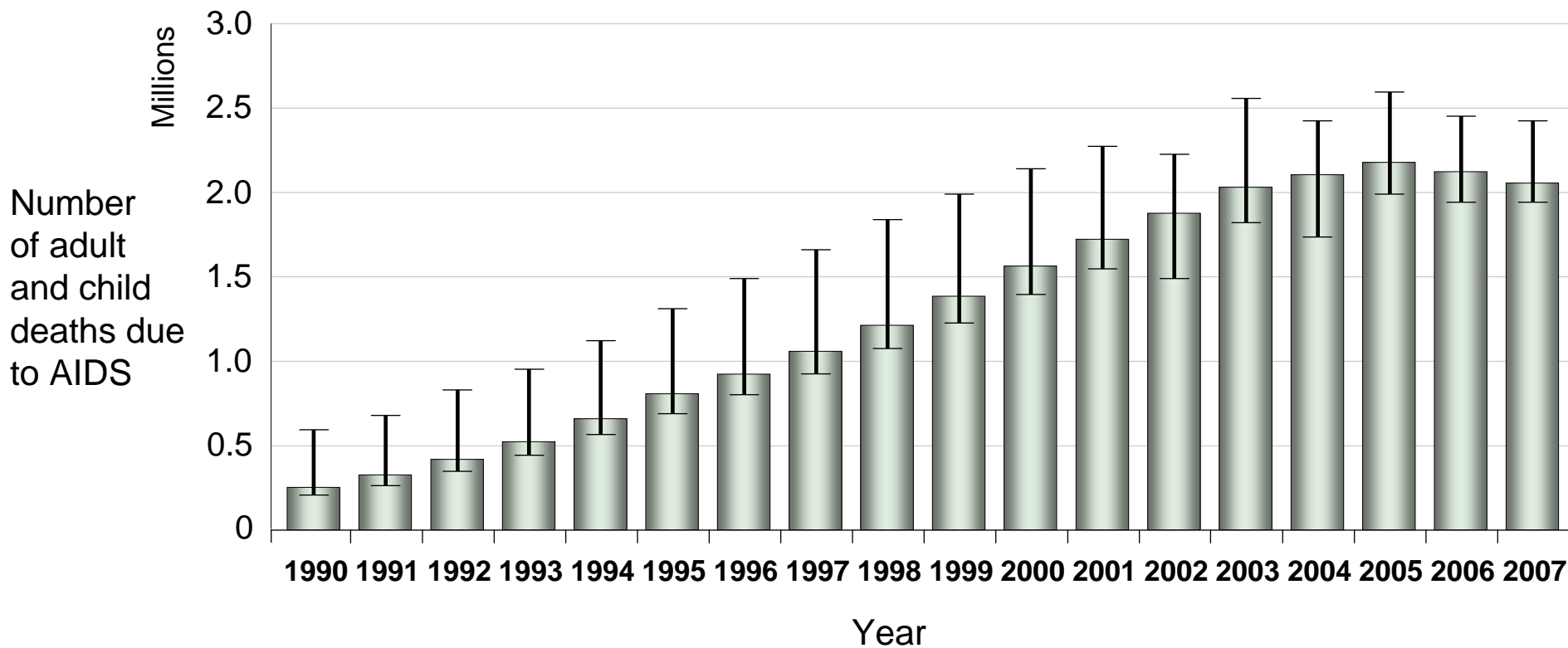
 This bar indicates the range

Estimated number of people living with HIV in Latin American and Caribbean, 1990–2007



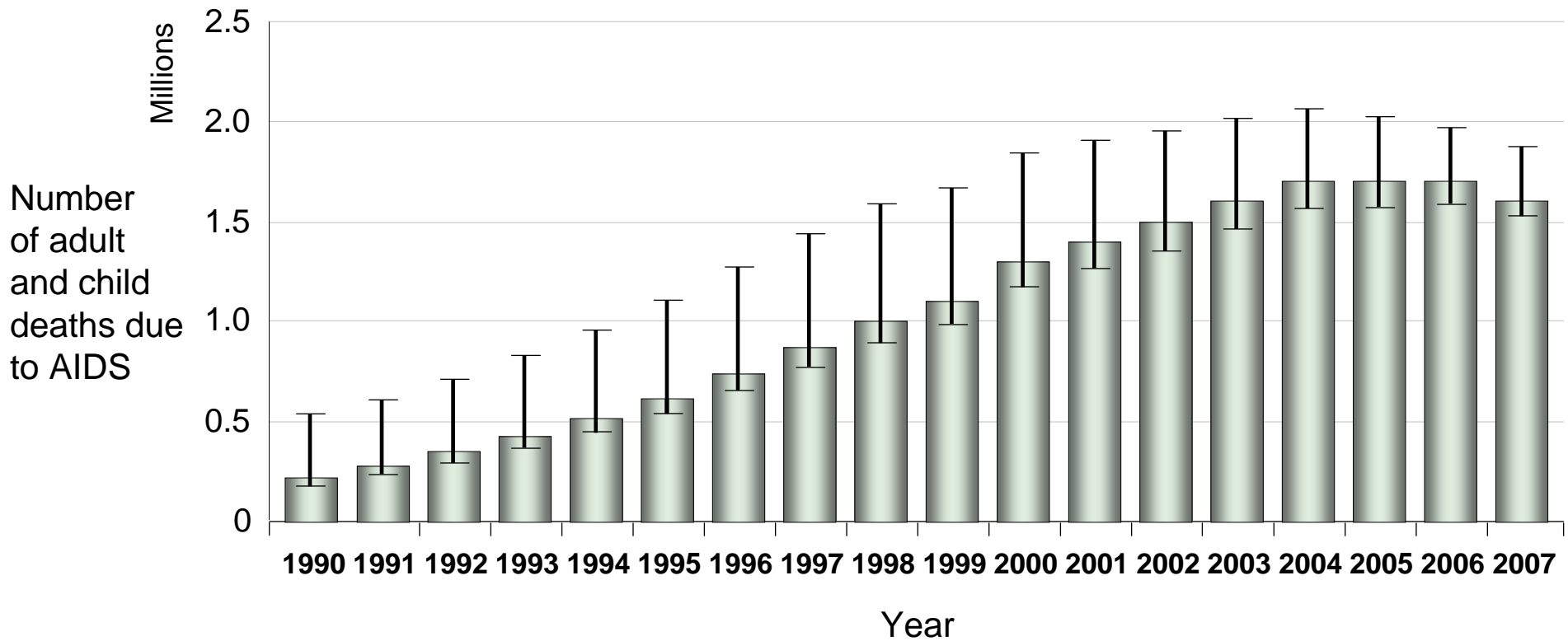
 *This bar indicates the range*

Estimated number of adult and child deaths due to AIDS globally, 1990–2007



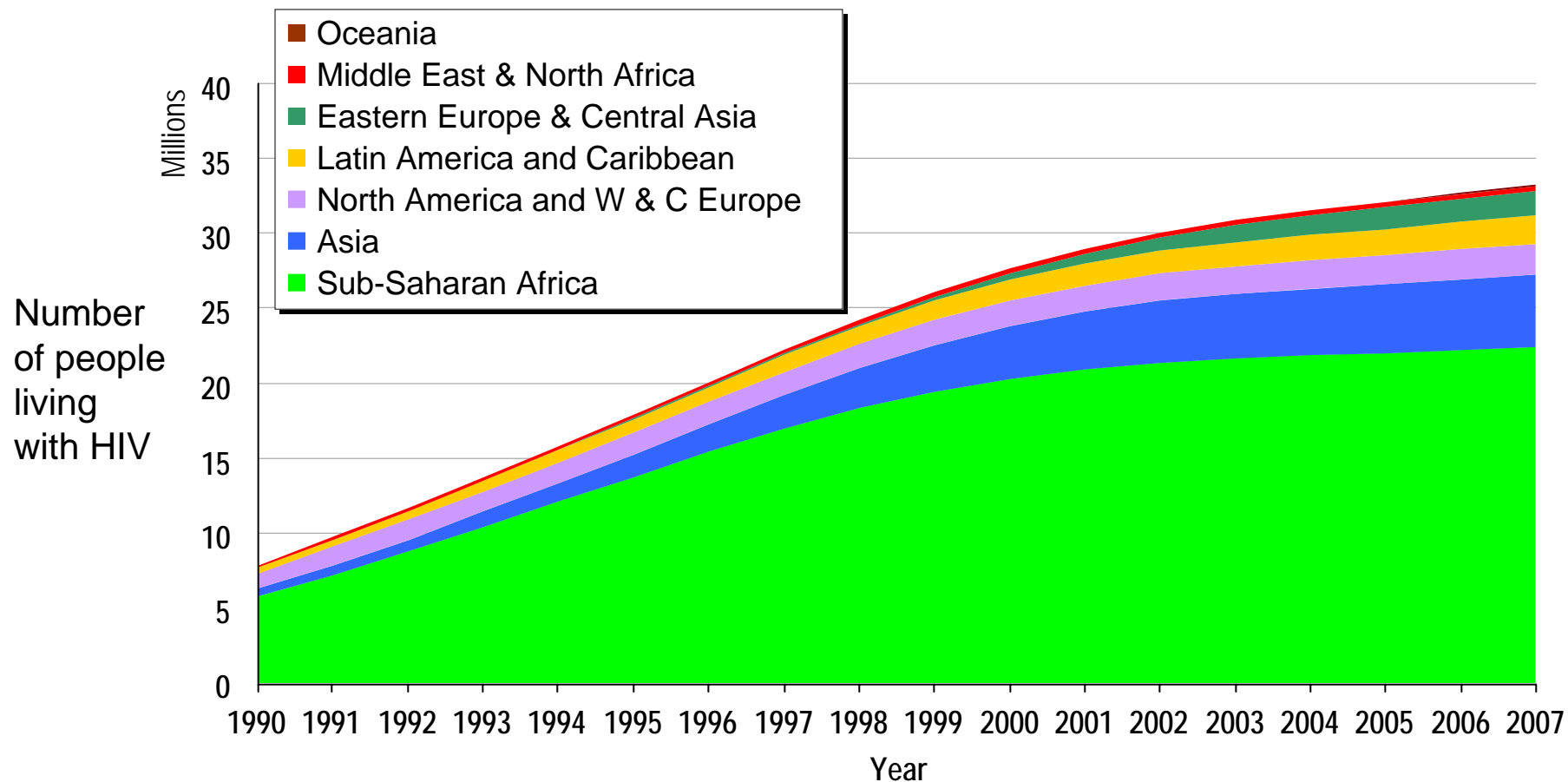
 *This bar indicates the range*

Estimated number of adult and child deaths due to AIDS in Sub-Saharan Africa, 1990–2007



 This bar indicates the range

Estimated number of adults and children living with HIV, by region, 1990–2007



Estimated number of adults and children living with HIV, by region (excluding Sub-Saharan Africa), 1990–2007

