



Country experience of HIV/TB Collaboration and scaling up towards Universal Access

**Dr. Sriprapa Nateniyom,
Department of Disease Control,
Ministry of Public Health, Thailand.**



Outline of the presentation

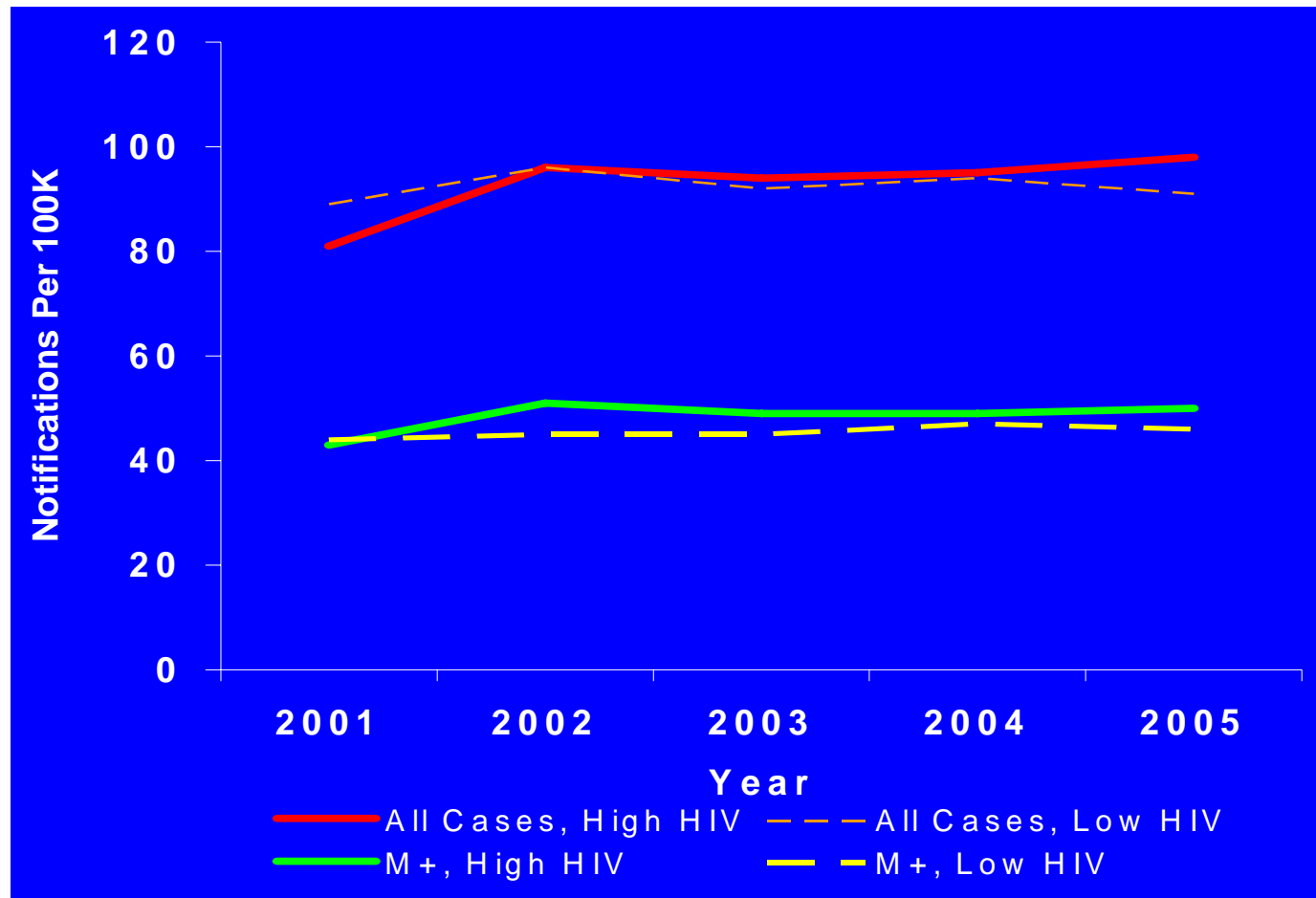
- HIV/TB situation in Thailand
- Country response to HIV/TB
- Lesson learnt & Barriers
- Challenges
- Conclusion



HIV/TB Situation in Thailand

- Rank 18th on the list of 22 “high-burden” TB countries
- Generalized HIV epidemic state (1.09% of pregnant women in 2006)
- High HIV prevalence among TB patients : estimated 11% (WHO report 2008)
- TB is the most common OI for HIV infected persons (29%)
- HIV is still driving the TB epidemic

Notification Rate Increased in High HIV Provinces, 2001-2005



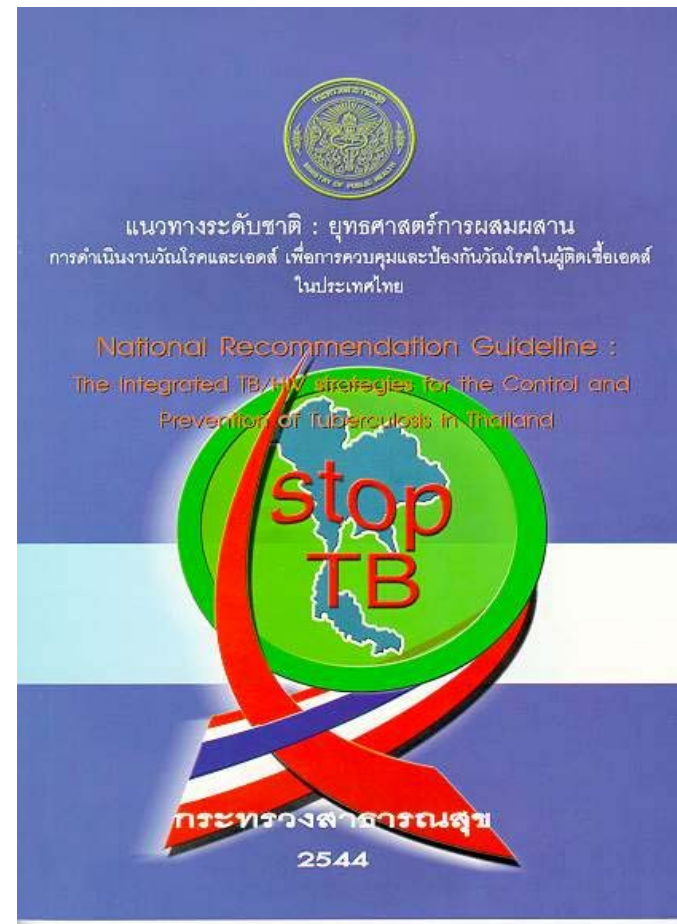
Country Response to HIV/TB

In 2001:

Develop the integrated TB/HIV strategies

In 2002-3:

Activities relevant to the recommendation introduced in pilot sites



In 2004 ;

- The TB/HIV coordinating board was set up to issue policies and over see collaboration between TB and HIV programmes.



- National operational guideline was developed
- National targets for TB/HIV collaborative activities were set up
- Joint planning ; training



- ❖ Integrated TB/HIV implementation in 2004-5
 - ❖ Surveillance of HIV amongst TB patients
 - ❖ Establish joint TB/HIV activities in TB and HIV clinics of public health facilities : case finding, case management and effective referral system between two clinics
 - ❖ Supervision monitoring and evaluation (new recording/reporting system)
- ❖ In 2006, expansion and cover all provinces in 2007

Report of TB/HIV collaborative activities, 2006-2007.

	2006		2007	
	target	result	target	result
Newly detected HIV	-	44,517	-	26,645
Newly detected HIV received TB screening	80%	36,138 (81%)	85%	23,593 (89%)
TB registered patents	-	51,412	-	55,226
HIV testing in TB patients	75%	26,552 (52%)	80%	37,764 (68%)
HIV infected TB patients	-	7,141	-	7,615
HIV/TB patients received ART during TB treatment	50%	2,260 (31.7%)	55%	2,456 (32.2%)
HIV/TB patients received CPT	80%	4,551 (64%)	>80%	5,074 (67%)



Treatment outcomes of new smear positive TB patients in 2006.

	Success	Fail	Died	Default	TO
TB (HIV- , unknown)	81%	1.7%	7%	5.8%	2.6%
TB (HIV+)	61%	2.1%	23%	5.5%	4.8%
Total	78.4%	1.8%	8%	5.7%	2.9%



Lesson learnt & Barriers

- TB/HIV are hindering and posing more challenges towards the TB control targets
- Coordinating mechanisms for TB/HIV at all levels are essential for the success in implementing integrated activities
- Consistently intensified supervision from all levels resulted in a high performance.
- Stigma and discrimination for dual diseases hamper the access to prevention, treatment, care and support services.
- The late diagnosis and treatment of AIDS patients has resulted in high TB death and low success.



challenges

- The effectiveness of the coordinating mechanism
- Inadequate intervention to reduce high death rate of HIV infected TB patients, for example the VCT for early diagnosis and treatment of AIDS
- Inadequate capacity among TB and HIV staff to provide HIV counseling, treatment and care
- The need for more intensive community involvement to accelerate access
- The need to engage all care providers for TB/HIV



Conclusion

- Thailand has high burden of TB especially among HIV positive patient with low treatment success
- There is an urgent need to scale up the VCT program for early diagnosis and treatment of HIV infected patients to reduce the TB incidence and also the death rate.
- Although Integrated TB/HIV mechanism and guideline do exist, and activities are in place to scale up prevention, treatment and care, the effective implementation at all levels are still a big challenges



Thank you for attention