

2004
Update



Democratic Republic of the Congo

EPIDEMIOLOGICAL FACT SHEETS
ON HIV/AIDS AND SEXUALLY TRANSMITTED INFECTIONS



Joint United Nations Programme on HIV/AIDS

UNAIDS

UNHCR • UNICEF • WFP • UNDP • UNFPA
UNODC • ILO • UNESCO • WHO • WORLD BANK



World Health
Organization

HIV/AIDS estimates

In 2003 and during the first quarter of 2004, UNAIDS and WHO worked closely with national governments and research institutions to recalculate current estimates on people living with HIV/AIDS. These calculations are based on the previously published estimates for 1999 and 2001 and recent trends in HIV/AIDS surveillance in various populations. A methodology developed in collaboration with an international group of experts was used to calculate the new estimates on prevalence and incidence of HIV and AIDS deaths, as well as the number of children infected through mother-to-child transmission of HIV. Different approaches were used to estimate HIV prevalence in countries with low-level, concentrated or generalised epidemics. The current estimates do not claim to be an exact count of infections. Rather, they use a methodology that has thus far proved accurate in producing estimates that give a good indication of the magnitude of the epidemic in individual countries. However, these estimates are constantly being revised as countries improve their surveillance systems and collect more information.

Adults in this report are defined as women and men aged 15 to 49. This age range covers people in their most sexually active years. While the risk of HIV infection obviously continues beyond the age of 50, the vast majority of those who engage in substantial risk behaviours are likely to be infected by this age. The 15 to 49 range was used as the denominator in calculating adult HIV prevalence.

Estimated number of adults and children living with HIV/AIDS, end of 2003

These estimates include all people with HIV infection, whether or not they have developed symptoms of AIDS, alive at the end of 2003:

Adults and children	1,100,000		
Low estimate	450,000		
High estimate	2,600,000		
Adults (15-49)	1,000,000	Adult rate (%)	4.2
Low estimate	410,000	Low estimate	1.7
High estimate	2,400,000	High estimate	9.9
Children (0-15)	110,000		
Low estimate	42,000		
High estimate	280,000		
Women (15-49)	570,000		
Low estimate	230,000		
High estimate	1,300,000		

Estimated number of deaths due to AIDS

Estimated number of adults and children who died of AIDS during 2003:

Deaths in 2003	100,000
Low estimate	50,000
High estimate	220,000

Estimated number of orphans

Estimated number of children who have lost their mother or father or both parents to AIDS and who were alive and under age 17 at the end of 2003:

Current living orphans	770,000
Low estimate	520,000
High estimate	1,100,000

Assessment of the epidemiological situation 2004

Although a system of HIV sentinel surveillance among women attending antenatal care clinics was established in 1985, sentinel surveys have not been conducted regularly and sites have not been used consistently. Efforts are ongoing to strengthen surveillance.

In women attending ANC in 2002, HIV prevalence ranged from 3.0% in Kinshasa to 4.4% in Mbuji-Mayi. In the 1999 sentinel surveillance, HIV prevalence among women attending antenatal care clinics ranged from 0.6% in Mikalayi to 8.6% in Sendwe. HIV prevalence rates among women attending antenatal care clinics in Kinshasa were 6.9% in 1985, 5.7% in 1987, 10.8% in 1992 and 5.4% in 1999. From 1992 to 1999, HIV prevalence rates in Kisangani remained between 3.0% and 5.6%. In Mbuji-Mayi, HIV prevalence among women attending antenatal care clinics was 6.3% in 1997 and 4.8% in 2002. However, prevalence rates seem to be increasing in Lubumbashi, from 2.7% in 1989 to 4.7% in 1997, and to 8.5% in 1999.

HIV prevalence rates among sex workers in Kinshasa have fluctuated between 26.8% in 1985, 38.0% in 1989, 29.0% in 1997 and 22.2% in 2002.

UNAIDS/WHO Working Group on Global HIV/AIDS and STI Surveillance

Global Surveillance of HIV/AIDS and sexually transmitted infections (STIs) is a joint effort of WHO and UNAIDS. The UNAIDS/WHO Working Group on Global HIV/AIDS and STI Surveillance, initiated in November 1996, guides respective activities. The primary objective of the Working Group is to strengthen national, regional and global structures and networks for improved monitoring and surveillance of HIV/AIDS and STIs. For this purpose, the Working Group collaborates closely with national AIDS programmes and a number of national and international experts and institutions. The goal of this collaboration is to compile the best information available and to improve the quality of data needed for informed decision-making and planning at national, regional, and global levels. The Epidemiological Fact Sheets are one of the products of this close and fruitful collaboration across the globe.

Within this framework, the Fact Sheets collate the most recent country-specific data on HIV/AIDS prevalence and incidence, together with information on behaviours (e.g. casual sex and condom use) which can spur or stem the transmission of HIV.

Not unexpectedly, information on all of the agreed upon indicators was not available for many countries in 2003. However, these updated Fact Sheets do contain a wealth of information which allows identification of strengths in currently existing programmes and comparisons between countries and regions. The Fact Sheets may also be instrumental in identifying potential partners when planning and implementing improved surveillance systems.

The fact sheets can be only as good as information made available to the UNAIDS/WHO Working Group on Global HIV/AIDS and STI Surveillance. Therefore, the Working Group would like to encourage all programme managers as well as national and international experts to communicate additional information to them whenever such information becomes available. The Working Group also welcomes any suggestions for additional indicators or information proven to be useful in national or international decision-making and planning.

Basic indicators

For consistency reasons the data used in the table below are taken from official UN publications.

DEMOGRAPHIC DATA	YEAR	ESTIMATE	SOURCE
Total population (thousands)	2004	54,417	UN population division database
Female population aged 15-24 (thousands)	2004	5,500	UN population division database
Population aged 15-49 (thousands)	2004	24,222	UN population division database
Annual population growth rate (%)	1992-2002	2.4	UN population division database
% of population in urban areas	2003	31.5	UN population division database
Average annual growth rate of urban population	2000-2005	4.4	UN population division database
Crude birth rate (births per 1,000 pop.)	2004	50	UN population division database
Crude death rate (deaths per 1,000 pop.)	2004	20.6	UN population division database
Maternal mortality rate (per 100,000 live births)	2000	990	WHO (WHR2004)/UNICEF
Life expectancy at birth (years)	2002	43.5	World Health Report 2004, WHO
Total fertility rate	2002	6.7	World Health Report 2004, WHO
Infant mortality rate (per 1,000 live births)	2000	127	World Health Report 2004, WHO
Under 5 mortality rate (per 1,000 live births)	2000	212	World Health Report 2004, WHO

SOCIO-ECONOMIC DATA	YEAR	ESTIMATE	SOURCE
Gross national income, ppp, per capita (Int.\$)	2002	580	World Bank
Gross domestic product, per capita % growth	2001-2002	0.2	World Bank
Per capita total expenditure on health (Int.\$)	2001	12	World Health Report 2004, WHO
General government expenditure on health as % of total expenditure on health	2001	44.4	World Health Report 2004, WHO
Total adult illiteracy rate	2000	38.6	
Adult male illiteracy rate		26.9	UNESCO
Adult female illiteracy rate	2000	49.8	UNESCO
Gross primary school enrolment ratio, male	2000/2001	not available	UNESCO
Gross primary school enrolment ratio, female	2000/2001	not available	UNESCO
Gross secondary school enrolment ratio, male	2000/2001	not available	UNESCO
Gross secondary school enrolment ratio, female	2000/2001	not available	UNESCO

Contact address

UNAIDS/WHO Working Group on Global
HIV/AIDS and STI Surveillance
20, Avenue Appia
CH - 1211 Geneva 27
Switzerland
Fax: +41-22-791-4834

email: hivstrategicinfo@who.int or
estimates@unaids.org

website: <http://www.who.int/hiv>
<http://www.unaids.org>

Extracts of the information contained in these fact sheets may be reviewed, reproduced or translated for research or private study but not for sale or for use in conjunction with commercial purposes. Any use of information in these fact sheets should be accompanied by the following acknowledgment "UNAIDS/WHO epidemiological fact sheets on HIV/AIDS and Sexually Transmitted Infections, 2004 Update".

HIV prevalence in different populations

This section contains information about HIV prevalence in different populations. The data reported in the tables below are mainly based on the HIV database maintained by the United States Bureau of the Census where data from different sources, including national reports, scientific publications and international conferences are compiled. To provide a simple overview of the current situation and trends over time, summary data are given by population group, geographical area (Major Urban Areas versus Outside Major Urban Areas), and year of survey. Studies conducted in the same year are aggregated and the median prevalence rates (in percentages) are given for each of the categories. The maximum and minimum prevalence rates observed, as well as the total number of surveys/sentinel sites, are provided with the median, to give an overview of the diversity of HIV-prevalence results in a given population within the country. Data by sentinel site or specific study from which the medians were calculated are printed at the end of this fact sheet.

The differentiation between the two geographical areas Major Urban Areas and Outside Major Urban Areas is not based on strict criteria, such as the number of inhabitants. For most countries, Major Urban Areas were considered to be the capital city and - where applicable - other metropolitan areas with similar socio-economic patterns. The term Outside Major Urban Areas considers that most sentinel sites are not located in strictly rural areas, even if they are located in somewhat rural districts.

HIV sentinel surveillance*

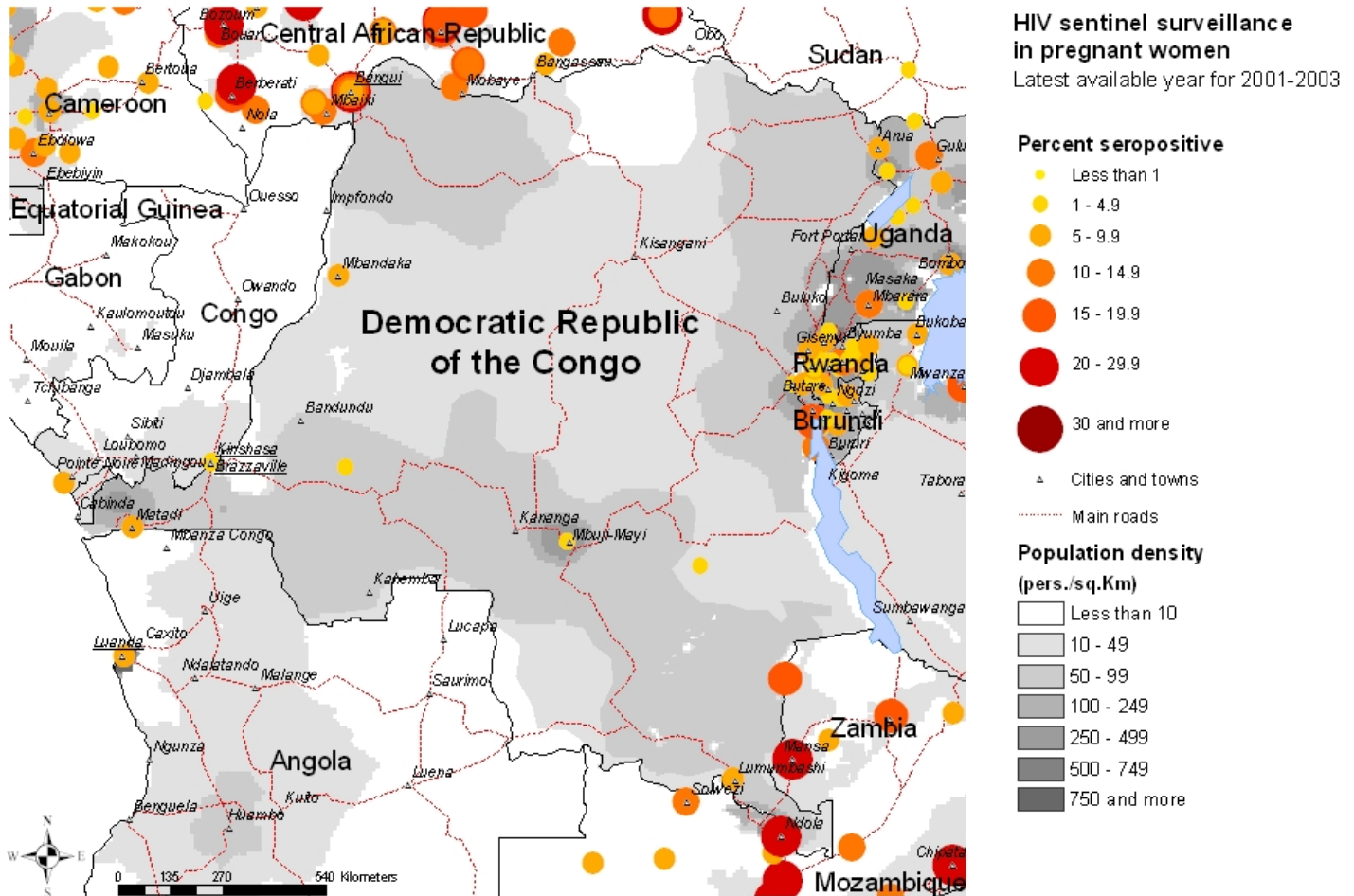
Group	Area		1987	1988	1989	1990	1991	1992	1993	1994	1995	1996	1997	1998	1999	2000	2001	2002	2003		
Pregnant women	Major urban areas	N-Sites	3.00	3.00	3.00	4.00	6.00	5.00	2.00	2.00	2.00	3.00	3.00		3.00	1.00			3.00		
		Minimum	5.70	3.60	4.36	3.60	3.50	3.08	4.60	5.23	3.93	2.90	2.70		2.70	4.10			3.18		
		Median	5.98	7.12	6.51	4.62	5.85	4.62	5.78	5.40	4.30	3.20	3.00		4.10	4.10			3.92		
		Maximum	7.36	7.74	15.38	5.49	11.07	10.80	6.95	5.57	4.68	5.10	6.20		5.40	4.10			4.31		
	Outside major urban areas	N-Sites		2.00	5.00	7.00	8.00	1.00	1.00					15.00	3.00	1.00	1.00			6.00	
		Minimum		3.10	2.34	2.88	0.33	3.50	4.01					0.40	1.00	8.50	5.95			1.80	
		Median		3.75	2.72	3.73	2.94	3.50	4.01					3.90	4.80	8.50	5.95			4.16	
		Maximum		4.40	7.90	5.64	5.50	3.50	4.01					6.30	5.30	8.50	5.95			7.02	
	Sex workers	Major urban areas	N-Sites		1.00	2.00	1.00	1.00			1.00	1.00		1.00							
			Minimum		35.20	35.12	30.00	30.20			34.81	30.30		29.00							
			Median		35.20	36.56	30.00	30.20			34.81	30.30		29.00							
			Maximum		35.20	38.00	30.00	30.20			34.81	30.30		29.00							
Outside major urban areas		N-Sites			1.00		1.00							1.00							
		Minimum			17.74		25.40							29.17							
		Median			17.74		25.40							29.17							
		Maximum			17.74		25.40							29.17							
Injecting drug users		Major urban areas	N-Sites										1.00	1.00							
			Minimum											5.35	12.15						
			Median											5.35	12.15						
			Maximum											5.35	12.15						
	Outside major urban areas	N-Sites											4.00	5.00	4.00						
		Minimum											43.40	8.33	73.90						
		Median											76.65	76.60	99.99						
		Maximum											99.50	97.60	99.99						
	Men having sex with men	Major urban areas	N-Sites	2.00	1.00	1.00								1.00							
			Minimum	17.40	22.64	20.32									26.00						
			Median	26.86	22.64	20.32									26.00						
			Maximum	36.32	22.64	20.32									26.00						
Outside major urban areas		N-Sites	1.00		2.00	2.00								2.00							
		Minimum	12.00		14.00	2.82								28.30							
		Median	12.00		23.18	7.66								31.85							
		Maximum	12.00		32.35	12.50								35.40							

*Detailed data by site can be found in the Annex.

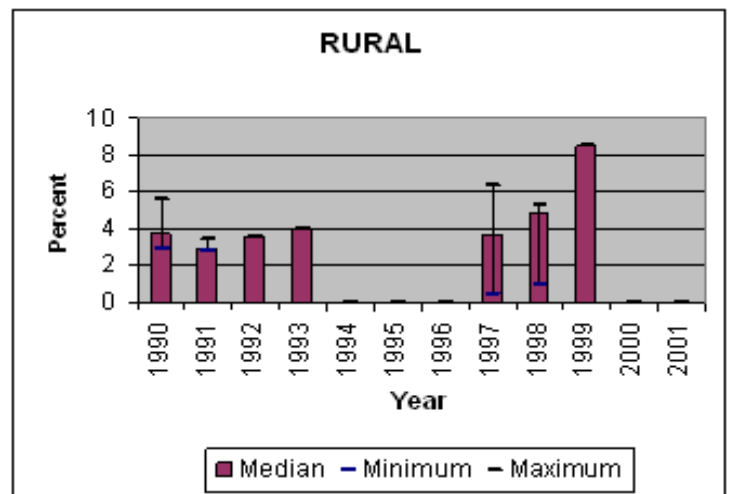
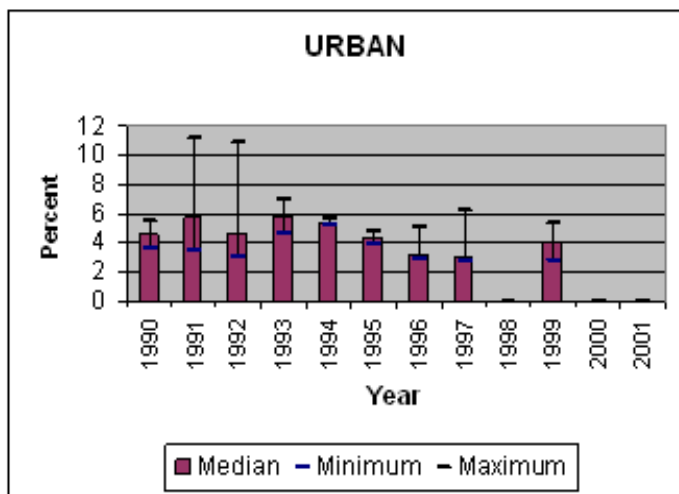
Maps & charts

Mapping the geographical distribution of HIV prevalence among different population groups may assist in interpreting both the national coverage of the HIV surveillance system as well in explaining differences in levels of prevalence. The UNAIDS/WHO Working Group on Global HIV/AIDS and STI Surveillance, in collaboration with the WHO Public Health Mapping Team, Communicable Diseases, is producing maps showing the location and HIV prevalence in relation to population density, major urban areas and communication routes. For generalized epidemics, these maps show the location of prevalence of antenatal surveillance sites.

Trends in antenatal sentinel surveillance for higher prevalence countries, or in prevalence among selected populations for countries with concentrated epidemics, are a new addition. These are presented for those countries where sufficient data exist.



Trends in HIV prevalence among antenatal clinic attendees



Median prevalence and ranges are shown in areas with more than one sentinel site.

The boundaries and names shown and the designations used on the map do not imply the expression of any opinion whatsoever on the part of the World Health Organization concerning the legal status of any country, territory, city or area or of its authorities, or concerning the delimitation of its frontiers or boundaries. Dotted lines on maps represent approximate border lines for which there may not yet be full agreement. WHO 2004, all rights reserved.

Reported AIDS cases

Following WHO and UNAIDS recommendations, AIDS case reporting is carried out in most countries. Data from individual AIDS cases are aggregated at the national level and sent to WHO. However, case reports come from surveillance systems of varying quality. Reporting rates vary substantially from country to country and low reporting rates are common in developing countries due to weaknesses in the health care and epidemiological systems. In addition, countries use different AIDS case definitions. A main disadvantage of AIDS case reporting is that it only provides information on transmission patterns and levels of infection approximately 5-10 years in the past, limiting its usefulness for monitoring recent HIV infections.

Despite these caveats, AIDS case reporting remains an important advocacy tool and is useful in estimating the burden of HIV-related morbidity as well as for short-term planning of health care services. AIDS case reports also provide information on the demographic and geographic characteristics of the affected population and on the relative importance of the various exposure risks. In some situations, AIDS reports can be used to estimate earlier HIV infection patterns using back-calculation. AIDS case reports and AIDS deaths have been dramatically reduced in industrialized countries with the introduction of Anti-Retroviral Therapy (ART).

1979	1980	1981	1982	1983	1984	1985	1986	1987	1988	1989	1990	1991	1992	1993	1994	1995	1996	1997	1998
0	0	0	0	0	0	0	440	1988	4566	5609	3916	4482	2070	4215	2637	8329	11572	9642	5809
1999	2000	2001	2002	2003	Total	UNK	Date of last report												
9953	9848				85058		11/22/2001												

Curable sexually transmitted infections (STIs)

The predominant mode of transmission of both HIV and other STIs is sexual intercourse. Measures for preventing sexual transmission of HIV and STIs are the same, as are the target audiences for interventions. In addition, strong evidence supports several biological mechanisms through which STIs facilitate HIV transmission by increasing both HIV infectiousness and HIV susceptibility. Thus, detection and treatment of individuals with STIs is an important part of an HIV control strategy. In summary, if the incidence/prevalence of STIs is high in a country, then there is the possibility of high rates of sexual transmission of HIV. Monitoring trends in STIs provides valuable insight into the likelihood of the importance of sexual transmission of HIV within a country, and is part of second generation surveillance. These trends also assist in assessing the impact of behavioural interventions, such as delaying sexual debut, reducing the number of sex partners and promoting condom use.

Clinical services offering STI care are an important access point for people at high risk for both STIs and HIV. Identifying people with STIs allows for not only the benefit of treating the STI, but for prevention education, HIV testing, identifying HIV-infected persons in need of care, and partner notification for STIs or HIV infection. Consequently, monitoring different components of STI prevention and control can also provide information on HIV prevention and control activities within a country.

STI syndromes

Reported cases	1996	1997	1998	1999	2000	2001	2002	2003	Incidence 2003
Genital Ulcer			2060						
Urethral discharge			3040						

Comments:

Source: Ministère de la santé Publique. Compilation des notifications des cas de MST en R.D. Congo 1999.

Syphilis prevalence, women

Percent of blood samples taken from pregnant women aged 15-49 that test positive for syphilis - positive reaginic and treponemal test - during routine screening at selected antenatal clinics.

Year	Area	Rate	Range

Comments:

Source:

Estimated prevalence of curable STIs among female sex workers

- Chlamydia

Year	Area	Rate	Range

Comments:

Source:

- Gonorrhoea

Year	Area	Rate	Range

Comments:

Source:

Estimated prevalence of curable STIs among female sex workers (continued)**- Syphilis**

Year	Area	Rate	Range
------	------	------	-------

Comments:

Source:

- Trichomoniasis

Year	Area	Rate	Range
------	------	------	-------

Comments:

Source:

Health service and care indicators

HIV prevention strategies depend on the twin efforts of care and support for those living with HIV or AIDS, and targeted prevention for all people at risk or vulnerable to the infection. It is difficult to capture such a large range of activities with one or just a few indicators. However, a set of well-established health care indicators may help to identify general strengths and weaknesses of health systems. Specific indicators, such as access to testing and blood screening for HIV, help to measure the capacity of health services to respond to HIV/AIDS - related issues.

Access to health care

Indicators	Year	Estimate	Source
% of population with access to health services - total			
% of population with access to health services - urban			
% of population with access to health services - rural			
Contraceptive prevalence rate (%)	1990-1999	8	UNICEF/UNPOP
Percentage of contraceptive users using condoms			
% of births attended by skilled health personnel	2000	69.7	WHO
% of 1-yr-old children fully immunized - DPT	2002	43	WHO/UNICEF
% of 1-yr-old children fully immunized - Measles	2001	37	WHO/UNICEF
% of ANC clinics where HIV testing is available			

Number of adults (15-49) with advanced HIV infection receiving ARV therapy as of June 2004

Adults on treatment

Number: 2,500

Source: WHO

Estimated number of adults (15-49) in need of treatment in 2003

Adults needing treatment

Number: 160,000

Source: WHO/UNAIDS

Coverage of HIV testing and counselling

Number of public and NGO services providing testing and counselling services.

Year	Area	N=
2004	All	201

Comments:

Source: Banque de données du PNLS sur PTME et CVD. 2/3 des sites se trouvent à Kinshasa la capitale et au Sud-Kivu

Knowledge and behaviour

In most countries the HIV epidemic is driven by behaviours (e.g.: multiple sexual partners, injecting drug use) that expose individuals to the risk of infection. Information on knowledge and on the level and intensity of risk behaviour related to HIV/AIDS is essential in identifying populations most at risk for HIV infection and in better understanding the dynamics of the epidemic. It is also critical information in assessing changes over time as a result of prevention efforts. One of the main goals of the 2nd generation HIV surveillance systems is the promotion of a standard set of indicators defined in the National Guide (Source: National AIDS Programmes, A Guide to Monitoring and Evaluation, UNAIDS/00.17) and regular behavioural surveys in order to monitor trends in behaviours and to target interventions.

The indicators on knowledge and misconceptions are an important prerequisite for prevention programmes to focus on increasing people's knowledge about sexual transmission, and, to overcome the misconceptions that act as a disincentive to behaviour change. Indicators on sexual behaviour and the promotion of safer sexual behaviour are at the core of AIDS programmes, particularly with young people who are not yet sexually active or are embarking on their sexual lives, and who are more amenable to behavioural change than adults. Finally, higher risk male-male sex reports on unprotected anal intercourse, the highest risk behaviour for HIV among men who have sex with men.

Knowledge of HIV prevention methods

Prevention indicator: Percentage of young people 15-24 who both correctly identify two ways of preventing the sexual transmission of HIV and who reject three misconceptions about HIV transmission.

Year	Male	Female

Comments:

Source:

Reported condom use at last higher risk sex (young people 15-24)

Prevention indicator: Proportion of young people reporting the use of a condom during sex with a non-regular partner.

Year	Male	Female
2000		13

Comments: Based on last sex of never married women; Based on age group different than 15-24.

Source: MICS

Age-mixing in sexual partnerships among young women

The proportion of young women who have had sex in the last 12 months with a partner who is 10 or more years older than themselves.

Year	Area	Age group	Male	Female	All

Comments:

Source:

Reported non-regular sexual partnerships

Prevention indicator: Proportion of young people 15-24 having at least one sex partner other than a regular partner in the last 12 months.

Year	Male	Female

Comments:

Source:

Knowledge and behaviour (continued)Ever used a condom

Percentage of people who ever used a condom.

Year	Area	Age group	Male	Female	All
------	------	-----------	------	--------	-----

Comments:

Source:

Adolescent pregnancy

Percentage of teenagers 15-19 who are mothers or pregnant with their first child.

Year	Percentage
------	------------

Comments:

Source:

Age at first sexual experience

Proportion of 15-19 year olds who have had sex before age 15.

Year	Male	Female
------	------	--------

Comments:

Source:

Prevention indicators

Male and female condoms are the only technology available that can prevent sexual transmission of HIV and other STIs. Persons exposing themselves to the risk of sexual transmission of HIV should have consistent access to high quality condoms. AIDS Programs implement activities to increase both availability of and access to condoms. These activities should be monitored and have resources directed to problem areas. The indicator below highlights the availability of condoms. However, even if condoms are widely available, this does not mean that individuals can or do access them.

Condom availability nationwide

Total number of condoms available for distribution nationwide during the preceding 12 months, divided by the total population aged 15-49.

Year	N	Rate
------	---	------

Comments:

Source:

Prevention of mother-to-child transmission (MTCT) nationwide

Percentage of women who were counselled during antenatal care for their most recent pregnancy, accepted an offer of testing and received their test results, of all women who were pregnant at any time in the preceding two years.

Year	N	Rate
------	---	------

Comments:

Source:

Blood safety programs aim to ensure that the majority of blood units are screened for HIV and other infectious agents. This indicator gives an idea of the overall percentage of blood units that have been screened to high enough standards that they can confidently be declared free of HIV.

Screening of blood transfusions nationwide

Percentage of blood units transfused in the last 12 months that have been adequately screened for HIV according to national or WHO guidelines.

Year	N	Rate
------	---	------

Comments:

Source:

Sources

Data presented in this Epidemiological Fact Sheet come from several sources, including global, regional and country reports, published documents and articles, posters and presentations at international conferences, and estimates produced by UNAIDS, WHO and other United Nations agencies. This section contains a list of the more relevant sources used for the preparation of the Fact Sheet. Where available, it also lists selected national Web sites where additional information on HIV/AIDS and STI are presented and regularly updated. However, UNAIDS and WHO do not warrant that the information in these sites is complete and correct and shall not be liable whatsoever for any damages incurred as a result of their use.

Baende, E., R. Ryder, F. Behets, et al. 1987 Congenital HIV Transmission at an Upper Middle Class Hospital in Kinshasa II International Symposium: AIDS and Associated Cancers in Africa, Naples, Italy, 10/7-9, Abstract F-2.

Brown, R., K. Kawunda 1990 Sero-Surveillance of HIV Infection in Kananga, Zaire V International Conference: AIDS in Africa, Kinshasa, Zaire, Oct. 10-12, Poster T.P.E.35.

Blum, J., I. Ngulungu, G. Madinga 1990 Relation Entre la Tuberculoses et le Sida V International Conference: AIDS in Africa, Kinshasa, Zaire, Oct. 10-12, Poster W.P.E.3.

Brown, R. C. 1990 Seroprevalence and Clinical Manifestations of HIV-1 Infection in Kananga, Zaire AIDS, vol. 4, no. 12, pp. 1267-1269.

Binanga, A., M. Phillips, Nzila, et al. 1997 Une Sensibilisation Adequate par la Formation des Pairs des Etudiants sur les MST/SIDA Ameliore la Frequentation des . . . Xth International Conference on AIDS and STD in Africa Abidjan, Cote d'Ivoire, 12/7-11, Abstract E.807.

Beni, B. 1998 Transmission Notifications cas de SIDA/MST 1998 Republique Democratique du Congo, Ministere de la Sante Publique et Affaires Sociales, PNLs & BCC/SIDA, unpublished report.

Colebunders, R. L., I. Lebughe, N. Nzila, et al. 1989 Cutaneous Delay-Type Hypersensitivity in Patients with Human Immunodeficiency Virus Infection in Zaire Journal of Acquired Immune Deficiency Syndromes, vol. 2, no. 6, pp. 576-578.

Colebunders, R. L. 1989 Evaluation of the World Health Organization Clinical Case Definition of AIDS among Tuberculosis Patients in Kinshasa, Zaire Journal of Infectious Diseases, vol. 160, no. 5, pp. 902-903.

Democratic Republic of Congo National AIDS Program 1999 Update UNAIDS Epidemiological Fact Sheet UNAIDS.

Denolf, D., J. P. Musongela, N. Nzila, et al. 2001 The HIV Epidemic in Kinshasa, Democratic Republic of Congo International Journal of STD and AIDS, vol. 12, no. 12, p. 832.

Democratic Republic of Congo Ministry of Health 2003 Rapport du Passage de la Serosurveillance 2003 Phase I Republique Democratique du Congo Ministere de la Sante, Programme National de Lutte Contre le VIH/SIDA et les Ist, septembre, unpublished report.

Goubau, P., K. Kazadi, H. Carton, et al. 1991 HTLV-1 in Zaire and its Relationship to HIV VI International Conference on AIDS in Africa, Dakar, Senegal, 12/16-19, Poster T.A.159.

Green, S. D. R., W. A. M. Cutting, J. L. K. Mokili, et al. 1994 Stable Seroprevalence of HIV-1 in Antenatal Women in Rural Bas-Zaire, 1988-1993 AIDS, vol. 8, no. 3, pp. 397-398.

Harms, G., K. Zwingenberger, H. Feldmeier, et al. 1986 Failure to Detect LAV/HTLV-3 Antibodies in Southeastern Zaire Transactions of the Royal Society of Tropical Medicine and Hygiene, vol. 80, no. 6, p. 1003.

Hardy, I., S. R. Green, W. A. M. Cutting, et al. 1989 HIV-1 Seroprevalence in Rural Zaire V International Conference on AIDS, Montreal, 6/4-9, Poster M.G.P. 18.

Kashala, O., L. Lomami, K. Ngalula, et al. 1989 HIV, HTLV-1 and HBV Infection in Pregnant Women From an Urban Population in Zaire V International Conference on AIDS, Montreal, 6/4-9, Poster W.G.O. 30.

Kivuvu, M., H. T. Manoka, M. Tuliza, et al. 1989 HIV Prevalence and Incidence and Sexual Transmitted Disease (STD) as a Risk Factor for HIV Acquisition in Kinshasa Prostitutes IV Internat. Conf.: AIDS and Assoc. Cancers in Africa, Marseille, Oct. 18-20, Poster 060.

Kashala, O., R. Marlink, M. Ilunga, et al. 1994 Infection with Human Immunodeficiency Virus Type-1 (HIV-1) and Human T Cell Lymphotropic Viruses among Leprosy Patients . . . Journal of Infectious Diseases, vol. 169, pp. 296-304.

Kibwa, M. 1994 Surveillance Report of HIV/AIDS Ministry of Public Health, BCC/SIDA, April 26, report.

Kizonde, K., P. Kalonji, K. Magazani, et al. 1992 Infection a VIH Plus Rare a Kasumbalesa (Zaire) Qu'en Zambie Avoisinante VII International Conference on AIDS in Africa, Yaounde, Cameroon, 12/8-11, Abstract T.P.011.

Kalengayi, M. R., N. J. Ilunga, M. R. Nsiala, et al. 1993 HIV and Syphilis Seroprevalence and Risk Factors in Pregnant Women at Antenatal Clinic, Kinshasa University Hospital VIII International Conference on AIDS in Africa, Marrakech, Morocco, 12/12-16, Abstract Th.P.B.052.

Kibwa, M. 1996 HIV/AIDS Epidemiological Surveillance Report: Year 1995 Ministry of Public Health, BCC/SIDA, April 26, report.

Lauwers, M., N. N. Nzila, P. Goubau, et al. 1990 Evaluation of the WHO Clinical Case-Definition of AIDS in a Semi-Rural Setting in Gemena, Zaire V International Conference: AIDS in Africa, Kinshasa, Zaire, Oct. 10-12, Abstract F.P.B.24.

Mann, J. M., N. Nzilambi, P. Piot, et al. 1988 HIV Infection and Associated Risk Factors in Female Prostitutes in Kinshasa, Zaire AIDS, vol. 2, no. 4, pp. 249-254.

Magazani, K., G. Laleman., G. Vercauteran 1990 HIV 1, Hepatitis B and Syphilis Seroprevalence among Pregnant Women Attending the Prenatal Consultation at the Sendwe Hospital.. V International Conference: AIDS in Africa, Kinshasa, Zaire, Oct. 10-12, Poster T.P.E.34.

Magazani, K., G. Laleman, et al. 1990 Sentinel Surveillance of HIV in the Shaba Province (Zaire) V International Conference: AIDS in Africa, Kinshasa, Zaire, Oct. 10-12, Poster T.P.E.7.

Muyembe-Tamfum, L., I. Kela-We 1990 Serologie HIV Systematique dans une Clinique de la Cite a Matonge (Centre Biomedical de Matonge) V International Conference: AIDS in Africa, Kinshasa, Zaire, Oct. 10-12, Poster T.P.E.16.

Mbowa, R. K., N. J. Ilunga, M. R. Nsiala, et al. 1992 HIV Seroprevalence and Risk Factors in Pregnant Women at Antenatal Clinic (ANC), Kinshasa University Hospital VII International Conference on AIDS in Africa, Yaounde, Cameroon, 12/8-11, Poster W.P.184-3.

Malulu, M., M. Nsuami, B. Matela, et al. 1992 Stabilization of HIV-1 Infection Prevalence in Women in Kinshasa: between 1986 and 1989 VII International Conference on AIDS in Africa, Yaounde, Cameroon, 12/8-11, Poster T.P.013.

Magazani, K., G. Laleman, J. H. Perriens, et al. 1993 Low and Stable HIV Seroprevalence in Pregnant Women in Shaba Province, Zaire Journal of Acquired Immune Deficiency Syndromes, vol. 6, no. 4, pp. 419-423.

Minister of Public Health 1993 Serosurveillance Report of HIV Infection Republic of Zaire, National Control Programme Against AIDS, Central Coordination Bureau, BCC/SIDA, Official Report.

Mayala, M., N. Nzila, M. Tuliza 1994 AIDS and Prostitutes in Kinshasa: Is the Situation Becoming Worse? Tenth International Conference on AIDS, Yokohama, Japan, 8/7-12, Abstract P.C.0372.

Mulanga-Kabeya, C., N. Nzilambi, B. Edidi, et al. 1998 Evidence of Stable HIV Seroprevalences in Selected Populations in the Democratic Republic of the Congo AIDS, vol. 12, no. 8, pp. 905-910.

Nzilambi, N., K. M. DeCock, D. N. Forthal, et al. 1988 The Prevalence of Infection with Human Immunodeficiency Virus Over a 10 Year Period in Rural Zaire New England Journal of Medicine, vol. 318, no. 5, pp. 276-279.

N'Galy, B., R. Ryder, H. Francis, et al. 1988 HIV Prevalence in Zaire, 1984 to 1988 IV International Conference on AIDS, Stockholm, 6/13-14, Poster 5632.

Nzila, N., M. Laga, M. A. Thiam, et al. 1991 HIV and Other Sexually Transmitted Diseases among Female Prostitutes in Kinshasa AIDS, vol. 5, no. 6, pp. 715-721.

Nzila, N., B. Malele, M. Kivuvu, et al. 1995 Stabilization of HIV-1 Seroprevalence in Female Prostitutes in Kinshasa, Zaire, Masks a Dynamic Infection IX International Conference on AIDS and STD in Africa, Kampala, Uganda, 12/10-14, Session WeC205.

Nzila, N., B. Malele, M. Kivuvu, et al. 1996 HIV and Syphilis Infections in Female Prostitutes between 1988 and 1995 in Kinshasa, Zaire XI International Conference on AIDS, Vancouver, 7/7-14, Abstract Tu.C.2684.

Newby, R., H. Lovel 2000 Prevalence of HIV, Syphilis and Gonorrhoea in Rural DR Congo XIII International AIDS Conference, Durban, South Africa, 7/9-14, Poster TuPeC3396.

Perriens, J., C. Karahunga, J. C. Willame, et al. 1989 Mortality, Treatment Results and Relapse Rates Of Pulmonary Tuberculosis in African HIV(+) and HIV(-) Patients V International Conference on AIDS, Montreal, 6/4-9, Abstract M.B.O. 38.

Remy, G. 1993 Image Geographique de l'Infection a VIH 1 en Afrique Centrale: Des Discontinuites Remarquables Annales de la Societe Belge de Medecine Tropicale, vol. 73, no. 2, pp. 127-142.

Sehonou, J., D. Francesconi, P. Mencarini, et al. 2001 Seroprevalence de l'Infection a VIH chez les Femmes Enceintes a Zongo, Province de l'Equateur: Republique Democratique du Congo XIIth International Conference on AIDS and STD in Africa, Ouagadougou, Burkina Faso, 12/9-13, Poster 13PT5-442.

U.S. Department of State 2000 Joint USAID Kinshasa/WHO/CDC/USAID Team Trip to Goma, North-Kivu in the Democratic Republic of Congo Unclassified Cable, June, Kinshasa 003673.

Wewalka, G., F. Heinz, A. Prinz, et al. 1987 Correlation between HIV Infections and Risk Factors in a Rural Population in Northern Zaire Mitt. Oster. Gesell. Trop. Parasitol., vol. 9, no. 11, pp. 215-224, Abs. in Bur. Hyg. and Trop. Dis.

Welo, K., M. Almaviva, W. Maganga, et al. 1991 Seroprevalence du VIH 1 au Zaire La Presse Medicale, vol. 20, no. 35, pp. 1717-1719.

Wannan, G. J., W. A. M. Cutting, P. R. Fisher 1997 HIV Seroprevalence amongst Pregnant Women in Northeastern Zaire International Journal of STD and AIDS, vol. 8, no. 5, pp. 317-319.

Zaire Minister of Public Health 1994 Epidemiological Surveillance Report: 1986-1994 Republic of Zaire, Ministry of Public Health, National Control Program of AIDS/STD, Central Coordination Bureau, BCC/SIDA, August, official report.

Websites: www.aids.africa.com

Annex: HIV surveillance by site

Group	Area	1987	1988	1989	1990	1991	1992	1993	1994	1995	1996	1997	1998	1999	2000	2001	2002	2003			
Pregnant women	Major urban areas	Binza Meteo, Kinshasa																	3.92		
		Binza, Kinshasa					11.07	7.24	6.95		3.93	3.20	2.70		2.70						
		Boyambi, Kinshasa										5.10	6.20							3.18	
		Centre Biomedical de Matonge, Kinsh	7.36	7.74	15.38	5.49															
		Centres de Sante, Kinshasa					3.99														
		CS Barumbu/Boya mbi, Kinshasa														5.40					
		Kingasani, Kinshasa				5.25	11.07	3.33		5.57	4.68	2.90	3.00			4.10	4.10				4.31
		Kinshasa					4.70		4.60												
		Kinshasa Univ. Hosp., Kinshasa		3.60		3.60			3.08												
		Mama Yemo Hospital, Kinshasa	5.70	7.12	6.51		6.60	10.80													
		Nagliema Hospital, Kinshasa	5.98		4.36		3.50														
		Ngaba, Kinshasa					5.10	4.62		5.23											
		Outside major urban areas	Bunia												6.00						
			Bwamanda												1.54						
	CS Mikalayi, Mikalayi													0.40							
	Demba													1.30							
	Dipumba, Mbuji-Mayi													3.90							
	Gemena, Gemena/semirural				7.90																
	Goma(1), Goma														3.40						
	HGR Karawa, Karawa (rural)														5.30						
	Kabinda														3.90						
	Kalemie						2.76														
	Kananga			3.10	2.53	5.64															
	Kasaji Hospital, Kasaji (rural)															1.00					
	Kasumbalesa, Kasumbalesa (rural)					4.81															
	Kikwit														4.80						
	Kimpese, Kimpese (rural)			4.40	3.56	3.80	3.40		4.01												
	Kindu														0.60						
	Kisangani														4.40						
	Likasi					3.18	2.76														
	Lubumbashi			2.72	3.73	3.43															
	Manono, Manono district																				
Matadi													5.10								
Mbandaka													2.30								
Mbuji-Mayi													6.30								
Mikalayi, Mikalayi (rural)																					
Musoshi				3.29	2.89																
Nyankunde						3.00	3.50						2.50								
Rethy, Rethy (rural)						0.33															
Rwakole, Rwakole (semiurban)						5.50															
Sendwe Hospital, Lubumbashi			2.34										4.70	4.80	8.50						
Vanga, Vanga (rural)																					
Yambuku, Yambuku (rural)																					
Zongo																5.95					
Sex workers	Major urban areas	Centre de Matonge, Kinshasa			38.00																
		Kinshasa		35.20	35.12	30.00	30.20		34.81	30.30			29.00								
	Outside major urban areas	Bumba																			
		Haut-Zaire region					25.40														
		Karawa, Karawa (rural)																			
Lisala																					
Mbuji-Mayi												29.17									
Yambuku, Yambuku (rural)			17.74																		

