

2004  
Update



## Côte d'Ivoire

**EPIDEMIOLOGICAL FACT SHEETS**  
ON HIV/AIDS AND SEXUALLY TRANSMITTED INFECTIONS



Joint United Nations Programme on HIV/AIDS

**UNAIDS**

UNHCR • UNICEF • WFP • UNDP • UNFPA  
UNODC • ILO • UNESCO • WHO • WORLD BANK



World Health  
Organization

## HIV/AIDS estimates

In 2003 and during the first quarter of 2004, UNAIDS and WHO worked closely with national governments and research institutions to recalculate current estimates on people living with HIV/AIDS. These calculations are based on the previously published estimates for 1999 and 2001 and recent trends in HIV/AIDS surveillance in various populations. A methodology developed in collaboration with an international group of experts was used to calculate the new estimates on prevalence and incidence of HIV and AIDS deaths, as well as the number of children infected through mother-to-child transmission of HIV. Different approaches were used to estimate HIV prevalence in countries with low-level, concentrated or generalised epidemics. The current estimates do not claim to be an exact count of infections. Rather, they use a methodology that has thus far proved accurate in producing estimates that give a good indication of the magnitude of the epidemic in individual countries. However, these estimates are constantly being revised as countries improve their surveillance systems and collect more information.

Adults in this report are defined as women and men aged 15 to 49. This age range covers people in their most sexually active years. While the risk of HIV infection obviously continues beyond the age of 50, the vast majority of those who engage in substantial risk behaviours are likely to be infected by this age. The 15 to 49 range was used as the denominator in calculating adult HIV prevalence.

### Estimated number of adults and children living with HIV/AIDS, end of 2003

These estimates include all people with HIV infection, whether or not they have developed symptoms of AIDS, alive at the end of 2003:

Adults and children	570,000		
Low estimate	390,000		
High estimate	820,000		
Adults (15-49)	530,000	Adult rate (%)	7.0
Low estimate	370,000	Low estimate	4.9
High estimate	750,000	High estimate	10.0
Children (0-15)	40,000		
Low estimate	24,000		
High estimate	67,000		
Women (15-49)	300,000		
Low estimate	210,000		
High estimate	420,000		

### Estimated number of deaths due to AIDS

Estimated number of adults and children who died of AIDS during 2003:

Deaths in 2003	47,000
Low estimate	30,000
High estimate	72,000

### Estimated number of orphans

Estimated number of children who have lost their mother or father or both parents to AIDS and who were alive and under age 17 at the end of 2003:

Current living orphans	310,000
Low estimate	200,000
High estimate	440,000

## Assessment of the epidemiological situation 2004

Sentinel surveillance among women attending antenatal care clinics was established in 1986. In 2002, there was a total of 28 sentinel sites in eight districts including eight urban sites and 20 rural sites. Several cross-sectional studies were conducted among female sex workers in Abidjan between 1992 and 2002.

In 2002, the median HIV prevalence in Abidjan was 7.4% while median prevalence among attendees at the other seven urban sites was 10.3% compared to a median prevalence of 5.8% among attendees at rural sites. The HIV prevalence among attendees at rural sites ranged from 1.9% in Yapleu to 11% in Lopou while prevalence among attendees at urban sites ranged from 7.4% in Abidjan to 11.6% in Daloa. Median HIV prevalence data from the same eight antenatal care clinics in urban areas from 1998-2002 show that prevalence declined slightly since 1998.

A series of cross sectional studies conducted among sex workers in Abidjan showed a decline in HIV prevalence from 89% in 1992 to 32% in 1998.

## UNAIDS/WHO Working Group on Global HIV/AIDS and STI Surveillance

Global Surveillance of HIV/AIDS and sexually transmitted infections (STIs) is a joint effort of WHO and UNAIDS. The UNAIDS/WHO Working Group on Global HIV/AIDS and STI Surveillance, initiated in November 1996, guides respective activities. The primary objective of the Working Group is to strengthen national, regional and global structures and networks for improved monitoring and surveillance of HIV/AIDS and STIs. For this purpose, the Working Group collaborates closely with national AIDS programmes and a number of national and international experts and institutions. The goal of this collaboration is to compile the best information available and to improve the quality of data needed for informed decision-making and planning at national, regional, and global levels. The Epidemiological Fact Sheets are one of the products of this close and fruitful collaboration across the globe.

Within this framework, the Fact Sheets collate the most recent country-specific data on HIV/AIDS prevalence and incidence, together with information on behaviours (e.g. casual sex and condom use) which can spur or stem the transmission of HIV.

Not unexpectedly, information on all of the agreed upon indicators was not available for many countries in 2003. However, these updated Fact Sheets do contain a wealth of information which allows identification of strengths in currently existing programmes and comparisons between countries and regions. The Fact Sheets may also be instrumental in identifying potential partners when planning and implementing improved surveillance systems.

The fact sheets can be only as good as information made available to the UNAIDS/WHO Working Group on Global HIV/AIDS and STI Surveillance. Therefore, the Working Group would like to encourage all programme managers as well as national and international experts to communicate additional information to them whenever such information becomes available. The Working Group also welcomes any suggestions for additional indicators or information proven to be useful in national or international decision-making and planning.

## Basic indicators

For consistency reasons the data used in the table below are taken from official UN publications.

DEMOGRAPHIC DATA	YEAR	ESTIMATE	SOURCE
Total population (thousands)	2004	16,897	UN population division database
Female population aged 15-24 (thousands)	2004	1,918	UN population division database
Population aged 15-49 (thousands)	2004	8,187	UN population division database
Annual population growth rate (%)	1992-2002	2.1	UN population division database
% of population in urban areas	2003	44.7	UN population division database
Average annual growth rate of urban population	2000-2005	2.6	UN population division database
Crude birth rate (births per 1,000 pop.)	2004	35	UN population division database
Crude death rate (deaths per 1,000 pop.)	2004	19.9	UN population division database
Maternal mortality rate (per 100,000 live births)	2000	690	WHO (WHR2004)/UNICEF
Life expectancy at birth (years)	2002	45.3	World Health Report 2004, WHO
Total fertility rate	2002	4.8	World Health Report 2004, WHO
Infant mortality rate (per 1,000 live births)	2000	113	World Health Report 2004, WHO
Under 5 mortality rate (per 1,000 live births)	2000	167	World Health Report 2004, WHO

SOCIO-ECONOMIC DATA	YEAR	ESTIMATE	SOURCE
Gross national income, ppp, per capita (Int.\$)	2002	1,430	World Bank
Gross domestic product, per capita % growth	2001-2002	-3.0	World Bank
Per capita total expenditure on health (Int.\$)	2001	127	World Health Report 2004, WHO
General government expenditure on health as % of total expenditure on health	2001	16	World Health Report 2004, WHO
Total adult illiteracy rate	2000	51.4	UNESCO
Adult male illiteracy rate	2000	40.5	UNESCO
Adult female illiteracy rate	2000	62.8	UNESCO
Gross primary school enrolment ratio, male	2000/2001	89	UNESCO
Gross primary school enrolment ratio, female	2000/2001	68	UNESCO
Gross secondary school enrolment ratio, male	2000/2001	30	UNESCO
Gross secondary school enrolment ratio, female	2000/2001	17	UNESCO

### Contact address

UNAIDS/WHO Working Group on Global  
HIV/AIDS and STI Surveillance  
20, Avenue Appia  
CH - 1211 Geneva 27  
Switzerland  
Fax: +41-22-791-4834

email: [hivstrategicinfo@who.int](mailto:hivstrategicinfo@who.int) or  
[estimates@unaids.org](mailto:estimates@unaids.org)

website: <http://www.who.int/hiv>  
<http://www.unaids.org>

Extracts of the information contained in these fact sheets may be reviewed, reproduced or translated for research or private study but not for sale or for use in conjunction with commercial purposes. Any use of information in these fact sheets should be accompanied by the following acknowledgment "UNAIDS/WHO epidemiological fact sheets on HIV/AIDS and Sexually Transmitted Infections, 2004 Update".

## HIV prevalence in different populations

This section contains information about HIV prevalence in different populations. The data reported in the tables below are mainly based on the HIV database maintained by the United States Bureau of the Census where data from different sources, including national reports, scientific publications and international conferences are compiled. To provide a simple overview of the current situation and trends over time, summary data are given by population group, geographical area (Major Urban Areas versus Outside Major Urban Areas), and year of survey. Studies conducted in the same year are aggregated and the median prevalence rates (in percentages) are given for each of the categories. The maximum and minimum prevalence rates observed, as well as the total number of surveys/sentinel sites, are provided with the median, to give an overview of the diversity of HIV-prevalence results in a given population within the country. Data by sentinel site or specific study from which the medians were calculated are printed at the end of this fact sheet.

The differentiation between the two geographical areas Major Urban Areas and Outside Major Urban Areas is not based on strict criteria, such as the number of inhabitants. For most countries, Major Urban Areas were considered to be the capital city and - where applicable - other metropolitan areas with similar socio-economic patterns. The term Outside Major Urban Areas considers that most sentinel sites are not located in strictly rural areas, even if they are located in somewhat rural districts.

### HIV sentinel surveillance\*

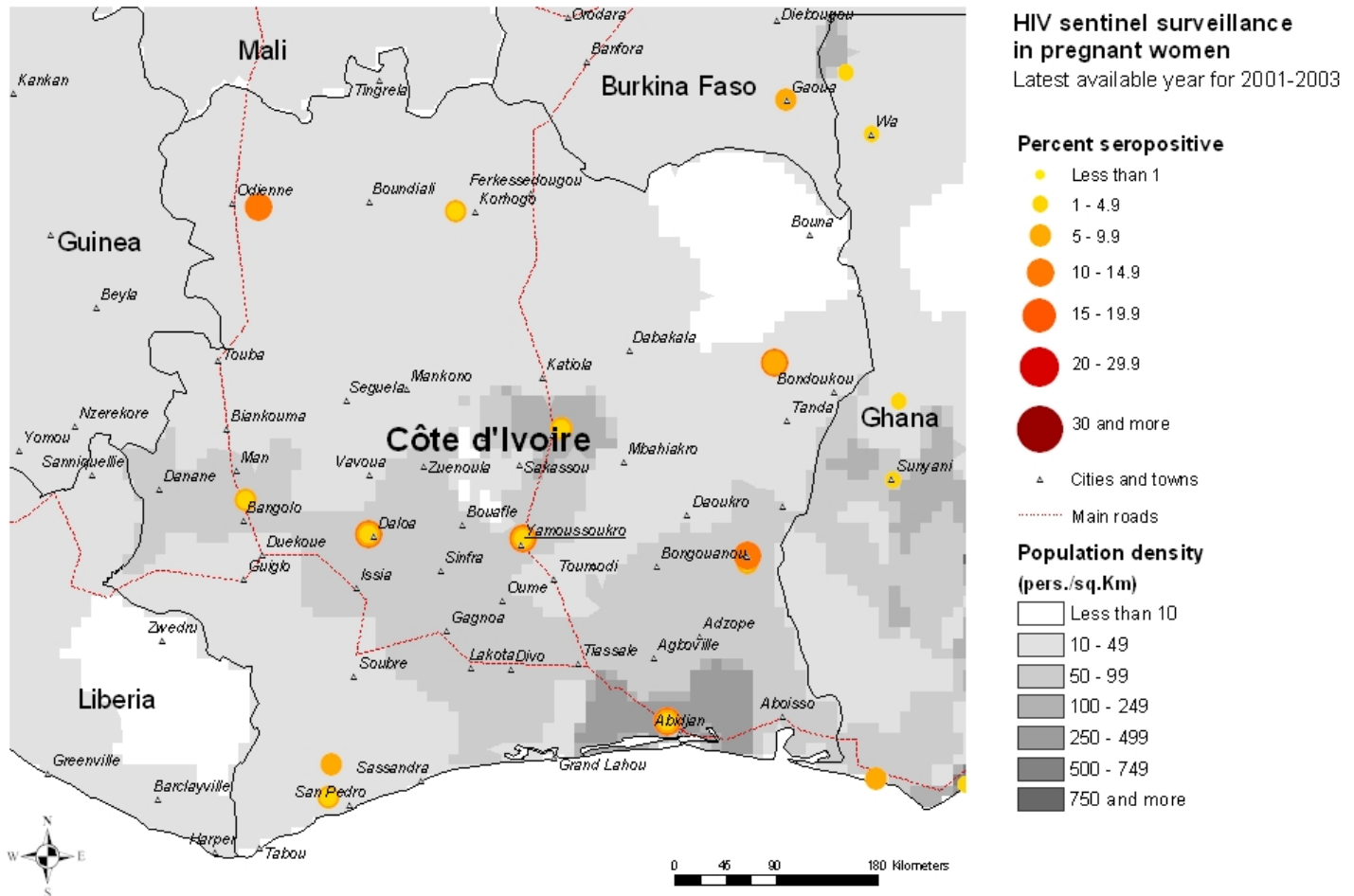
Group	Area		1987	1988	1989	1990	1991	1992	1993	1994	1995	1996	1997	1998	1999	2000	2001	2002	2003		
Pregnant women	Major urban areas	N-Sites	2.00	1.00	1.00	2.00	1.00	2.00	1.00		2.00	3.00	4.00	2.00	1.00	2.00	5.00	4.00			
		Minimum	3.90	8.00	6.00	6.00	11.00	10.00	10.30		13.00	12.38	9.10	12.10	13.26	9.04	4.10	3.00			
		Median	5.95	8.00	6.00	8.35	11.00	12.40	10.30		13.05	13.50	12.75	12.95	13.26	11.27	5.56	6.35			
		Maximum	8.00	8.00	6.00	10.70	11.00	14.80	10.30		13.10	14.00	15.90	13.80	13.26	13.50	11.50	10.00			
	Outside major urban areas	N-Sites	3.00	1.00	1.00									9.00	9.00		9.00	19.00	24.00		
		Minimum	0	1.10	8.00									5.90	8.10		7.10	3.64	1.92		
		Median	2.60	1.10	8.00									9.50	9.80		8.80	7.80	6.95		
		Maximum	3.50	1.10	8.00									13.30	12.80		10.29	13.20	11.61		
	Sex workers	Major urban areas	N-Sites	2.00		1.00	1.00		1.00	1.00	1.00	3.00	1.00	1.00	1.00						
			Minimum	23.80		40.00	62.50		87.00	77.00	66.00	51.00	51.00	61.00	32.00						
			Median	26.55		40.00	62.50		87.00	77.00	66.00	59.00	51.00	61.00	32.00						
			Maximum	29.30		40.00	62.50		87.00	77.00	66.00	71.00	51.00	61.00	32.00						
Outside major urban areas		N-Sites	2.00	1.00	1.00	1.00															
		Minimum	34.23	47.50	41.00	53.00															
		Median	35.62	47.50	41.00	53.00															
		Maximum	37.00	47.50	41.00	53.00															
Injecting drug users	Major urban areas	N-Sites	3.00			3.00	2.00	1.00									1.00				
		Minimum	7.70			16.50	18.20	18.40										25.00			
		Median	9.30			19.00	18.60	18.40										25.00			
		Maximum	32.30			28.70	19.00	18.40										25.00			
	Outside major urban areas	N-Sites	1.00																		
		Minimum	35.38																		
		Median	35.38																		
		Maximum	35.38																		
Men having sex with men	Major urban areas	N-Sites	1.00	1.00	1.00	1.00	1.00	1.00	1.00	1.00	1.00	1.00	1.00	1.00	1.00						
		Minimum	22.50	21.00	35.00	39.00	40.00	41.00	41.00	43.00	43.00	45.00	43.00	43.00	45.00						
		Median	22.50	21.00	35.00	39.00	40.00	41.00	41.00	43.00	43.00	45.00	43.00	43.00	45.00						
		Maximum	22.50	21.00	35.00	39.00	40.00	41.00	41.00	43.00	43.00	45.00	43.00	43.00	45.00						
	Outside major urban areas	N-Sites								1.00	7.00	1.00	1.00	1.00	1.00						
		Minimum								35.00	32.87	39.00	34.00	35.00	34.00						
		Median								35.00	38.50	39.00	34.00	35.00	34.00						
		Maximum								35.00	42.44	39.00	34.00	35.00	34.00						

\*Detailed data by site can be found in the Annex.

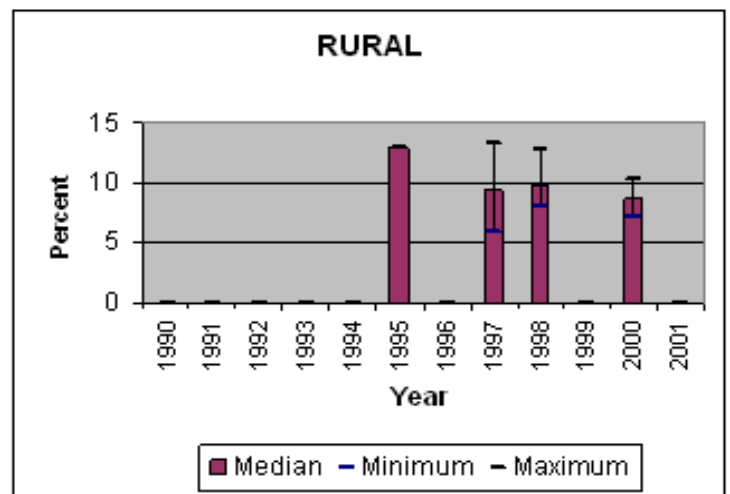
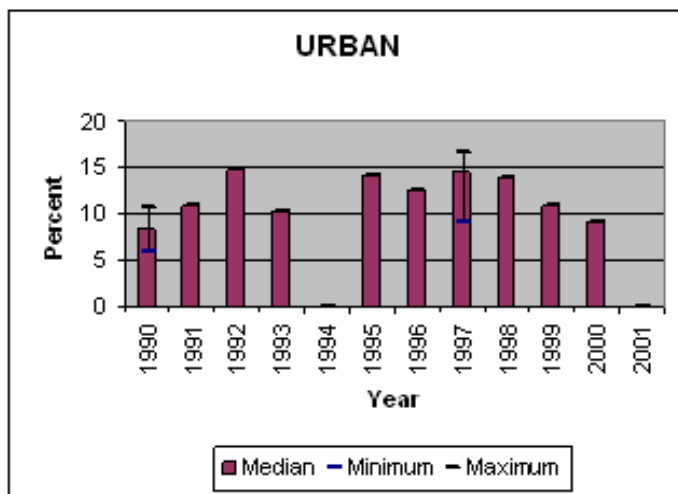
## Maps & charts

Mapping the geographical distribution of HIV prevalence among different population groups may assist in interpreting both the national coverage of the HIV surveillance system as well in explaining differences in levels of prevalence. The UNAIDS/WHO Working Group on Global HIV/AIDS and STI Surveillance, in collaboration with the WHO Public Health Mapping Team, Communicable Diseases, is producing maps showing the location and HIV prevalence in relation to population density, major urban areas and communication routes. For generalized epidemics, these maps show the location of prevalence of antenatal surveillance sites.

Trends in antenatal sentinel surveillance for higher prevalence countries, or in prevalence among selected populations for countries with concentrated epidemics, are a new addition. These are presented for those countries where sufficient data exist.



### Trends in HIV prevalence among antenatal clinic attendees



Median prevalence and ranges are shown in areas with more than one sentinel site.

The boundaries and names shown and the designations used on the map do not imply the expression of any opinion whatsoever on the part of the World Health Organization concerning the legal status of any country, territory, city or area or of its authorities, or concerning the delimitation of its frontiers or boundaries. Dotted lines on maps represent approximate border lines for which there may not yet be full agreement. WHO 2004, all rights reserved.

## Reported AIDS cases

Following WHO and UNAIDS recommendations, AIDS case reporting is carried out in most countries. Data from individual AIDS cases are aggregated at the national level and sent to WHO. However, case reports come from surveillance systems of varying quality. Reporting rates vary substantially from country to country and low reporting rates are common in developing countries due to weaknesses in the health care and epidemiological systems. In addition, countries use different AIDS case definitions. A main disadvantage of AIDS case reporting is that it only provides information on transmission patterns and levels of infection approximately 5-10 years in the past, limiting its usefulness for monitoring recent HIV infections.

Despite these caveats, AIDS case reporting remains an important advocacy tool and is useful in estimating the burden of HIV-related morbidity as well as for short-term planning of health care services. AIDS case reports also provide information on the demographic and geographic characteristics of the affected population and on the relative importance of the various exposure risks. In some situations, AIDS reports can be used to estimate earlier HIV infection patterns using back-calculation. AIDS case reports and AIDS deaths have been dramatically reduced in industrialized countries with the introduction of Anti-Retroviral Therapy (ART).

1979	1980	1981	1982	1983	1984	1985	1986	1987	1988	1989	1990	1991	1992	1993	1994	1995	1996	1997	1998
0	0	0	0	0	0	0	118	466	1193	1930	3189	3894	3863	4015	6566	6727	5935	5949	5685
1999	2000	2001	2002	2003	Total	UNK	Date of last report												
6427					55957	0	8/8/2000												

## Curable sexually transmitted infections (STIs)

The predominant mode of transmission of both HIV and other STIs is sexual intercourse. Measures for preventing sexual transmission of HIV and STIs are the same, as are the target audiences for interventions. In addition, strong evidence supports several biological mechanisms through which STIs facilitate HIV transmission by increasing both HIV infectiousness and HIV susceptibility. Thus, detection and treatment of individuals with STIs is an important part of an HIV control strategy. In summary, if the incidence/prevalence of STIs is high in a country, then there is the possibility of high rates of sexual transmission of HIV. Monitoring trends in STIs provides valuable insight into the likelihood of the importance of sexual transmission of HIV within a country, and is part of second generation surveillance. These trends also assist in assessing the impact of behavioural interventions, such as delaying sexual debut, reducing the number of sex partners and promoting condom use.

Clinical services offering STI care are an important access point for people at high risk for both STIs and HIV. Identifying people with STIs allows for not only the benefit of treating the STI, but for prevention education, HIV testing, identifying HIV-infected persons in need of care, and partner notification for STIs or HIV infection. Consequently, monitoring different components of STI prevention and control can also provide information on HIV prevention and control activities within a country.

### STI syndromes

Reported cases	1996	1997	1998	1999	2000	2001	2002	2003	Incidence 2003
----------------	------	------	------	------	------	------	------	------	----------------

Comments:

Source:

### Syphilis prevalence, women

Percent of blood samples taken from pregnant women aged 15-49 that test positive for syphilis - positive reaginic and treponemal test-during routine screening at selected antenatal clinics.

Year	Area	Rate	Range
------	------	------	-------

Comments:

Source:

### Estimated prevalence of curable STIs among female sex workers

#### - Chlamydia

Year	Area	Rate	Range
2000-2001	Urban	2.8 (rate)	
1997-1999	Urban	7 (rate)	

Comments:

Source: Vuylsteke BL. Assessment of the validity of and adherence to sexually transmitted infection algorithms at a female sex worker clinic in Abidjan, Cote d'Ivoire. Sex Transm Dis. 2003 Apr;30(4):284-91.

#### - Gonorrhoea

Year	Area	Rate	Range
2000-2001	Urban	5.5	
1997-1999	Urban	11	

Comments:

Source: Vuylsteke BL. Assessment of the validity of and adherence to sexually transmitted infection algorithms at a female sex worker clinic in Abidjan, Cote d'Ivoire. Sex Transm Dis. 2003 Apr;30(4):284-91.

Estimated prevalence of curable STIs among female sex workers (continued)**- Syphilis**

Year	Area	Rate	Range
1997-1999	Urban	2	

**Comments:**

**Source:** Ghys PD. Increase in condom use and decline in HIV and sexually transmitted diseases among female sex workers in Abidjan, Cote d'Ivoire, 1991-1998. AIDS. 2002 Jan 25;16(2):251-8.

**- Trichomoniasis**

Year	Area	Rate	Range
2000-2001	Urban	16.7	
1997-1999	Urban	11	

**Comments:**

**Source:** Vuylsteke BL. Assessment of the validity of and adherence to sexually transmitted infection algorithms at a female sex worker clinic in Abidjan, Cote d'Ivoire. Sex Transm Dis. 2003 Apr;30(4):284-91.



## Knowledge and behaviour

In most countries the HIV epidemic is driven by behaviours (e.g.: multiple sexual partners, injecting drug use) that expose individuals to the risk of infection. Information on knowledge and on the level and intensity of risk behaviour related to HIV/AIDS is essential in identifying populations most at risk for HIV infection and in better understanding the dynamics of the epidemic. It is also critical information in assessing changes over time as a result of prevention efforts. One of the main goals of the 2nd generation HIV surveillance systems is the promotion of a standard set of indicators defined in the National Guide (Source: National AIDS Programmes, A Guide to Monitoring and Evaluation, UNAIDS/00.17) and regular behavioural surveys in order to monitor trends in behaviours and to target interventions.

The indicators on knowledge and misconceptions are an important prerequisite for prevention programmes to focus on increasing people's knowledge about sexual transmission, and, to overcome the misconceptions that act as a disincentive to behaviour change. Indicators on sexual behaviour and the promotion of safer sexual behaviour are at the core of AIDS programmes, particularly with young people who are not yet sexually active or are embarking on their sexual lives, and who are more amenable to behavioural change than adults. Finally, higher risk male-male sex reports on unprotected anal intercourse, the highest risk behaviour for HIV among men who have sex with men.

### Knowledge of HIV prevention methods

Prevention indicator: Percentage of young people 15-24 who both correctly identify two ways of preventing the sexual transmission of HIV and who reject three misconceptions about HIV transmission.

Year	Male	Female
2000		16

**Comments:**

**Source:** MICS

### Reported condom use at last higher risk sex (young people 15-24)

Prevention indicator: Proportion of young people reporting the use of a condom during sex with a non-regular partner.

Year	Male	Female
1998	56	25

**Comments:**

**Source:** DHS

### Age-mixing in sexual partnerships among young women

The proportion of young women who have had sex in the last 12 months with a partner who is 10 or more years older than themselves.

Year	Area	Age group	Male	Female	All
------	------	-----------	------	--------	-----

**Comments:**

**Source:**

### Reported non-regular sexual partnerships

Prevention indicator: Proportion of young people 15-24 having at least one sex partner other than a regular partner in the last 12 months.

Year	Male	Female
1998	91	51

**Comments:**

**Source:** DHS

Knowledge and behaviour (continued)Ever used a condom

Percentage of people who ever used a condom.

Year	Area	Age group	Male	Female	All
------	------	-----------	------	--------	-----

Comments:

Source:

Adolescent pregnancy

Percentage of teenagers 15-19 who are mothers or pregnant with their first child.

Year	Percentage
------	------------

Comments:

Source:

Age at first sexual experience

Proportion of 15-19 year olds who have had sex before age 15.

Year	Male	Female
1998	14	22

Comments:

Source: DHS

## Prevention indicators

Male and female condoms are the only technology available that can prevent sexual transmission of HIV and other STIs. Persons exposing themselves to the risk of sexual transmission of HIV should have consistent access to high quality condoms. AIDS Programs implement activities to increase both availability of and access to condoms. These activities should be monitored and have resources directed to problem areas. The indicator below highlights the availability of condoms. However, even if condoms are widely available, this does not mean that individuals can or do access them.

### Condom availability nationwide

Total number of condoms available for distribution nationwide during the preceding 12 months, divided by the total population aged 15-49.

Year	N	Rate
------	---	------

Comments:

Source:

### Prevention of mother-to-child transmission (MTCT) nationwide

Percentage of women who were counselled during antenatal care for their most recent pregnancy, accepted an offer of testing and received their test results, of all women who were pregnant at any time in the preceding two years.

Year	N	Rate
------	---	------

Comments:

Source:

Blood safety programs aim to ensure that the majority of blood units are screened for HIV and other infectious agents. This indicator gives an idea of the overall percentage of blood units that have been screened to high enough standards that they can confidently be declared free of HIV.

### Screening of blood transfusions nationwide

Percentage of blood units transfused in the last 12 months that have been adequately screened for HIV according to national or WHO guidelines.

Year	N	Rate
------	---	------

Comments:

Source:

## Sources

Data presented in this Epidemiological Fact Sheet come from several sources, including global, regional and country reports, published documents and articles, posters and presentations at international conferences, and estimates produced by UNAIDS, WHO and other United Nations agencies. This section contains a list of the more relevant sources used for the preparation of the Fact Sheet. Where available, it also lists selected national Web sites where additional information on HIV/AIDS and STI are presented and regularly updated. However, UNAIDS and WHO do not warrant that the information in these sites is complete and correct and shall not be liable whatsoever for any damages incurred as a result of their use.

- Ali-Napo, L., G. La Ruche, N. Messou, et al. 1997 Prevalences des MST et de l'Infection a VIH Chez la Femme Enceinte a Abidjan, Cote d'Ivoire, 1996-1997 Xth International Conference on AIDS and STD in Africa Abidjan, Cote d'Ivoire, 12/7-11, Session B.390.
- Abouya, L., I. M. Coulibaly, S. Z. Wiktor, et al. 1998 The Cote d'Ivoire National HIV Counseling and Testing Program for Tuberculosis Patients: Implementation and Analysis of . . . AIDS, vol. 12, no. 5, pp. 505-512.
- Akaki, O., S. Kassim, A. N. Ackah, et al. 2000 Trends in HIV Infection in the Main Tuberculosis (TB) Outpatients Centers of Cote d'Ivoire: Analysis of Data from 1989 to 1999 XIII International AIDS Conference, Durban, South Africa, 7/9-14, Poster MoPeC2437.
- Brattegaard, K., R. Doorly, J. Kouadio, et al. 1991 Alternative Screening and Supplemental Testing Strategies for HIV-1 and HIV-2 Infections VII International Conference on AIDS, Florence, Italy, 6/16-21, Abstract M.C.88.
- Brattegaard, K., D. Yavo, J. Kouadio, et al. 1993 Evaluation of a Mixed Elisa Screening Test for HIV-1 and HIV2 Antibodies in Abidjan, Cote d'Ivoire VIII International Conference on AIDS in Africa, Marrakech, Morocco, 12/12-16, Abstract W.P.A.016.
- Denis, F., G. Gershy-Damet, M. Lhuillier, et al. 1987 Prevalence of Human T-Lymphotropic Retroviruses Type III (HIV) and Type IV in Ivory Coast Lancet, Feb. 21, vol. 1, pp. 408-411.
- Diallo, M. O., A. N. Ackah, M. F. Lafontaine, et al. 1992 HIV-1 and HIV-2 Infections in Men Attending Sexually Transmitted Disease Clinics in Abidjan, Cote d'Ivoire AIDS, vol. 6, no. 6, pp. 581-585.
- Doorly, R., A. Kadio, K. Brattegaard, et al. 1991 Trends in HIV-1 and HIV-2 Infections in Abidjan, Cote d'Ivoire, 1987-1990 VII International Conference on AIDS, Florence, Italy, 6/16-21, Session M.C.42.
- Diallo, M. O., A. Amouzou, Z. P. Bih, et al. 1991 HIV Serosurveillance among Men Attending an STD Clinic in Abidjan, Cote d'Ivoire VI International Conference on AIDS in Africa, Dakar, Senegal, 12/16-19, Poster W.A.140.
- Diallo, M. O., V. Traore, M. Maran, et al. 1992 Sexually Transmitted Diseases and HIV-1/HIV-2 Infections among Pregnant Women Attending an Antenatal Clinic in Abidjan, Cote . . . VII International Conference on AIDS in Africa, Yaounde, Cameroon, 12/8-11, Poster T.P.041.
- Diaby, L., S. Z. Wiktor, A. Ba., et al. 1996 Evaluation of an HIV Counseling and Testing Program for Pregnant Women in an Antenatal Clinic in Abidjan, Cote d'Ivoire XI International Conference on AIDS, Vancouver, 7/7-14, Poster Th.C.4831.
- Ettiegne-Traore, V., P. D. Ghys, C. Maurice, et al. 1998 Evaluation of an HIV Saliva Test for the Detection of HIV-1 and HIV-2 Antibodies in High-Risk Populations in Abidjan . . . International Journal of STD and AIDS, vol. 9, no. 3, pp. 173-174.
- Greenberg, A., I. M. Coulibaly, A. Kadio, et al. 1997 Trends in the HIV and HIV-2 Epidemics in Abidjan, Cote d'Ivoire: 11 Years of HIV Serosurveillance at Projet Retro-CI Xth International Conference on AIDS and STD in Africa, Abidjan, Cote d'Ivoire, 12/7-11, Session B.041.
- Ghys, P. D., K. Fransen, M. O. Diallo, et al. 1997 The Associations between Cervicovaginal HIV Shedding, Sexually Transmitted Diseases and Immunosuppression in Female Sex . . . AIDS, vol. 11, no. 12, pp. F85-F93.
- Ghys, P. D., M. O. Diallo, V. E. Traore, et al. 2002 Increase in Condom Use and Decline in HIV and Sexually Transmitted Diseases among Female Sex Workers in Abidjan . . . AIDS, vol. 16, no. 2, pp. 251-258.
- Koffi, K., G. M. Gershy-Damet, M. Peeters, et al. 1992 Rapid Spread of HIV Infections in Abidjan, Ivory Coast, 1987-1990 European Journal of Clinical Microbiology and Infectious Diseases, vol. 11, no. 3, pp. 271-273.
- Kassim, S., S. Z. Wiktor, C. Maurice, et al. 1998 Prevalence of HIV and Syphilis Infections among Pregnant Women Attending Urban Antenatal Clinics in Cote d'Ivoire, 1997 12th World AIDS Conference, Geneva, 6/28 - 7/3, Poster 13111.
- Koblavi, S., K. N'guessan, D. Yavo, et al. 1999 Field Evaluation of Rapid HIV Serologic Tests for the Diagnosis of HIV-1 and HIV-2 Infections in Women Attending an Antenatal. . . XI International Conference on AIDS and STDs in Africa, Lusaka, Zambia, 9/12-16, Poster 15PT512-16.
- Kone, A., P. J. Zerbo, M. Ybou, et al. 2000 STD Management in Urban Areas: The Abobo Sector in Abidjan, Cote d'Ivoire XIII International AIDS Conference, Durban, South Africa, 7/9-14, Abstract WePeC4357.
- Kunombo, E. A. 2001 Revision of HIV/AIDS and STI Surveillance Form: Cote d'Ivoire WHO Regional Office for Africa, DCC, WHO/AFRO Regional Programme on HIV/AIDS, unpublished tables.
- Kunombo, E. A. 2002 Revision of HIV/AIDS and STI Surveillance Form: Cote d'Ivoire WHO Regional Office for Africa, DCC, WHO/AFRO Regional Programme on HIV/AIDS, unpublished tables.
- Noba, V., K. Sidibe, F. Kaba, et al. 2001 Voluntary Screening and Prevention of Mother-to-Child Transmission of HIV among Pregnant Women in Cote d'Ivoire: A Public . . . 8th Conference on Retroviruses and Opportunistic Infection, Foundation for Retrovirology and Human Health, Chicago, Illinois, 2/4-8, Online Abstract 704.
- Odehouri, K., K. M. DeCock, J. W. Krebs, et al. 1989 HIV-1 and HIV-2 Associated with AIDS in Abidjan, Cote d'Ivoire AIDS, vol 3, no. 8, pp. 509-512.
- Quattara, S. A., D. Diallo, M. Meite, et al. 1988 Epidemiology of HIV1 and HIV2 Infections in Ivory Coast Medecine Tropicale, vol. 48, no. 4, pp. 375-379.

Ouattara, S. A., M. Gody, G. de-The 1989 Prevalence of HTLV-1 Compared to HIV-1 and HIV-2 Antibodies in Different Groups in the Ivory Coast (West Africa) *Journal of Acquired Immune Deficiency Syndromes*, vol. 2, no. 5, pp. 481-485.

PNLS 1991 Reunion avec GPA 9 Mai 1991 - Geneve World Health Organization, document.

PNLS-Retroci 2000 HIV Seroprevalence among Antenatal Clinic Attendees in Cote d'Ivoire WHO-AFRO HIV Surveillance Report.

Sylla-Koko, F., C. Ezoua-Ehui, M. F. Traore-Anaky, et al. 1995 Seroprevalence de l'Infection a VIH dans les Consultations Prenatales d'Abidjan, Cote d'Ivoire IX International Conference on AIDS and STD in Africa, Kampala, Uganda, 12/10-14, Poster TuC626.

Sylla Koko, F., R. Ramon, V. Noba, et al. 1997 Evolution de la Prevalence de l'Infection par le VIH dans des Consultations Prenatales de la Formation Sanitaire Urbaine de ... Xth International Conference on AIDS and STD in Africa Abidjan, Cote d'Ivoire, 12/7-11, Poster A.630.

Sassan-Morokro, M., J. Koffi, T. H. Roels, et al. 1999 Trends in HIV Prevalence among Pregnant Women Attending Urban Antenatal Clinics in Cote d'Ivoire, 1997-1998 XI International Conference on AIDS and STDs in Africa, Lusaka, Zambia, 9/12-16, Session 14ET3-1.

Sibailly, T. S., E. R. Ekpini, A. Kamelan-Tanoh, et al. 2000 Impact of On-Site HIV Rapid Testing with Same-Day Post-Test Counseling on Acceptance of Short-Course Zidovudine for the ... XIII International AIDS Conference, Durban, South Africa, 7/9-14, Abstract WeOrC549.

Traore-Ettiegne, V., M. O. Diallo, A. Amouzou, et al. 1992 Trends in HIV-1 and HIV-2 Infections in Men Attending an Abidjan Sexually Transmitted Diseases Clinic, 1990-1992 VII International Conference on AIDS in Africa, Yaounde, Cameroon, 12/8-11, Poster T.P.027.

Verdier, M., A. Sangare, G. Leonard, et al. 1987 Co-Exposure to Three Human Retroviruses (HTLV-1, HIV-1, HIV-2) in Prostitutes and Pregnant Women in Ivory Coast II International Symposium: AIDS and Associated Cancers in Africa, Naples, Italy, 10/7-9, Poster TH-17.

Verdier, M., A. Sangare, G. Leonard, et al. 1988 HIV-1, HIV-2 and HTLV-1 Prevalence in Pregnant Women of Seven Areas of Ivory Coast III International Conference: AIDS and Associated Cancers in Africa, Sept. 14-16, Poster FP 17.

Verdier, M., F. Denis, A. Sangare, et al. 1989 Prevalence of Antibody to Human T Cell Leukemia Virus Type 1 (HTLV-1) in Populations of Ivory Coast, West Africa *Journal of Infectious Diseases*, vol. 160, no. 3, pp. 363-370.

Wiktor, S. Z., E. Ekpini, J. M. Karon, et al. 1999 Short-Course Oral Zidovudine for Prevention of Mother-to-Child Transmission of HIV-1 in Abidjan, Cote d'Ivoire *Lancet*, vol. 353, no. 9155, pp. 781-785.

**Websites:**     [www.aids.africa.com](http://www.aids.africa.com)

## Annex: HIV surveillance by site

Group	Area	1987	1988	1989	1990	1991	1992	1993	1994	1995	1996	1997	1998	1999	2000	2001	2002	2003	
Pregnant women	Outside major urban areas	CSR Zagne, Man district/ rural																7.14	
		CSR Zaluouan, Daloa district/ rura															5.45	2.00	
		Daloa											8.10	8.40		8.10			
		Korhogo											6.00	8.40		7.90			
		Man											10.20	10.20		8.92			
		Odienne											10.30	9.10		9.60			
		Odienne, Odienne region	0		8.00														
		PMI Bondoukou, Bondoukou district/																9.81	10.36
		PMI Bouake, Bouake district/ urban																8.17	
		PMI Daloa, Daloa district/ urban																7.80	11.61
		PMI Korhogo, Korhogo district/ urba																10.10	8.30
		PMI Man, Man district/ urban																10.70	8.46
		PMI Odienne, Odienne district/ urba																10.30	
		PMI San Pedro, San Pedro district/																7.61	8.20
		PMI Yamoussoukro, Yamoussoukro dist																11.00	10.33
		San Pedro												9.50	8.10		8.80		
		Tanda, Tanda region	3.50																
		Yamoussoukro												11.30	12.20		7.30		
		Abengourou												13.30	12.00		10.29	13.20	10.80
		Azaguie, Azaguie region	2.60																
		Bodokro, Bouake district/ rural																	6.76
		Bondoukou												5.90	12.80		9.70		
		Bouake			1.10									6.00	9.80		7.10		
		Bozi, Daloa district/ rural																4.17	5.81
		CSR Amelekia, Abengourou district/																8.57	7.00
		CSR Aniassue, Abengourou district/																3.75	4.67
		CSR Appimandoum, Bondoukou district																	5.97
		CSR Boniere, Bouake district/ rural																3.80	
		CSR Djouroutou, San -Pedro district/																	6.90
		CSR Gueyo, San-Pedro district/ rura																	8.00
		CSR Guiende, Bondoukou district/ ru																	5.70
		CSR Iboguhe, Daloa district/ rural																3.64	4.00
		CSR Kafiohaha, Korhogo district/ ru																	2.17
		CSR Kokoumbo, Yamoussoukro district																	2.47
		CSR Koneffa, Daloa district/ rural																5.56	
		CSR Molonou, Yamoussoukro district/																	9.00
CSR Ondefidouo, Bondoukou district/																	7.69		
CSR Sankadiokro, Abengourou distric																7.92	5.21		
CSR Tortiya, Bouake district/ rural																7.34			

Group	Area	1987	1988	1989	1990	1991	1992	1993	1994	1995	1996	1997	1998	1999	2000	2001	2002	2003	
Pregnant women	Outside major urban areas	CSR Yabayo, San-Pedro district/ rur																3.53	
		CSR Yapleu, Man district/ rural																	1.92
	Major urban areas	Abidjan (1), Abidjan	3.90	8.00	6.00	10.70	11.00	10.00	10.30		13.00	14.00	12.00			9.04			
		Abidjan (2), Abidjan				6.00													
		Attending clinics, Abidjan	8.00					14.80			13.10	12.38	9.10	13.80	13.26				
		CSR Attinguie, Abidjan district/ ru															6.02	5.30	
		CSR Bacanda, Abidjan district/ rura															4.10	3.00	
		CSR Lopou, Abidjan district/ rural															4.50	10.00	
		Four health structures, Abidjan														13.50			
		HG Alepe, Abidjan district/ rural															5.56		
Sex workers	Major urban areas	Abidjan (1), Abidjan	23.80		40.00	62.50					71.00								
		Abidjan (2), Abidjan	29.30								59.00								
		Clinque de Confiance, Abidjan						87.00	77.00	66.00	51.00	51.00	61.00	32.00					
	Outside major urban areas	Five regions	34.23																
		Odienne, Odienne region Tortiya	37.00	47.50	41.00	53.00													
	STI patients	Major urban areas	Abidjan (1), Abidjan	9.30			19.00	18.20	18.40							25.00			
			Abidjan (2), Abidjan	7.70			16.50	19.00											
			Abidjan Univ. Dept. of Dermatology, L'Institut d'Hygiene de Treichville	32.30			28.70												
		Outside major urban areas	Five regions	35.38															
		Men having sex with men																	
Tuberculosis patients	Major urban areas	Abidjan (1), Abidjan	22.50	21.00	35.00	39.00	40.00	41.00	41.00	43.00	43.00	45.00	43.00	43.00	45.00				
	Outside major urban areas	Abengourou									38.57								
		Bouake									38.50								
		Daloa									39.80								
		Gagnoa									34.11								
		Korhogo									42.44								
		Man									32.87								
Six sites								35.00	34.00	39.00	34.00	35.00	34.00						