

2004  
Update



# Cameroon

**EPIDEMIOLOGICAL FACT SHEETS**  
ON HIV/AIDS AND SEXUALLY TRANSMITTED INFECTIONS



Joint United Nations Programme on HIV/AIDS

**UNAIDS**

UNHCR • UNICEF • WFP • UNDP • UNFPA  
UNODC • ILO • UNESCO • WHO • WORLD BANK



World Health  
Organization

## HIV/AIDS estimates

In 2003 and during the first quarter of 2004, UNAIDS and WHO worked closely with national governments and research institutions to recalculate current estimates on people living with HIV/AIDS. These calculations are based on the previously published estimates for 1999 and 2001 and recent trends in HIV/AIDS surveillance in various populations. A methodology developed in collaboration with an international group of experts was used to calculate the new estimates on prevalence and incidence of HIV and AIDS deaths, as well as the number of children infected through mother-to-child transmission of HIV. Different approaches were used to estimate HIV prevalence in countries with low-level, concentrated or generalised epidemics. The current estimates do not claim to be an exact count of infections. Rather, they use a methodology that has thus far proved accurate in producing estimates that give a good indication of the magnitude of the epidemic in individual countries. However, these estimates are constantly being revised as countries improve their surveillance systems and collect more information.

Adults in this report are defined as women and men aged 15 to 49. This age range covers people in their most sexually active years. While the risk of HIV infection obviously continues beyond the age of 50, the vast majority of those who engage in substantial risk behaviours are likely to be infected by this age. The 15 to 49 range was used as the denominator in calculating adult HIV prevalence.

### Estimated number of adults and children living with HIV/AIDS, end of 2003

These estimates include all people with HIV infection, whether or not they have developed symptoms of AIDS, alive at the end of 2003:

Adults and children	560,000		
Low estimate	390,000		
High estimate	810,000		
Adults (15-49)	520,000	Adult rate (%)	6.9
Low estimate	360,000	Low estimate	4.8
High estimate	740,000	High estimate	9.8
Children (0-15)	43,000		
Low estimate	26,000		
High estimate	72,000		
Women (15-49)	290,000		
Low estimate	200,000		
High estimate	420,000		

### Estimated number of deaths due to AIDS

Estimated number of adults and children who died of AIDS during 2003:

Deaths in 2003	49,000
Low estimate	32,000
High estimate	74,000

### Estimated number of orphans

Estimated number of children who have lost their mother or father or both parents to AIDS and who were alive and under age 17 at the end of 2003:

Current living orphans	240,000
Low estimate	160,000
High estimate	340,000

## Assessment of the epidemiological situation 2004

HIV sentinel surveillance among women attending antenatal care (ANC) clinics was established in 1989. Between 1996-1999, sites were not used consistently, but sentinel surveillance among ANC women was reinforced in 2000 with 27 ANC sites covering all ten provinces. Data on HIV prevalence among the general population of people aged 15-49 years and sex workers were also collected in Yaoundé in 1997/1998 in the context of a four-city UNAIDS study.

In 2000, HIV prevalence among ANC attendees in 28 sites was 10.8%; HIV prevalence in Yaoundé was 11.2%. The median HIV prevalence among young women aged 15-24 years was 11.9%, ranging from 7.5% in Littoral province to 19.6% in Adamawa province. Among women aged 15-19 years, the median HIV prevalence was 11.5%, ranging from 2.8% in Littoral province to 21.9% in Adamawa province.

In the Yaoundé study, women were more likely to be infected with HIV than men; HIV prevalence rates were 7.8% among women and 4.1% among men. HIV prevalence rates were much higher among young women than among men of the same age (3.4% and 0.0% for women and men aged 15-19 years respectively, and 9.3% and 1.4% among women and men aged 20-24 years respectively). HIV prevalence among sex workers tested in Yaoundé increased from 5.6% in 1990 to 45.3% in 1993 and declined to 34% in 1997/1998.

## UNAIDS/WHO Working Group on Global HIV/AIDS and STI Surveillance

Global Surveillance of HIV/AIDS and sexually transmitted infections (STIs) is a joint effort of WHO and UNAIDS. The UNAIDS/WHO Working Group on Global HIV/AIDS and STI Surveillance, initiated in November 1996, guides respective activities. The primary objective of the Working Group is to strengthen national, regional and global structures and networks for improved monitoring and surveillance of HIV/AIDS and STIs. For this purpose, the Working Group collaborates closely with national AIDS programmes and a number of national and international experts and institutions. The goal of this collaboration is to compile the best information available and to improve the quality of data needed for informed decision-making and planning at national, regional, and global levels. The Epidemiological Fact Sheets are one of the products of this close and fruitful collaboration across the globe.

Within this framework, the Fact Sheets collate the most recent country-specific data on HIV/AIDS prevalence and incidence, together with information on behaviours (e.g. casual sex and condom use) which can spur or stem the transmission of HIV.

Not unexpectedly, information on all of the agreed upon indicators was not available for many countries in 2003. However, these updated Fact Sheets do contain a wealth of information which allows identification of strengths in currently existing programmes and comparisons between countries and regions. The Fact Sheets may also be instrumental in identifying potential partners when planning and implementing improved surveillance systems.

The fact sheets can be only as good as information made available to the UNAIDS/WHO Working Group on Global HIV/AIDS and STI Surveillance. Therefore, the Working Group would like to encourage all programme managers as well as national and international experts to communicate additional information to them whenever such information becomes available. The Working Group also welcomes any suggestions for additional indicators or information proven to be useful in national or international decision-making and planning.

## Basic indicators

For consistency reasons the data used in the table below are taken from official UN publications.

DEMOGRAPHIC DATA	YEAR	ESTIMATE	SOURCE
Total population (thousands)	2004	16,296	UN population division database
Female population aged 15-24 (thousands)	2004	1,718	UN population division database
Population aged 15-49 (thousands)	2004	7,708	UN population division database
Annual population growth rate (%)	1992-2002	2.4	UN population division database
% of population in urban areas	2003	51	UN population division database
Average annual growth rate of urban population	2000-2005	3.4	UN population division database
Crude birth rate (births per 1,000 pop.)	2004	34.7	UN population division database
Crude death rate (deaths per 1,000 pop.)	2004	17.6	UN population division database
Maternal mortality rate (per 100,000 live births)	2000	730	WHO (WHR2004)/UNICEF
Life expectancy at birth (years)	2002	48.1	World Health Report 2004, WHO
Total fertility rate	2002	4.7	World Health Report 2004, WHO
Infant mortality rate (per 1,000 live births)	2000	91	World Health Report 2004, WHO
Under 5 mortality rate (per 1,000 live births)	2000	155	World Health Report 2004, WHO

SOCIO-ECONOMIC DATA	YEAR	ESTIMATE	SOURCE
Gross national income, ppp, per capita (Int.\$)	2002	1,640	World Bank
Gross domestic product, per capita % growth	2001-2002	2.2	World Bank
Per capita total expenditure on health (Int.\$)	2001	42	World Health Report 2004, WHO
General government expenditure on health as % of total expenditure on health	2001	37.1	World Health Report 2004, WHO
Total adult illiteracy rate	2000	28.7	UNESCO
Adult male illiteracy rate	2000	20.9	UNESCO
Adult female illiteracy rate	2000	36.3	UNESCO
Gross primary school enrolment ratio, male	2000/2001	115	UNESCO
Gross primary school enrolment ratio, female	2000/2001	100	UNESCO
Gross secondary school enrolment ratio, male	2000/2001	not available	UNESCO
Gross secondary school enrolment ratio, female	2000/2001	not available	UNESCO

### Contact address

UNAIDS/WHO Working Group on Global  
HIV/AIDS and STI Surveillance  
20, Avenue Appia  
CH - 1211 Geneva 27  
Switzerland  
Fax: +41-22-791-4834

email: [hivstrategicinfo@who.int](mailto:hivstrategicinfo@who.int) or  
[estimates@unaids.org](mailto:estimates@unaids.org)

website: <http://www.who.int/hiv>  
<http://www.unaids.org>

Extracts of the information contained in these fact sheets may be reviewed, reproduced or translated for research or private study but not for sale or for use in conjunction with commercial purposes. Any use of information in these fact sheets should be accompanied by the following acknowledgment "UNAIDS/WHO epidemiological fact sheets on HIV/AIDS and Sexually Transmitted Infections, 2004 Update".

## HIV prevalence in different populations

This section contains information about HIV prevalence in different populations. The data reported in the tables below are mainly based on the HIV database maintained by the United States Bureau of the Census where data from different sources, including national reports, scientific publications and international conferences are compiled. To provide a simple overview of the current situation and trends over time, summary data are given by population group, geographical area (Major Urban Areas versus Outside Major Urban Areas), and year of survey. Studies conducted in the same year are aggregated and the median prevalence rates (in percentages) are given for each of the categories. The maximum and minimum prevalence rates observed, as well as the total number of surveys/sentinel sites, are provided with the median, to give an overview of the diversity of HIV-prevalence results in a given population within the country. Data by sentinel site or specific study from which the medians were calculated are printed at the end of this fact sheet.

The differentiation between the two geographical areas Major Urban Areas and Outside Major Urban Areas is not based on strict criteria, such as the number of inhabitants. For most countries, Major Urban Areas were considered to be the capital city and - where applicable - other metropolitan areas with similar socio-economic patterns. The term Outside Major Urban Areas considers that most sentinel sites are not located in strictly rural areas, even if they are located in somewhat rural districts.

### HIV sentinel surveillance\*

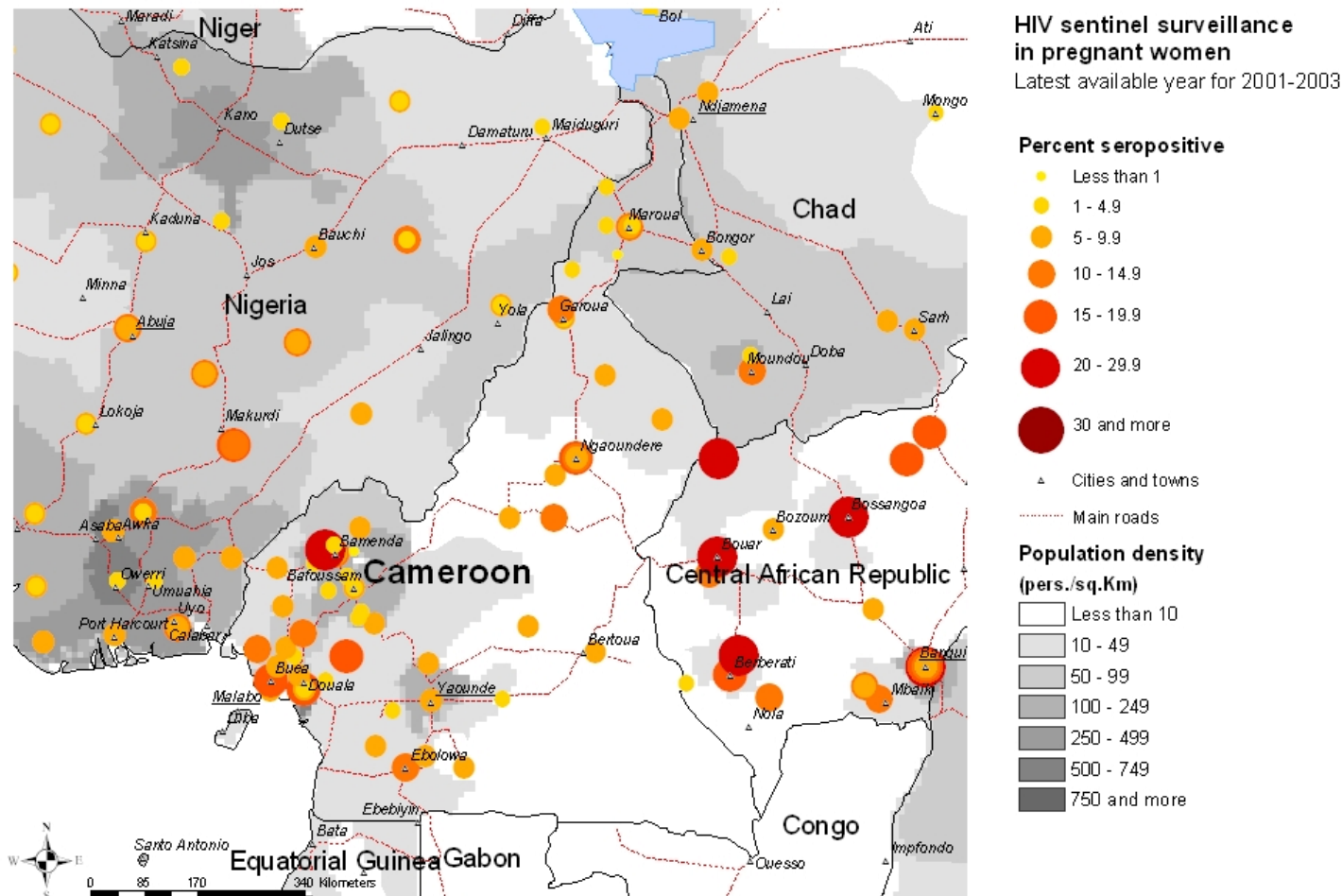
Group	Area		1987	1988	1989	1990	1991	1992	1993	1994	1995	1996	1997	1998	1999	2000	2001	2002	2003	
Pregnant women	Major urban areas	N-Sites		1.00	4.00	3.00	2.00	4.00	2.00	2.00	1.00	3.00				2.00	2.00	6.00		
		Minimum		1.50	0.20	1.10	1.60	1.00	1.30	3.00	2.67	2.00					10.33	5.55	3.00	
		Median		1.50	0.80	1.30	1.85	1.80	3.00	4.35	2.67	4.52					11.96	6.58	6.98	
		Maximum		1.50	1.11	1.30	2.10	4.00	4.70	5.70	2.67	4.78					13.59	7.60	16.00	
	Outside major urban areas	N-Sites			4.00	2.00	4.00	8.00	3.00	4.00	4.00	4.00	4.00	3.00	3.00	1.00	25.00		57.00	
		Minimum			0	0.70	2.00	1.09	3.00	2.91	3.36	3.26	5.75	3.50	3.25	3.42			0	
		Median			0.50	0.90	3.50	2.40	4.10	5.45	6.41	7.76	10.69	9.17	3.25	10.00		5.58		
		Maximum			1.00	1.10	8.20	7.90	7.80	10.60	7.84	11.17	18.49	14.86	3.25	18.00		21.51		
Sex workers	Major urban areas	N-Sites	1.00	2.00	1.00			2.00	2.00	1.00	2.00			1.00						
		Minimum	6.00	5.30	10.90			26.60	23.00	21.21	15.00			34.00						
		Median	6.00	5.45	10.90			35.95	29.00	21.21	16.35			34.00						
		Maximum	6.00	5.60	10.90			45.30	35.00	21.21	17.70			34.00						
	Outside major urban areas	N-Sites					2.00													
		Minimum					2.80													
		Median					6.30													
		Maximum					9.80													
Injecting drug users	Major urban areas	N-Sites			1.00	2.00	1.00	2.00		1.00		1.00				1.00				
		Minimum			1.50	2.36	2.60	4.70		5.41		16.00				21.96				
		Median			1.50	2.46	2.60	8.05		5.41		16.00				21.96				
		Maximum			1.50	2.56	2.60	11.40		5.41		16.00				21.96				
	Outside major urban areas	N-Sites			2.00	1.00		5.00		1.00				2.00						
		Minimum			1.20	1.32		4.27		9.00				13.46						
		Median			2.10	1.32		8.60		9.00				15.17						
		Maximum			3.00	1.32		9.00		9.00				16.88						
Men having sex with men	Major urban areas	N-Sites			2.00	2.00	1.00	2.00		1.00			1.00		1.00	1.00	1.00			
		Minimum			2.10	4.10	7.50	13.00		16.60			24.12		44.28	54.96	49.53			
		Median			2.51	4.39	7.50	15.40		16.60			24.12		44.28	54.96	49.53			
		Maximum			2.92	4.69	7.50	17.80		16.60			24.12		44.28	54.96	49.53			
	Outside major urban areas	N-Sites				1.00	1.00	1.00												
		Minimum				3.49	2.40	5.80												
		Median				3.49	2.40	5.80												
		Maximum				3.49	2.40	5.80												

\*Detailed data by site can be found in the Annex.

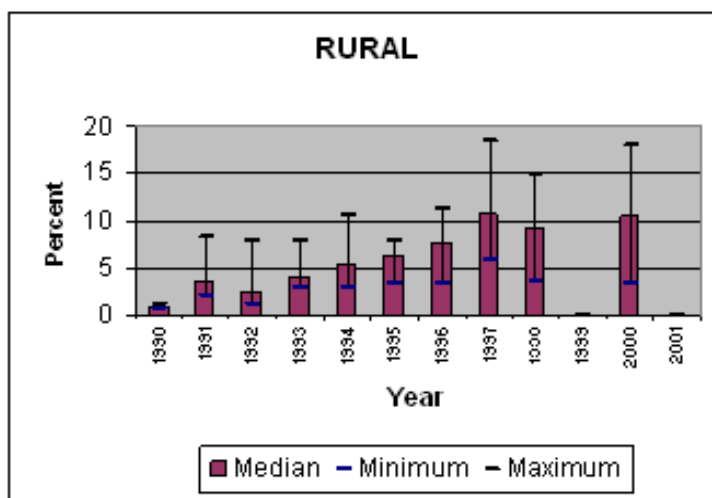
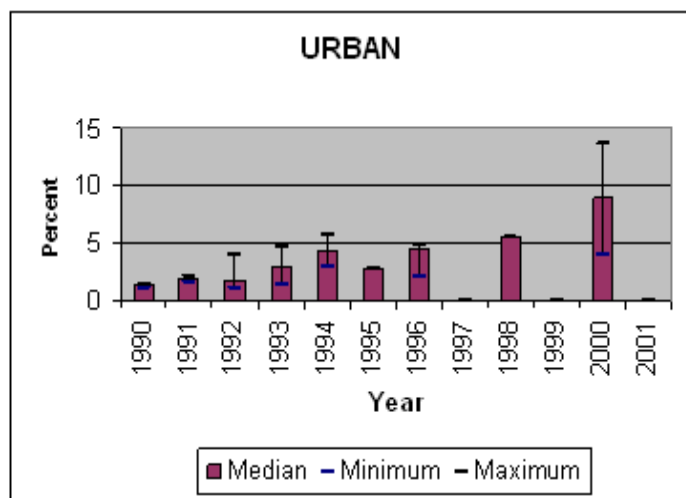
## Maps & charts

Mapping the geographical distribution of HIV prevalence among different population groups may assist in interpreting both the national coverage of the HIV surveillance system as well in explaining differences in levels of prevalence. The UNAIDS/WHO Working Group on Global HIV/AIDS and STI Surveillance, in collaboration with the WHO Public Health Mapping Team, Communicable Diseases, is producing maps showing the location and HIV prevalence in relation to population density, major urban areas and communication routes. For generalized epidemics, these maps show the location of prevalence of antenatal surveillance sites.

Trends in antenatal sentinel surveillance for higher prevalence countries, or in prevalence among selected populations for countries with concentrated epidemics, are a new addition. These are presented for those countries where sufficient data exist.



### Trends in HIV prevalence among antenatal clinic attendees



Median prevalence and ranges are shown in areas with more than one sentinel site.

The boundaries and names shown and the designations used on the map do not imply the expression of any opinion whatsoever on the part of the World Health Organization concerning the legal status of any country, territory, city or area or of its authorities, or concerning the delimitation of its frontiers or boundaries. Dotted lines on maps represent approximate border lines for which there may not yet be full agreement. WHO 2004, all rights reserved.

## Reported AIDS cases

Following WHO and UNAIDS recommendations, AIDS case reporting is carried out in most countries. Data from individual AIDS cases are aggregated at the national level and sent to WHO. However, case reports come from surveillance systems of varying quality. Reporting rates vary substantially from country to country and low reporting rates are common in developing countries due to weaknesses in the health care and epidemiological systems. In addition, countries use different AIDS case definitions. A main disadvantage of AIDS case reporting is that it only provides information on transmission patterns and levels of infection approximately 5-10 years in the past, limiting its usefulness for monitoring recent HIV infections.

Despite these caveats, AIDS case reporting remains an important advocacy tool and is useful in estimating the burden of HIV-related morbidity as well as for short-term planning of health care services. AIDS case reports also provide information on the demographic and geographic characteristics of the affected population and on the relative importance of the various exposure risks. In some situations, AIDS reports can be used to estimate earlier HIV infection patterns using back-calculation. AIDS case reports and AIDS deaths have been dramatically reduced in industrialized countries with the introduction of Anti-Retroviral Therapy (ART).

1979	1980	1981	1982	1983	1984	1985	1986	1987	1988	1989	1990	1991	1992	1993	1994	1995	1996	1997	1998
0	0	0	0	0	0	0	21	20	33	60	183	604	1308	1385	1761	2766	1485	3950	5410
1999	2000	2001	2002	2003	Total		UNK		Date of last report										
					18986				10/29/1999										

## Curable sexually transmitted infections (STIs)

The predominant mode of transmission of both HIV and other STIs is sexual intercourse. Measures for preventing sexual transmission of HIV and STIs are the same, as are the target audiences for interventions. In addition, strong evidence supports several biological mechanisms through which STIs facilitate HIV transmission by increasing both HIV infectiousness and HIV susceptibility. Thus, detection and treatment of individuals with STIs is an important part of an HIV control strategy. In summary, if the incidence/prevalence of STIs is high in a country, then there is the possibility of high rates of sexual transmission of HIV. Monitoring trends in STIs provides valuable insight into the likelihood of the importance of sexual transmission of HIV within a country, and is part of second generation surveillance. These trends also assist in assessing the impact of behavioural interventions, such as delaying sexual debut, reducing the number of sex partners and promoting condom use.

Clinical services offering STI care are an important access point for people at high risk for both STIs and HIV. Identifying people with STIs allows for not only the benefit of treating the STI, but for prevention education, HIV testing, identifying HIV-infected persons in need of care, and partner notification for STIs or HIV infection. Consequently, monitoring different components of STI prevention and control can also provide information on HIV prevention and control activities within a country.

### STI syndromes

Reported cases	1996	1997	1998	1999	2000	2001	2002	2003	Incidence 2003
----------------	------	------	------	------	------	------	------	------	----------------

Comments:

Source:

### Syphilis prevalence, women

Percent of blood samples taken from pregnant women aged 15-49 that test positive for syphilis - positive reaginic and treponemal test - during routine screening at selected antenatal clinics.

Year	Area	Rate	Range
2000-2001	Urban	2.8	1.3-6

Comments:

Source: Ministry of Public Health. National AIDS Control Committee. National Serosurvey on VIH/Syphilis. Technical Report. April 2001.

### Estimated prevalence of curable STIs among female sex workers

#### - Chlamydia

Year	Area	Rate	Range
1997-1999	Urban	5.6 (rate)	

Comments:

Source: Morison L. Commercial sex and the spread of HIV in four cities in sub-Saharan Africa. AIDS. 2001 Aug;15 Suppl 4:S61-9.

#### - Gonorrhoea

Year	Area	Rate	Range
1997-1999	Urban	5.6	

Comments:

Source: Morison L. Commercial sex and the spread of HIV in four cities in sub-Saharan Africa. AIDS. 2001 Aug;15 Suppl 4:S61-9.

Estimated prevalence of curable STIs among female sex workers (continued)**- Syphilis**

Year	Area	Rate	Range
1997-1999	Urban	7.18	

**Comments:**

**Source:** Morison L. Commercial sex and the spread of HIV in four cities in sub-Saharan Africa. AIDS. 2001 Aug;15 Suppl 4:S61-9.

**- Trichomoniasis**

Year	Area	Rate	Range
1997-1999	Urban	8.4	

**Comments:**

**Source:** Morison L. Commercial sex and the spread of HIV in four cities in sub-Saharan Africa. AIDS. 2001 Aug;15 Suppl 4:S61-9.

## Health service and care indicators

HIV prevention strategies depend on the twin efforts of care and support for those living with HIV or AIDS, and targeted prevention for all people at risk or vulnerable to the infection. It is difficult to capture such a large range of activities with one or just a few indicators. However, a set of well-established health care indicators may help to identify general strengths and weaknesses of health systems. Specific indicators, such as access to testing and blood screening for HIV, help to measure the capacity of health services to respond to HIV/AIDS - related issues.

### Access to health care

Indicators	Year	Estimate	Source
% of population with access to health services - total			
% of population with access to health services - urban			
% of population with access to health services - rural			
Contraceptive prevalence rate (%)	1998	19.3	UNICEF/UNPOP
Percentage of contraceptive users using condoms			
% of births attended by skilled health personnel	2000	56.1	WHO
% of 1-yr-old children fully immunized - DPT	2002	48	WHO/UNICEF
% of 1-yr-old children fully immunized - Measles	2001	62	WHO/UNICEF
% of ANC clinics where HIV testing is available			

### Number of adults (15-49) with advanced HIV infection receiving ARV therapy as of June 2004

#### Adults on treatment

Number: 8,660

Source: WHO

### Estimated number of adults (15-49) in need of treatment in 2003

#### Adults needing treatment

Number: 85,000

Source: WHO/UNAIDS

### Coverage of HIV testing and counselling

Number of public and NGO services providing testing and counselling services.

Year	Area	N=
2004	All	183

**Comments:** Figures were obtained by compiling data from various documents (annual activities report, PMTCT revue report, etc.) available at the central technical group of National AIDS Control Committee. Majority of VCT services are those offering PMTCT services

**Source:** Health Sector Support Unit, National AIDS Control Committee, Yaounde-Cameroun.

## Knowledge and behaviour

In most countries the HIV epidemic is driven by behaviours (e.g.: multiple sexual partners, injecting drug use) that expose individuals to the risk of infection. Information on knowledge and on the level and intensity of risk behaviour related to HIV/AIDS is essential in identifying populations most at risk for HIV infection and in better understanding the dynamics of the epidemic. It is also critical information in assessing changes over time as a result of prevention efforts. One of the main goals of the 2nd generation HIV surveillance systems is the promotion of a standard set of indicators defined in the National Guide (Source: National AIDS Programmes, A Guide to Monitoring and Evaluation, UNAIDS/00.17) and regular behavioural surveys in order to monitor trends in behaviours and to target interventions.

The indicators on knowledge and misconceptions are an important prerequisite for prevention programmes to focus on increasing people's knowledge about sexual transmission, and, to overcome the misconceptions that act as a disincentive to behaviour change. Indicators on sexual behaviour and the promotion of safer sexual behaviour are at the core of AIDS programmes, particularly with young people who are not yet sexually active or are embarking on their sexual lives, and who are more amenable to behavioural change than adults. Finally, higher risk male-male sex reports on unprotected anal intercourse, the highest risk behaviour for HIV among men who have sex with men.

### Knowledge of HIV prevention methods

Prevention indicator: Percentage of young people 15-24 who both correctly identify two ways of preventing the sexual transmission of HIV and who reject three misconceptions about HIV transmission.

Year	Male	Female
2000		16

**Comments:**

**Source:** MICS

### Reported condom use at last higher risk sex (young people 15-24)

Prevention indicator: Proportion of young people reporting the use of a condom during sex with a non-regular partner.

Year	Male	Female
1998	31	16

**Comments:**

**Source:** DHS

### Age-mixing in sexual partnerships among young women

The proportion of young women who have had sex in the last 12 months with a partner who is 10 or more years older than themselves.

Year	Area	Age group	Male	Female	All
------	------	-----------	------	--------	-----

**Comments:**

**Source:**

### Reported non-regular sexual partnerships

Prevention indicator: Proportion of young people 15-24 having at least one sex partner other than a regular partner in the last 12 months.

Year	Male	Female
1998	86	41

**Comments:**

**Source:** DHS

Knowledge and behaviour (continued)Ever used a condom

Percentage of people who ever used a condom.

Year	Area	Age group	Male	Female	All
------	------	-----------	------	--------	-----

Comments:

Source:

Adolescent pregnancy

Percentage of teenagers 15-19 who are mothers or pregnant with their first child.

Year	Percentage
------	------------

Comments:

Source:

Age at first sexual experience

Proportion of 15-19 year olds who have had sex before age 15.

Year	Male	Female
1998	18	26

Comments:

Source: DHS

## Prevention indicators

Male and female condoms are the only technology available that can prevent sexual transmission of HIV and other STIs. Persons exposing themselves to the risk of sexual transmission of HIV should have consistent access to high quality condoms. AIDS Programs implement activities to increase both availability of and access to condoms. These activities should be monitored and have resources directed to problem areas. The indicator below highlights the availability of condoms. However, even if condoms are widely available, this does not mean that individuals can or do access them.

### Condom availability nationwide

Total number of condoms available for distribution nationwide during the preceding 12 months, divided by the total population aged 15-49.

Year	N	Rate
------	---	------

Comments:

Source:

### Prevention of mother-to-child transmission (MTCT) nationwide

Percentage of women who were counselled during antenatal care for their most recent pregnancy, accepted an offer of testing and received their test results, of all women who were pregnant at any time in the preceding two years.

Year	N	Rate
------	---	------

Comments:

Source:

Blood safety programs aim to ensure that the majority of blood units are screened for HIV and other infectious agents. This indicator gives an idea of the overall percentage of blood units that have been screened to high enough standards that they can confidently be declared free of HIV.

### Screening of blood transfusions nationwide

Percentage of blood units transfused in the last 12 months that have been adequately screened for HIV according to national or WHO guidelines.

Year	N	Rate
------	---	------

Comments:

Source:

## Sources

Data presented in this Epidemiological Fact Sheet come from several sources, including global, regional and country reports, published documents and articles, posters and presentations at international conferences, and estimates produced by UNAIDS, WHO and other United Nations agencies. This section contains a list of the more relevant sources used for the preparation of the Fact Sheet. Where available, it also lists selected national Web sites where additional information on HIV/AIDS and STI are presented and regularly updated. However, UNAIDS and WHO do not warrant that the information in these sites is complete and correct and shall not be liable whatsoever for any damages incurred as a result of their use.

Ministry of public Health / WHO. Epidemiological country profile. Cameroon. 2001.

Final report for the AIDSCAP Programme in Cameroon, October 1992 to Septembre 1996.

Bablia, M. I. 1997 HIV/AIDS Surveillance Report: 1996 Epidemiology Section National AIDS Control Program Cameroon, Ministry of Public Health, May, document.

Cameroon Ministry of Health 1988 AIDS Control in Cameroon: Proposal for a Five Year Plan Ministry of Health, Government of the Republic of Cameroon, February 8, report.

Cameroon Ministry of Health 1992 HIV Surveillance Report 1992 Ministry of Health, AIDS Control Unit, November, report.

Cameroon Ministry of Health 1992 HIV Surveillance Report 1992 Ministry of Health, AIDS Control Unit, final report.

Cameroon Ministry of Health 1993 HIV/AIDS Surveillance Report 1993 Ministry of Health, AIDS Control Unit, preliminary report.

Cameroon Ministry of Public Health 2001 National Serosurvey of HIV/Syphilis National AIDS Control Committee, Ministry of Public Health, Epidemiology Unit, Republic of Cameroon, April, Technical report.

Cameroon Ministry of Public Health 2003 National HIV Sentinel Surveillance Report: 2002 National AIDS Control Committee, Ministry of Public Health, Epidemiological Surveillance and Research Section, June, draft report.

Garcia-Calleja, J. M., L. Zekeng, J. P. Louis, et al. 1992 HIV Infection in Cameroon: 30 Months' Surveillance in Yaounde AIDS, vol. 6, no. 8, pp. 881-882.

Garcia-Calleja, J. M., P. Ngoumou, A. Boupda, et al. 1992 HIV Seroprevalence Study among Commercial Sex Workers in Yaounde and Douala AIDS Control Unit, Ministry of Health, Yaounde, Sept. 92.

Glynn, J. R., A. Buve, M. Carael, et al. 2000 Decreased Fertility among HIV-1-Infected Women Attending Antenatal Clinics in Three African Cities Journal of Acquired Immune Deficiency Syndromes, vol. 25, no. 4, pp. 345-352.

Kaptue, L., L. Zekeng, R. Salla, et al. 1990 Setting Up a Sentinel Surveillance System for HIV Infection in Cameroon VI International Conference on AIDS, San Francisco, 6/20-24, Poster F.C.597.

Kuaban, C., R. Bercion, S. Koulla-Shiro 1997 HIV Seroprevalence Rate and Incidence of Adverse Skin Reactions in Adults with Pulmonary Tuberculosis Receiving Thiacetazone . . East African Medical Journal, vol. 74, no. 8, pp. 474-477.

Kenfack, H., C. Ndongmo, L. Zekeng, et al. 1997 T-Lymphocyte Subsets and HIV Infection in a STD Clinic Attendants in Yaounde Xth International Conference on AIDS and STD in Africa Abidjan, Cote d'Ivoire, 12/7-11, Abstract A.275.

Kengne, M., S. Kuate, S. Mangwa, et al. 1999 Prevalence of Sexually Transmitted Diseases in Patients Attending an STD Clinic, Douala, Cameroon: An Overview on 2 Years Survey XI International Conference on AIDS and STDs in Africa, Lusaka, Zambia, 9/12-16, Abstract 13PT31-34.

Kenmogne, P., N. Ngansop, N. Ndemi, et al. 2001 HIV/AIDS among Tuberculosis Patient Attending a Chest Clinic in Yaounde-Cameroon/An Overview on 03 Years Survey XIIth International Conference on AIDS and STD in Africa, Ouagadougou, Burkina Faso, 12/9-13, Poster 13PT3-299.

Lobe, V. E., R. Moyo, D. Mfonfu, et al. 1992 Prevalence of HIV Infection in Kumba, Cameroon VII International Conference on AIDS in Africa, Yaounde, Cameroon, 12/8-11, Poster T.P.009.

Meeberg, V. D., R. C. Kooiman, N. J. F. Busiman, et al. 1989 Prevalence of HIV among Pregnant Women Attending a Hospital in Mounjo District, Cameroon Tropical and Geographical Medicine, vol. 41, no. 1, pp. 45-49.

Monny-Lobe, M., D. Nichols, L. Zekeng, et al. 1989 The Use of Condoms by Prostitutes in Yaounde-Cameroon V International Conference on AIDS, Montreal, 6/4-9, Poster W.D.P. 87.

Macauley, I. B. 1997 HIV and AIDS Surveillance in Cameroon: 1995 National AIDS Control Programme.

Mbopi Keou, F. X., R. Mbu, P. Mauclere, et al. 1998 Antenatal HIV Prevalence in Yaounde, Cameroon International Journal of STD and AIDS, vol. 9, no. 7, pp. 400-402.

Macauley, I. B. 1999 Synthese de la Situation Epidmiologique Nationale du VIH/SIDA Ministere de la Sante Publique Comite National de Lutte Contre le SIDA, Republique du Camerounn, octobre, report.

Ndumbe, P. M., A. Andela, A. Ndoumou, et al. 1991 HIV Infection in Selected Populations in Cameroon AIDS, vol. 5, no. 4, pp. 465-466.

Ndumbe, P. M., F. Okie, P. Nyambi, et al. 1992 Retrovirus Infections in the South of Cameroon Annales de la Societe de Belge de Medicine Tropicale, vol. 72, no. 2, pp. 141-144.

Ndumbe, P. M., A. M. Luma, J. Skalsky, et al. 1993 Update on HIV Epidemic in Cameroon AIDS, vol. 7, no. 10, pp. 1397-1399.

Najomou, J., E. Nyankiye, L. Zekeng, et al. 1998 Seroepidemiology of HIV1/2 Infections among Patients Attending the Tuberculosis Unit, Douala Central Hospital 12th World AIDS Conference, Geneva, 6/28 - 7/3, Abstract 13120.

Ndongmo, C. B., L. Zekeng, L. Kaptue 2000 Increased HIV Prevalence among Individuals Attending a Sexually Transmitted Infection (STI) Clinic in Yaounde, Cameroon XIII International AIDS Conference, Durban, South Africa, 7/9-14, Abstract WePeC4398.

Nlend, A. N., A. Ayouba, P. Cunin, et al. 2001 Pilot Program to Implement Short Course of ARV to Reduce Perinatal Transmission of HIV in Yaounde-Cameroon XIII International Conference on AIDS and STD in Africa, Ouagadougou, Burkina Faso, 12/9-13, Poster 13PT2-184.

Pinay, P., G. De The 1989 "Stagnation" Apparente de l'Infection HIV-1 a Douala, Cameroon, Apparition du HIV-2 IV Internat. Conf.: AIDS and Assoc. Cancers in Africa, Marseille, Oct. 18-20, Poster 050.

Remy, G. 1993 Image Geographique de l'Infection a VIH 1 en Afrique Centrale: Des Discontinuites Remarquables Annales de la Societe Belge de Medecine Tropicale, vol. 73, no. 2, pp. 127-142.

Skalsky, J. 1992 HIV and AIDS in a Rural Area of the South West Province of Cameroon VII International Conference on AIDS in Africa, Yaounde, Cameroon, 12/8-11, Poster T.P.007.

Sam-Abbenyi, A., J. M. Garcia Calleja, L. Zekeng, et al. 1993 HIV Sentinel Surveillance among Pregnant Women in Six Provinces in Cameroon, 1989-1992 VIII International Conference on AIDS in Africa, Marrakech, Morocco, 12/12-16, Abstract Th.P.C.069.

Sam-Abbenyi, A. 1994 Report on HIV-1 Sentinel Surveillance System in Cameroon 1994 Ministry of Public Health, Republic of Cameroon, AIDS Control Unit, Epidemiology Section, report.

Skalsky, J., P. M. Ndumbe, the Manyemen HIV/AIDS Team 1993 Characteristics of HIV/AIDS Patients Attending a Rural Hospital in Cameroon Annales de la Societe Belge de Medecine Tropicale, vol. 73, no. 3, pp. 209-216.

Tongo, M., H. Kanfack, A. Nanfack, et al. 1999 Prevalence and Associated Risk Factors of HTLV-1 Infection in General Population and Sex Workers in Yaounde, Cameroon XI International Conference on AIDS and STDs in Africa, Lusaka, Zambia, 9/12-16, Abstract 13PT31-16.

Watsop, D. C. 2001 HIV and Syphilis Seroprevalence among Pregnant Women in Mbouda (West Province, Cameroon) XIII International Conference on AIDS and STDs in Africa, Ouagadougou, Burkina Faso, 12/9-13, Abstract 10PT3-200.

Zekeng, L., P. Barth, R. Salla, et al. 1990 A Seroepidemiological Study of Sexually Transmitted Agents (HIV, Hepatitis B Virus, T. Pallidum) among Sentinal Population. ... VI International Conference on AIDS, San Francisco, 6/20-24, Poster F.C.598.

Zekeng, L., D. Yanga, A. Trebucq, et al. 1992 HIV Prevalence in Patients with Sexually Transmitted Diseases in Yaounde, (Cameroon) in 1989 and 1990: Necessity of an STD ... Genitourinary Medicine, vol. 68, pp. 117-119.

Zekeng, L., Andela, J. M. Garcia, et al. 1991 Trends of HIV Infection among Pregnant women in Yaounde, Cameroon from 1989 to 1991 VI International Conference on AIDS in Africa, Dakar, Senegal, 12/16-19, Poster T.A.109.

Zekeng, L., A. Ndoumou, J. M. Garcia, et al. 1992 HIV Infection among TB Patient in Yaounde: 3 Years of Surveillance VIII International Conference on AIDS, Amsterdam, 7/19-24, Abstract PuC 8115.

Zekeng, L., L. Gurtler, E. Afane Ze, et al. 1994 Prevalence of HIV-1 Subtype O Infection in Cameroon: Preliminary Results AIDS, vol. 8, no. 11, pp. 1626-1628.

**Websites:** [www.aids.africa.com](http://www.aids.africa.com)  
[www.fhi.org/en/aids/aidschap/aidspubs/special/countryprog/Cameroon/camexec.html](http://www.fhi.org/en/aids/aidschap/aidspubs/special/countryprog/Cameroon/camexec.html)

## Annex: HIV surveillance by site

Group	Area	1987	1988	1989	1990	1991	1992	1993	1994	1995	1996	1997	1998	1999	2000	2001	2002	2003	
Pregnant women	Major urban areas	Bonaberi, Douala																16.00	
		CASS, Yaounde						1.70											
		Central Antenatal Clinic, Yaounde			0.20														
		Congo II, Douala																	3.00
		Deido, Douala																	6.50
		Djoungolo, Yaounde																	5.00
		Douala				1.10				5.70		4.52							
		EFOULAN, Yaounde							1.00										
		Foundation Chantal Biya, Yaounde															10.33		7.46
		Mfou, Yaounde															13.59		9.21
		PMI, Douala							4.00	4.70									
		PMI, Yaounde			0.70	1.30	1.60	1.90	1.30										
		Yaounde(1), Yaounde		1.50	0.90	1.30	2.10				3.00	2.67	3.39						6.58
		Yaounde(2), Yaounde			1.11														
		Outside major urban areas	Abong Mbang														12.00		
	Amban, Amban (rural)																		8.33
	Ayos, Ayos (rural)																		1.01
	Bafat, Bafat (rural)																		4.00
	Bafia, Bafia (rural)																		6.06
	Bafoussam							1.22											8.05
	Bali															7.00			
	Bali, Bamenda																		8.00
	Bamenda			0.50	0.70	2.30	3.80	7.80	7.70	6.77	8.83	18.49	14.86				14.00		
	Bandjoun, Bandjoun (rural)																		4.55
	Bangante, Bangante (rural)																		3.41
	Banso, Banso (rural)																		8.08
	Batibo, Batibo (rural)																		2.00
	Batouri																9.59		
	Bazou, Bazou (rural)																		3.70
	Bertoua							7.90		10.60	6.04	6.69					9.04		
	Buea (Muea)																17.00		15.22
	CPF, Garoua																	9.00	
Deido, Lounpeuj (rural)																	2.00		
Deido-Newbell															3.95				
Djarengol																	1.00		
Dourbeye																	4.48		
Dschang															4.27		3.49		
Ebolowa															8.89		13.00		
Edea															9.00				
Ekondo Titi, Ekondo Titi (rural)																	12.37		
Foumban															10.34		7.32		
Garoua					2.00	2.30	3.00	3.20	3.36	3.26	5.75	3.50			9.00				
Gashiga/Gashiga, Gashiga															18.00		12.64		
H Prot, Ngaoundere																	11.00		
HP, Ebolowa																	10.20		
HP, Maroua																	12.00		
HP, Ngaoundere																	18.56		
Kolere, Garoua																	9.41		
Kolofata, Kolofata (rural)																	3.00		
Kumba			0.50		8.20	1.09									10.00		9.80		
Lainde, Garoua																	4.00		
Limbe			1.00	1.10	4.70	2.50	4.10	2.91	7.84	11.17	10.69	9.17			11.06		5.58		
Lolodorf															14.81				
Lolodorf, Lolodorf (rural)																	5.08		
Mamfe, Mamfe (rural)																	5.05		
Manyemen, Manyemen (rural)							2.90										9.38		
Maroua																	17.75		

Group	Area	1987	1988	1989	1990	1991	1992	1993	1994	1995	1996	1997	1998	1999	2000	2001	2002	2003			
Pregnant women	Outside major urban areas	Mayo Oulo																7.06			
		Mbanga														5.00			3.00		
		Mbengwi, Mbengwi (rural)																		21.51	
		Mbouda, Mbouda (semi-urban)													3.25						
		Metet, Metet (rural)																		9.57	
		Mifi Tyo, Bafoussam																			4.04
		Mifi, Bafoussam																5.46			
		Mokolo																12.12			
		Mokong, Mokong (rural)																			2.00
		Moutourwa, Moutourwa (rural)																			0
		Ndop																			11.00
		Ndounge Hospital, Moungo district																			
		Ngaoumbela, Ngaoumbela (rural)																			5.00
		Ngaoundal																			13.13
		Ngaoundere				0			1.33												16.97
		Ngaoundere Sabongari																			5.10
		Ngong																			3.42
		Ngong, Ngong (rural)																			4.00
		Ngoulmakong, Ngoulmakong (rural)																			5.56
		Nkolvone, Nkolvone (rural)																			11.00
		Nkwen, Bamenda																			11.29
		Nyasoso, Nyasoso (rural)																			12.90
		Pouma, Pouma (rural)																			16.00
		S'aa, S'aa (rural)																			7.07
		Sangmelima																			13.64
		Suzza, Suzza (rural)																			8.00
		Tibati																			5.00
Tokombere, Tokombere (rural)																			1.00		
Tonga, Tonga (rural)																			5.00		
Yagoua																			6.00		
Zokok, Maroua																			5.00		
Sex workers	Major urban areas	Douala	6.00	5.30	10.90			45.30	35.00		17.70										
		Yaounde(1), Yaounde		5.60				26.60	23.00	21.21	15.00		34.00								
	Outside major urban areas	Bamenda					9.80														
		Edea				2.80															
		Ngaoundere																			
		Nkongsamba																			
Injecting drug users																					
STI patients	Major urban areas	Douala						11.40													
		Elig Essono, Yaounde				2.46															
		Yaounde(1), Yaounde			1.50		2.60	4.70		5.41		16.00				21.96					
		Bafoussam							5.21												
		Bamenda			3.00				8.60												
	Outside major urban areas	Banka, Banka (semirural)								9.00											
		DAV Hospital, Douala												15.17							
		Garoua							9.00												
		HP, Ebolowa				1.32															
		Kumba			1.20				4.27												
Ngaoundere							8.77														
Men having sex with men	Major urban areas	Douala Central Hospital, Douala											24.12								
		Jamot Hospital, Douala						17.80													
		Jamot Hospital, Yaounde			2.92	4.69		13.00		16.60											
		Yaounde(1), Yaounde			2.10	4.10	7.50								44.28	54.96	49.53				
		Manyemen, Manyemen (rural)				3.49	2.40	5.80													