

2004  
Update



## Cambodia

**EPIDEMIOLOGICAL FACT SHEETS**  
ON HIV/AIDS AND SEXUALLY TRANSMITTED INFECTIONS



Joint United Nations Programme on HIV/AIDS

**UNAIDS**

UNHCR • UNICEF • WFP • UNDP • UNFPA  
UNODC • ILO • UNESCO • WHO • WORLD BANK



World Health  
Organization

## HIV/AIDS estimates

In 2003 and during the first quarter of 2004, UNAIDS and WHO worked closely with national governments and research institutions to recalculate current estimates on people living with HIV/AIDS. These calculations are based on the previously published estimates for 1999 and 2001 and recent trends in HIV/AIDS surveillance in various populations. A methodology developed in collaboration with an international group of experts was used to calculate the new estimates on prevalence and incidence of HIV and AIDS deaths, as well as the number of children infected through mother-to-child transmission of HIV. Different approaches were used to estimate HIV prevalence in countries with low-level, concentrated or generalised epidemics. The current estimates do not claim to be an exact count of infections. Rather, they use a methodology that has thus far proved accurate in producing estimates that give a good indication of the magnitude of the epidemic in individual countries. However, these estimates are constantly being revised as countries improve their surveillance systems and collect more information.

Adults in this report are defined as women and men aged 15 to 49. This age range covers people in their most sexually active years. While the risk of HIV infection obviously continues beyond the age of 50, the vast majority of those who engage in substantial risk behaviours are likely to be infected by this age. The 15 to 49 range was used as the denominator in calculating adult HIV prevalence.

### Estimated number of adults and children living with HIV/AIDS, end of 2003

These estimates include all people with HIV infection, whether or not they have developed symptoms of AIDS, alive at the end of 2003:

Adults and children	170,000		
Low estimate	100,000		
High estimate	290,000		
Adults (15-49)	170,000	Adult rate (%)	2.6
Low estimate	99,000	Low estimate	1.5
High estimate	280,000	High estimate	4.4
Children (0-15)	7,300		
Low estimate	3,800		
High estimate	14,000		
Women (15-49)	51,000		
Low estimate	31,000		
High estimate	86,000		

### Estimated number of deaths due to AIDS

Estimated number of adults and children who died of AIDS during 2003:

Deaths in 2003	15,000
Low estimate	9,100
High estimate	25,000

### Estimated number of orphans

Estimated number of children who have lost their mother or father or both parents to AIDS and who were alive and under age 17 at the end of 2003:

Current living orphans
Low estimate
High estimate

## Assessment of the epidemiological situation 2004

Rapid increases in HIV transmission have been reported in Cambodia since the first case of HIV infection was notified in 1991. By 2003, an estimated 170,000 adults were living with HIV infection and AIDS. Prevalence among those aged 15 to 49 years is estimated to be 2.7%. HIV is transmitted primarily through sexual contact. The prevalence among ANC attendees have been declining in the last few years in the capital from 4.9% in 1999 to 3.5% in 2002. However the highest HIV prevalence is observed among female sex workers (18.5% among direct sex workers and 13.8% among indirect sex workers in 2002) in the capital. Among TB patients in Phnom Penh 16% were HIV positive in 2002.

STI are highly prevalent. Condom use is increasing (consistent use with commercial sex partners increased from 62% in 1997 to 78% in 1999 among Direct sex workers; from 65.4% in 1997 to 81% in 1999 among police personnel). In 1999, Gonococcal antimicrobial resistance is high for both penicillin (79%) and quinolones (53%).

## UNAIDS/WHO Working Group on Global HIV/AIDS and STI Surveillance

Global Surveillance of HIV/AIDS and sexually transmitted infections (STIs) is a joint effort of WHO and UNAIDS. The UNAIDS/WHO Working Group on Global HIV/AIDS and STI Surveillance, initiated in November 1996, guides respective activities. The primary objective of the Working Group is to strengthen national, regional and global structures and networks for improved monitoring and surveillance of HIV/AIDS and STIs. For this purpose, the Working Group collaborates closely with national AIDS programmes and a number of national and international experts and institutions. The goal of this collaboration is to compile the best information available and to improve the quality of data needed for informed decision-making and planning at national, regional, and global levels. The Epidemiological Fact Sheets are one of the products of this close and fruitful collaboration across the globe.

Within this framework, the Fact Sheets collate the most recent country-specific data on HIV/AIDS prevalence and incidence, together with information on behaviours (e.g. casual sex and condom use) which can spur or stem the transmission of HIV.

Not unexpectedly, information on all of the agreed upon indicators was not available for many countries in 2003. However, these updated Fact Sheets do contain a wealth of information which allows identification of strengths in currently existing programmes and comparisons between countries and regions. The Fact Sheets may also be instrumental in identifying potential partners when planning and implementing improved surveillance systems.

The fact sheets can be only as good as information made available to the UNAIDS/WHO Working Group on Global HIV/AIDS and STI Surveillance. Therefore, the Working Group would like to encourage all programme managers as well as national and international experts to communicate additional information to them whenever such information becomes available. The Working Group also welcomes any suggestions for additional indicators or information proven to be useful in national or international decision-making and planning.

## Basic indicators

For consistency reasons the data used in the table below are taken from official UN publications.

DEMOGRAPHIC DATA	YEAR	ESTIMATE	SOURCE
Total population (thousands)	2004	14,482	UN population division database
Female population aged 15-24 (thousands)	2004	1,666	UN population division database
Population aged 15-49 (thousands)	2004	7,040	UN population division database
Annual population growth rate (%)	1992-2002	2.8	UN population division database
% of population in urban areas	2003	18.3	UN population division database
Average annual growth rate of urban population	2000-2005	5.5	UN population division database
Crude birth rate (births per 1,000 pop.)	2004	33.5	UN population division database
Crude death rate (deaths per 1,000 pop.)	2004	10	UN population division database
Maternal mortality rate (per 100,000 live births)	2000	450	WHO (WHR2004)/UNICEF
Life expectancy at birth (years)	2002	54.6	World Health Report 2004, WHO
Total fertility rate	2002	4.8	World Health Report 2004, WHO
Infant mortality rate (per 1,000 live births)	2000	106	World Health Report 2004, WHO
Under 5 mortality rate (per 1,000 live births)	2000	134	World Health Report 2004, WHO

SOCIO-ECONOMIC DATA	YEAR	ESTIMATE	SOURCE
Gross national income, ppp, per capita (Int.\$)	2002	1,590	World Bank
Gross domestic product, per capita % growth	2001-2002	2.6	World Bank
Per capita total expenditure on health (Int.\$)	2001	184	World Health Report 2004, WHO
General government expenditure on health as % of total expenditure on health	2001	14.9	World Health Report 2004, WHO
Total adult illiteracy rate	2000	32	UNESCO
Adult male illiteracy rate		19.8	UNESCO
Adult female illiteracy rate	2000	42.8	UNESCO
Gross primary school enrolment ratio, male	2000/2001	117	UNESCO
Gross primary school enrolment ratio, female	2000/2001	103	UNESCO
Gross secondary school enrolment ratio, male	2000/2001	24	UNESCO
Gross secondary school enrolment ratio, female	2000/2001	13	UNESCO

### Contact address

UNAIDS/WHO Working Group on Global  
HIV/AIDS and STI Surveillance  
20, Avenue Appia  
CH - 1211 Geneva 27  
Switzerland  
Fax: +41-22-791-4834

email: [hivstrategicinfo@who.int](mailto:hivstrategicinfo@who.int) or  
[estimates@unaids.org](mailto:estimates@unaids.org)

website: <http://www.who.int/hiv>  
<http://www.unaids.org>

Extracts of the information contained in these fact sheets may be reviewed, reproduced or translated for research or private study but not for sale or for use in conjunction with commercial purposes. Any use of information in these fact sheets should be accompanied by the following acknowledgment "UNAIDS/WHO epidemiological fact sheets on HIV/AIDS and Sexually Transmitted Infections, 2004 Update".

## HIV prevalence in different populations

This section contains information about HIV prevalence in different populations. The data reported in the tables below are mainly based on the HIV database maintained by the United States Bureau of the Census where data from different sources, including national reports, scientific publications and international conferences are compiled. To provide a simple overview of the current situation and trends over time, summary data are given by population group, geographical area (Major Urban Areas versus Outside Major Urban Areas), and year of survey. Studies conducted in the same year are aggregated and the median prevalence rates (in percentages) are given for each of the categories. The maximum and minimum prevalence rates observed, as well as the total number of surveys/sentinel sites, are provided with the median, to give an overview of the diversity of HIV-prevalence results in a given population within the country. Data by sentinel site or specific study from which the medians were calculated are printed at the end of this fact sheet.

The differentiation between the two geographical areas Major Urban Areas and Outside Major Urban Areas is not based on strict criteria, such as the number of inhabitants. For most countries, Major Urban Areas were considered to be the capital city and - where applicable - other metropolitan areas with similar socio-economic patterns. The term Outside Major Urban Areas considers that most sentinel sites are not located in strictly rural areas, even if they are located in somewhat rural districts.

### HIV sentinel surveillance\*

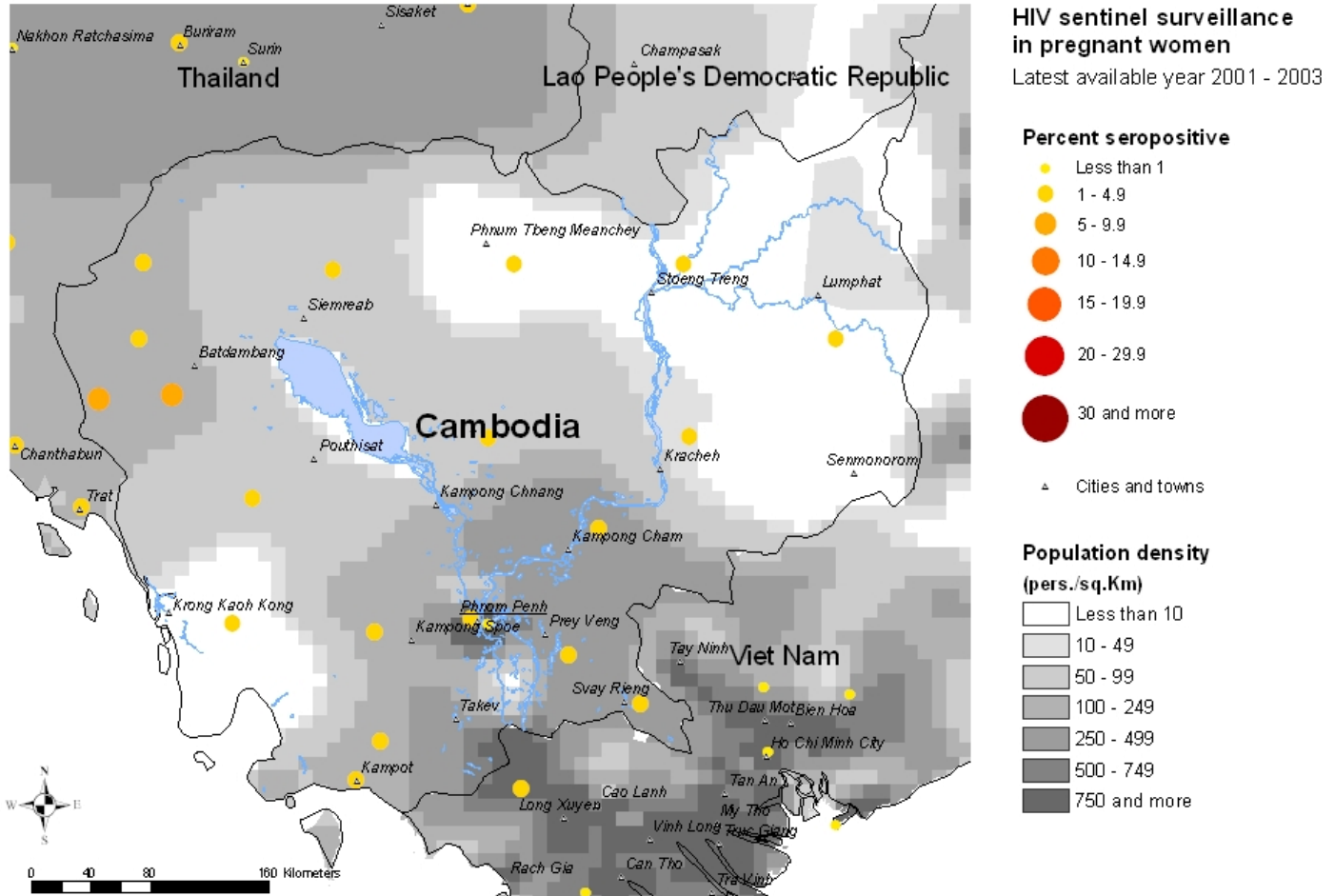
Group	Area		1987	1988	1989	1990	1991	1992	1993	1994	1995	1996	1997	1998	1999	2000	2001	2002	2003	
Pregnant women	Major urban areas	N-Sites						1.00			1.00	1.00	1.00		1.00	1.00	1.00	1.00		
		Minimum						0			3.03	3.23	0.81		4.89	2.67	3.56	3.45		
		Median						0			3.03	3.23	0.81		4.89	2.67	3.56	3.45		
		Maximum						0			3.03	3.23	0.81		4.89	2.67	3.56	3.45		
	Outside major urban areas	N-Sites										5.00	17.00	21.00		19.00	20.00		19.00	
		Minimum										1.53	0.29	0.47		0	0.55		0.81	
		Median										2.22	1.61	2.88		2.11	1.71		2.52	
		Maximum										4.44	6.19	19.51		8.00	5.67		5.87	
Sex workers	Major urban areas	N-Sites						1.00			1.00	1.00	1.00		1.00	1.00		1.00		
		Minimum						9.18			30.47	41.62	44.44	61.33	47.40	26.32		18.52		
		Median						9.18			30.47	41.62	44.44	61.33	47.40	26.32		18.52		
		Maximum						9.18			30.47	41.62	44.44	61.33	47.40	26.32		18.52		
	Outside major urban areas	N-Sites					1.00	1.00			1.00	7.00	16.00	9.00	17.00	17.00	18.00	1.00	18.00	
		Minimum					0	15.00			38.83	13.64	13.33	19.13	21.36	7.33	7.14	46.50	10.06	
		Median					0	15.00			38.83	39.16	40.18	24.14	39.33	31.73	31.02	46.50	30.14	
		Maximum					0	15.00			38.83	48.00	58.33	58.08	64.12	52.00	58.57	46.50	63.38	
Injecting drug users	Major urban areas	N-Sites						1.00	1.00	1.00										
		Minimum						4.47	13.50	8.50										
		Median						4.47	13.50	8.50										
		Maximum						4.47	13.50	8.50										
	Outside major urban areas	N-Sites							1.00											
		Minimum							4.17											
		Median							4.17											
		Maximum							4.17											
Men having sex with men	Major urban areas	N-Sites									1.00	1.00	1.00		1.00	1.00		1.00		
		Minimum									11.25	11.46	15.38		14.00	16.67		16.00		
		Median									11.25	11.46	15.38		14.00	16.67		16.00		
		Maximum									11.25	11.46	15.38		14.00	16.67		16.00		
	Outside major urban areas	N-Sites										3.00	13.00	11.00		14.00	15.00		14.00	
		Minimum										0	0	0		2.22	0.66		1.43	
		Median										0.50	2.86	2.63		8.80	4.92		5.49	
		Maximum										3.45	28.00	16.00		14.10	19.46		24.44	

\*Detailed data by site can be found in the Annex.

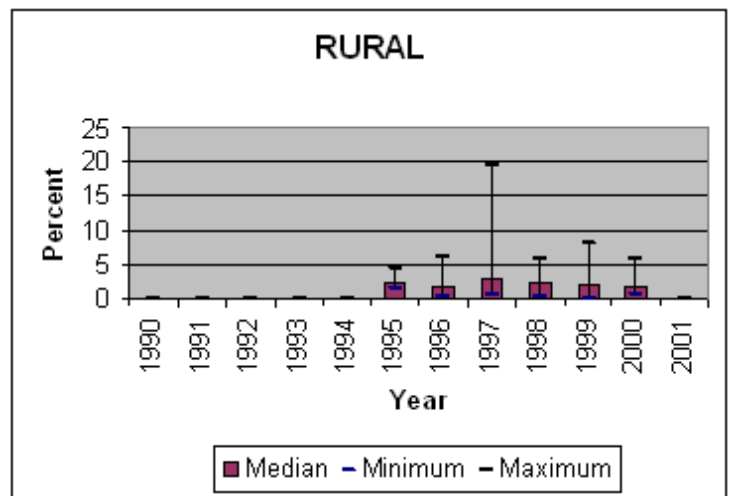
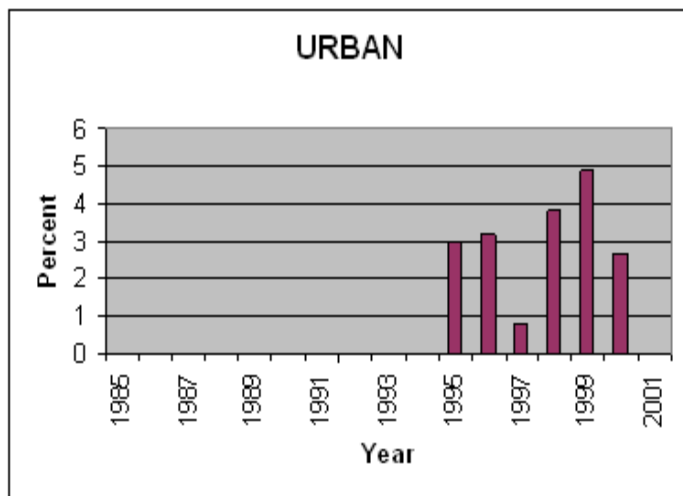
## Maps & charts

Mapping the geographical distribution of HIV prevalence among different population groups may assist in interpreting both the national coverage of the HIV surveillance system as well in explaining differences in levels of prevalence. The UNAIDS/WHO Working Group on Global HIV/AIDS and STI Surveillance, in collaboration with the WHO Public Health Mapping Team, Communicable Diseases, is producing maps showing the location and HIV prevalence in relation to population density, major urban areas and communication routes. For generalized epidemics, these maps show the location of prevalence of antenatal surveillance sites.

Trends in antenatal sentinel surveillance for higher prevalence countries, or in prevalence among selected populations for countries with concentrated epidemics, are a new addition. These are presented for those countries where sufficient data exist.



### Trends in HIV prevalence among antenatal clinic attendees



Median prevalence and ranges are shown in areas with more than one sentinel site.

The boundaries and names shown and the designations used on the map do not imply the expression of any opinion whatsoever on the part of the World Health Organization concerning the legal status of any country, territory, city or area or of its authorities, or concerning the delimitation of its frontiers or boundaries. Dotted lines on maps represent approximate border lines for which there may not yet be full agreement. WHO 2004, all rights reserved.

## Reported AIDS cases

Following WHO and UNAIDS recommendations, AIDS case reporting is carried out in most countries. Data from individual AIDS cases are aggregated at the national level and sent to WHO. However, case reports come from surveillance systems of varying quality. Reporting rates vary substantially from country to country and low reporting rates are common in developing countries due to weaknesses in the health care and epidemiological systems. In addition, countries use different AIDS case definitions. A main disadvantage of AIDS case reporting is that it only provides information on transmission patterns and levels of infection approximately 5-10 years in the past, limiting its usefulness for monitoring recent HIV infections.

Despite these caveats, AIDS case reporting remains an important advocacy tool and is useful in estimating the burden of HIV-related morbidity as well as for short-term planning of health care services. AIDS case reports also provide information on the demographic and geographic characteristics of the affected population and on the relative importance of the various exposure risks. In some situations, AIDS reports can be used to estimate earlier HIV infection patterns using back-calculation. AIDS case reports and AIDS deaths have been dramatically reduced in industrialized countries with the introduction of Anti-Retroviral Therapy (ART).

1979	1980	1981	1982	1983	1984	1985	1986	1987	1988	1989	1990	1991	1992	1993	1994	1995	1996	1997	1998
									906					1	14	91	300	572	1494
1999	2000	2001	2002	2003	Total	UNK	Date of last report												
2256	3684	16053	1394		26765		7/11/2004												

## Curable sexually transmitted infections (STIs)

The predominant mode of transmission of both HIV and other STIs is sexual intercourse. Measures for preventing sexual transmission of HIV and STIs are the same, as are the target audiences for interventions. In addition, strong evidence supports several biological mechanisms through which STIs facilitate HIV transmission by increasing both HIV infectiousness and HIV susceptibility. Thus, detection and treatment of individuals with STIs is an important part of an HIV control strategy. In summary, if the incidence/prevalence of STIs is high in a country, then there is the possibility of high rates of sexual transmission of HIV. Monitoring trends in STIs provides valuable insight into the likelihood of the importance of sexual transmission of HIV within a country, and is part of second generation surveillance. These trends also assist in assessing the impact of behavioural interventions, such as delaying sexual debut, reducing the number of sex partners and promoting condom use.

Clinical services offering STI care are an important access point for people at high risk for both STIs and HIV. Identifying people with STIs allows for not only the benefit of treating the STI, but for prevention education, HIV testing, identifying HIV-infected persons in need of care, and partner notification for STIs or HIV infection. Consequently, monitoring different components of STI prevention and control can also provide information on HIV prevention and control activities within a country.

### STI syndromes

Reported cases	1996	1997	1998	1999	2000	2001	2002	2003	Incidence 2003
Urethral discharge								1738	
Genital Ulcer								595	

**Comments:** Data provided for 11 special STI clinics.

**Source:** STD Unit, National Center for HIV/AIDS, Dermatology and STD (NCHADS)

### Syphilis prevalence, women

Percent of blood samples taken from pregnant women aged 15-49 that test positive for syphilis - positive reaginic and treponemal test - during routine screening at selected antenatal clinics.

Year	Area	Rate	Range

**Comments:**

**Source:**

### Estimated prevalence of curable STIs among female sex workers

#### - Chlamydia

Year	Area	Rate	Range
2000-2001	Not specified	12.1 (rate)	

**Comments:**

**Source:** Ministry of Health Cambodia, Family Health International. Low prevalence of sexually transmitted infections in Cambodia supports recent behavioral and HIV seroprevalence trends. 2002.

#### - Gonorrhoea

Year	Area	Rate	Range
2000-2001	Not specified	14.2	

**Comments:**

**Source:** Ministry of Health Cambodia, Family Health International. Low prevalence of sexually transmitted infections in Cambodia supports recent behavioral and HIV seroprevalence trends. 2002.

Estimated prevalence of curable STIs among female sex workers (continued)**- Syphilis**

Year	Area	Rate	Range
2000-2001	Not specified	5.7	

**Comments:**

**Source:** Ministry of Health Cambodia, Family Health International. Low prevalence of sexually transmitted infections in Cambodia supports recent behavioral and HIV seroprevalence trends. 2002.

**- Trichomoniasis**

Year	Area	Rate	Range
2000-2001	Unknown	2.1	

**Comments:**

**Source:** Ministry of Health Cambodia, Family Health International. Low prevalence of sexually transmitted infections in Cambodia supports recent behavioral and HIV seroprevalence trends. 2002.

## Health service and care indicators

HIV prevention strategies depend on the twin efforts of care and support for those living with HIV or AIDS, and targeted prevention for all people at risk or vulnerable to the infection. It is difficult to capture such a large range of activities with one or just a few indicators. However, a set of well-established health care indicators may help to identify general strengths and weaknesses of health systems. Specific indicators, such as access to testing and blood screening for HIV, help to measure the capacity of health services to respond to HIV/AIDS - related issues.

### Access to health care

Indicators	Year	Estimate	Source
% of population with access to health services - total	2001	86.1	MoH
% of population with access to health services - urban	2001	100	MoH
% of population with access to health services - rural	2001	72.2	MoH
Contraceptive prevalence rate (%)	1998	21.8	UNICEF/UNPOP
Percentage of contraceptive users using condoms			
% of births attended by skilled health personnel	2000	31.8	WHO
% of 1-yr-old children fully immunized - DPT	2002	54	WHO/UNICEF
% of 1-yr-old children fully immunized - Measles	2001	59	WHO/UNICEF
% of ANC clinics where HIV testing is available			

### Number of adults (15-49) with advanced HIV infection receiving ARV therapy as of June 2004

#### Adults on treatment

Number: 1,506

Source: WHO

### Estimated number of adults (15-49) in need of treatment in 2003

#### Adults needing treatment

Number: 28,000

Source: WHO/UNAIDS

### Coverage of HIV testing and counselling

Number of public and NGO services providing testing and counselling services.

Year	Area	N=
2004	All	58

#### Comments:

Source: NCHADS

## Knowledge and behaviour

In most countries the HIV epidemic is driven by behaviours (e.g.: multiple sexual partners, injecting drug use) that expose individuals to the risk of infection. Information on knowledge and on the level and intensity of risk behaviour related to HIV/AIDS is essential in identifying populations most at risk for HIV infection and in better understanding the dynamics of the epidemic. It is also critical information in assessing changes over time as a result of prevention efforts. One of the main goals of the 2nd generation HIV surveillance systems is the promotion of a standard set of indicators defined in the National Guide (Source: National AIDS Programmes, A Guide to Monitoring and Evaluation, UNAIDS/00.17) and regular behavioural surveys in order to monitor trends in behaviours and to target interventions.

The indicators on knowledge and misconceptions are an important prerequisite for prevention programmes to focus on increasing people's knowledge about sexual transmission, and, to overcome the misconceptions that act as a disincentive to behaviour change. Indicators on sexual behaviour and the promotion of safer sexual behaviour are at the core of AIDS programmes, particularly with young people who are not yet sexually active or are embarking on their sexual lives, and who are more amenable to behavioural change than adults. Finally, higher risk male-male sex reports on unprotected anal intercourse, the highest risk behaviour for HIV among men who have sex with men.

### Knowledge of HIV prevention methods

Prevention indicator: Percentage of young people 15-24 who both correctly identify two ways of preventing the sexual transmission of HIV and who reject three misconceptions about HIV transmission.

Year	Male	Female
2000		37

**Comments:**

**Source:** DHS 00

### Reported condom use at last higher risk sex (young people 15-24)

Prevention indicator: Proportion of young people reporting the use of a condom during sex with a non-regular partner.

Year	Male	Female
2002		94

**Comments:** Based on condom use during last sex with sex workers among household male surveyed.

**Source:** Cambodia Baseline Survey, Community Action for Preventing HIV/AIDS Project, NCHADS, September 2002

### Age-mixing in sexual partnerships among young women

The proportion of young women who have had sex in the last 12 months with a partner who is 10 or more years older than themselves.

Year	Area	Age group	Male	Female	All
------	------	-----------	------	--------	-----

**Comments:**

**Source:**

### Reported non-regular sexual partnerships

Prevention indicator: Proportion of young people 15-24 having at least one sex partner other than a regular partner in the last 12 months.

Year	Male	Female
2002	17	

**Comments:** Based on number of partner more than 1 in the past 12 months among household male surveyed.

**Source:** Cambodia Baseline Survey, Community Action for Preventing HIV/AIDS Project, NCHADS, September 2002.

Knowledge and behaviour (continued)Ever used a condom

Percentage of people who ever used a condom.

Year	Area	Age group	Male	Female	All
------	------	-----------	------	--------	-----

Comments:

Source:

Adolescent pregnancy

Percentage of teenagers 15-19 who are mothers or pregnant with their first child.

Year	Percentage
------	------------

Comments:

Source:

Age at first sexual experience

Proportion of 15-19 year olds who have had sex before age 15.

Year	Male	Female
2002	0	

Comments:

Source: Cambodia Baseline Survey, Community Action for Preventing HIV/AIDS Project, NCHADS, September 2002

## Prevention indicators

Male and female condoms are the only technology available that can prevent sexual transmission of HIV and other STIs. Persons exposing themselves to the risk of sexual transmission of HIV should have consistent access to high quality condoms. AIDS Programs implement activities to increase both availability of and access to condoms. These activities should be monitored and have resources directed to problem areas. The indicator below highlights the availability of condoms. However, even if condoms are widely available, this does not mean that individuals can or do access them.

### Condom availability nationwide

Total number of condoms available for distribution nationwide during the preceding 12 months, divided by the total population aged 15-49.

Year	N	Rate
2001	16394900	2.6
2003	20,044,300	

**Comments:**

**Source:** PSI.

### Prevention of mother-to-child transmission (MTCT) nationwide

Percentage of women who were counselled during antenatal care for their most recent pregnancy, accepted an offer of testing and received their test results, of all women who were pregnant at any time in the preceding two years.

Year	N	Rate
------	---	------

**Comments:**

**Source:**

Blood safety programs aim to ensure that the majority of blood units are screened for HIV and other infectious agents. This indicator gives an idea of the overall percentage of blood units that have been screened to high enough standards that they can confidently be declared free of HIV.

### Screening of blood transfusions nationwide

Percentage of blood units transfused in the last 12 months that have been adequately screened for HIV according to national or WHO guidelines.

Year	N	Rate
2001	24600	100

**Comments:**

**Source:** National Blood Transfusion Center, MoH.

## Sources

Data presented in this Epidemiological Fact Sheet come from several sources, including global, regional and country reports, published documents and articles, posters and presentations at international conferences, and estimates produced by UNAIDS, WHO and other United Nations agencies. This section contains a list of the more relevant sources used for the preparation of the Fact Sheet. Where available, it also lists selected national Web sites where additional information on HIV/AIDS and STI are presented and regularly updated. However, UNAIDS and WHO do not warrant that the information in these sites is complete and correct and shall not be liable whatsoever for any damages incurred as a result of their use.

HSS 2000, National Center for HIV/AIDS, STIs and Dermatology NCHADS, Ministry of Health

Chin, J. 1996 HIV Prevalence Estimates for Cambodia: Recommendations for Future HIV Surveillance School of Public Health, University of California, Berkeley, Cambodia Trip Report, Sept. - Oct, unpublished.

Cambodian National AIDS Program 1995 Epidemiological Surveillance Activity - Year 1995 Cambodian National AIDS Program, unpublished tables.

Cambodian National Centre HIV/AIDS Program 2000 Executive Summary of HSS 1999 in Cambodia Cambodian National Centre HIV/AIDS, Dermatology and STD, Ministry of Health, 10 May, unpublished report and tables.

Cambodia National AIDS Program 1997 HIV Seroprevalence Sentinel Surveillance, Cambodia 1997 Cambodia National AIDS Program, tables.

Cambodia National Centre HIV/AIDS Program 2000 Report on HIV Sentinel Surveillance in Cambodia Cambodian National Centre HIV/AIDS, Dermatology and STD, Ministry of Health, report.

Cambodia National Centre HIV/AIDS Program 2002 HIV Sentinel Surveillance 2002 Cambodian National Centre HIV/AIDS, Dermatology and STD, Ministry of Health, report.

Heng, S., P. M. Gorbach, S. Gloyd, et al. 2001 HIV/STI Behavioural Risk among Rural Sex Workers in Cambodia 6th International Congress on AIDS in Asia and the Pacific, Melbourne, Australia, 10/5-10, Poster Mo0635.

Meng, C. Y., T. Phalla, K. S. Vuthy 1997 HIV/AIDS in Cambodia Presented at the UNAIDS Regional Workshop on "Evidence of Behavioural Change in the Context of HIV Decline in Thailand," 19 - 22 May, Bangkok, Thailand.

Sarda, R., G. Petersen, D. Gertig, et al. 1994 The Epidemiology of HIV/AIDS in the Western Pacific Region: An Opportunity for Prevention Tenth International Conference on AIDS, Yokohama, Japan, 8/7-12, Session 037C.

Samrith, C., S. Vonthanak, R. Detels, et al. 1998 Report of Sentinel Surveillance in Cambodia 1998 National Center for Dermatology, Venerology and HIV/AIDS Control, Ministry of Health, Cambodia, unpublished report.

Saman, M., L. Kruiy, P. Glaziou, et al. 2001 A Study to Assess the Acceptability of an Intervention to Prevent Mother-to-Child Transmission of HIV in Phnom Penh, Cambodia 6th International Congress on AIDS in Asia and the Pacific, Melbourne, Australia, 10/5-10, Poster.

World Health Organization, Western Pacific Region 1993 AIDS Surveillance Report Global Programme on AIDS, vol. 1, no. 1, July, p. 2.

World Health Organization 1996 HIV Sentinel Surveillance Activities Throughout the Region STD HIV AIDS Surveillance Report, vol. 7, pp. 3-4.

### **Websites:**

## Annex: HIV surveillance by site

Group	Area	1987	1988	1989	1990	1991	1992	1993	1994	1995	1996	1997	1998	1999	2000	2001	2002	2003		
Pregnant women	Major urban areas						0			3.03	3.23	0.81		4.89	2.67	3.56	3.45			
	Outside major urban areas									1.53	1.69	3.80		2.83	4.67		4.40			
		Banteay Meanchey, Banteay Meanchey									2.00	4.44	3.95		1.60	1.75		5.33		
		Battambang, Battambang Province										0.86	1.49		3.53	1.03		2.52		
		Kampong Cham, Kampong Cham Province										1.16	0.90		2.66	3.33		2.40		
		Kampong Chhnang, Kampong Chhnang Pr										1.43	2.00		1.51	4.00		3.21		
		Kampong Speu, Kampong Speu Province												3.23	2.00	0.67		2.33		
		Kampong Thom, Kampong Thom Province										1.92	2.18		1.57	0.98		1.60		
		Kampot, Kampot Province										3.00	2.88		3.00	2.67		0.81		
		Kandal, Kandal Province											0.87							
		Kep, Kep Province											5.26	19.51		8.00	5.03		3.32	
		Koh Kong, Koh Kong Province										0.29	10.00		0	0.79		2.63		
		Kratie, Kratie Province											0.47							
		Mondul Kiri, Mondul Kiri Province													3.31	0.55		5.87		
		Pailin, Pailin Province														0.55		1.16		
		Preah Vihear, Preah Vihear Province														1.33	4.78		1.80	
		Prey Veng, Prey Veng Province									2.22	2.30	4.30		1.98	2.75		1.60		
		Pursat, Pursat Province										6.19	2.49		1.09	1.29		4.26		
		Rattanakiri, Rattanakiri Province									4.02	1.61	4.41		4.67	5.67		4.20		
		Siem Reap, Siem Reap Province									4.44	2.11	2.88		3.00	3.89		3.60		
	Sihanoukville, Sihanoukville Provin										0.76	3.49		1.23	1.11		2.22			
	Stung Treng, Stung Treng Province										0.92	0.90		2.58	1.25		1.67			
	Svay Rieng, Svay Rieng Province										0.92	3.47		0.67	4.14					
Sex workers	Major urban areas						9.18			30.47	41.62	44.44	61.33	47.40	26.32		18.52			
	Outside major urban areas									45.75	54.49	58.08	53.96	50.68	37.33		37.43			
		Banteay Meanchey, Banteay Meanchey								48.00	58.33	47.06	53.33	35.40	29.93		10.06			
		Battambang, Battambang Province									27.27		28.00	28.03	29.33		23.31			
		Kampong Cham, Kampong Cham Province									38.79	43.85	39.33	42.31	42.86	46.50		36.76		
		Kampong Chhnang, Kampong Chhnang Pr									50.43		47.06	30.21	36.75		32.77			
		Kampong Speu, Kampong Speu Province											20.59	32.63	29.49	28.05		20.24		
		Kampong Thom, Kampong Thom Province										41.56		61.19	51.79	42.11		33.96		
		Kampot, Kampot Province									13.64	13.33	19.13	21.36	31.73	25.64		23.00		
		Kandal, Kandal Province									39.16	52.10	52.00	41.04	41.72	53.57		50.89		
		Koh Kong, Koh Kong Province										28.57		25.00	22.55	32.10		24.44		
		Kratie, Kratie Province																		
		Not specified					0	15.00												
		Pailin, Pailin Province														37.90		30.28		

Group	Area	1987	1988	1989	1990	1991	1992	1993	1994	1995	1996	1997	1998	1999	2000	2001	2002	2003		
Sex workers	Outside major urban areas	Preah Vihear, Preah Vihear Province																30.00		
		Prey Veng, Prey Veng Province									29.67		29.33	7.33	17.45			17.22		
		Pursat, Pursat Province									44.19	49.51		64.12	52.00	58.57			63.38	
		Several provinces								38.83										
		Siem Reap, Siem Reap Province									35.09	49.00		38.00	18.00	28.67			36.88	
		Sihanoukville, Sihanoukville Provin									37.74	51.52		57.33	42.00	22.00			26.35	
		Stung Treng, Stung Treng Province											16.67	22.64	33.33	29.09	38.00			29.23
		Svay Rieng, Svay Rieng Province											36.23	23.86	25.00	26.09	7.14			35.62
Takeo, Takeo Province											24.64	24.14	41.41	32.53	11.46					
Injecting drug users																				
STI patients	Major urban areas						4.47	13.50	8.50											
	Outside major urban areas						4.17													
Men having sex with men																				
Tuberculosis patients	Major urban areas									11.25	11.46	15.38		14.00	16.67			16.00		
	Outside major urban areas	Banteay Meanchey, Banteay Meanchey									0	2.98			12.08	13.33			15.57	
		Battambang, Battambang Province								3.45	5.13	16.00			11.67	19.46			20.98	
		Kampong Cham, Kampong Cham Province										3.39	1.96			7.26	4.64		12.24	
		Kampong Chhnang, Kampong Chhnang Pr											1.72	2.00		4.03	1.00		4.06	
		Kampong Speu, Kampong Speu Province											2.86	0		2.22	5.17		4.23	
		Kampong Thom, Kampong Thom Province											1.30	2.63		9.00	0.83		1.43	
		Kampot, Kampot Province											6.00			13.86	4.67		2.68	
		Kandal, Kandal Province												2.78	1.60		8.61	6.04		5.73
		Kratie, Kratie Province												28.00			12.50	3.85		9.38
		Prey Veng, Prey Veng Province											0	5.05		3.00	0.66			4.08
		Pursat, Pursat Province													14.00		14.10	12.63		10.17
		Siem Reap, Siem Reap Province										0.50	1.54	5.00		9.00	2.67			4.67
		Sihanoukville, Sihanoukville Provin															10.53			24.44
Svay Rieng, Svay Rieng Province											0	2.63		3.50	4.92			5.24		
Takeo, Takeo Province											2.99	2.50		4.32	5.00					